



INDIAN HILLS VACANT LOT



A vacant residential lot in an established neighborhood.

TOM MOSS

Farm Manager/Sales Associate

Tom's Cell: 308-660-9302

Email: tom@lashleyland.com

PROPERTY HIGHLIGHTS

List Price	\$27,000
Location	North Platte, NE 69101
Legal Description	INDIAN HILLS 2ND SUB. 9 3 (.83 A.) Lincoln County, NE
Acres	.83±

Buyers and Sellers acknowledge all represented acres are based on the County Assessor's records. Buyers acknowledge that they are purchasing a legal description, and acknowledge that fences may or may not be on the property lines.

Taxes - Estimated **\$107.78**

Property Summary

Rare building opportunity in North Platte's sought-after Indian Hills area! This vacant residential lot offers the chance to build exactly what you've envisioned in an established neighborhood where available lots are increasingly hard to find.

Surrounded by quality homes, this property combines the benefits of an established neighborhood with the freedom of new construction. Whether you're ready to build now or secure a lot for future plans, this property provides the location and potential to make your vision a reality.

Build your future in Indian Hills and enjoy the value and community that have made this subdivision one of North Platte's standout residential destinations.

For more information, contact the listing agent, Tom Moss, at 308-660-9302.

All information herein is from sources deemed reliable, however the accuracy is not guaranteed by Lashley Land and Recreational Brokers, Inc., seller or agent. Offering is subject to error, omissions, prior sale, price change or withdrawal without notice.

TOM MOSS

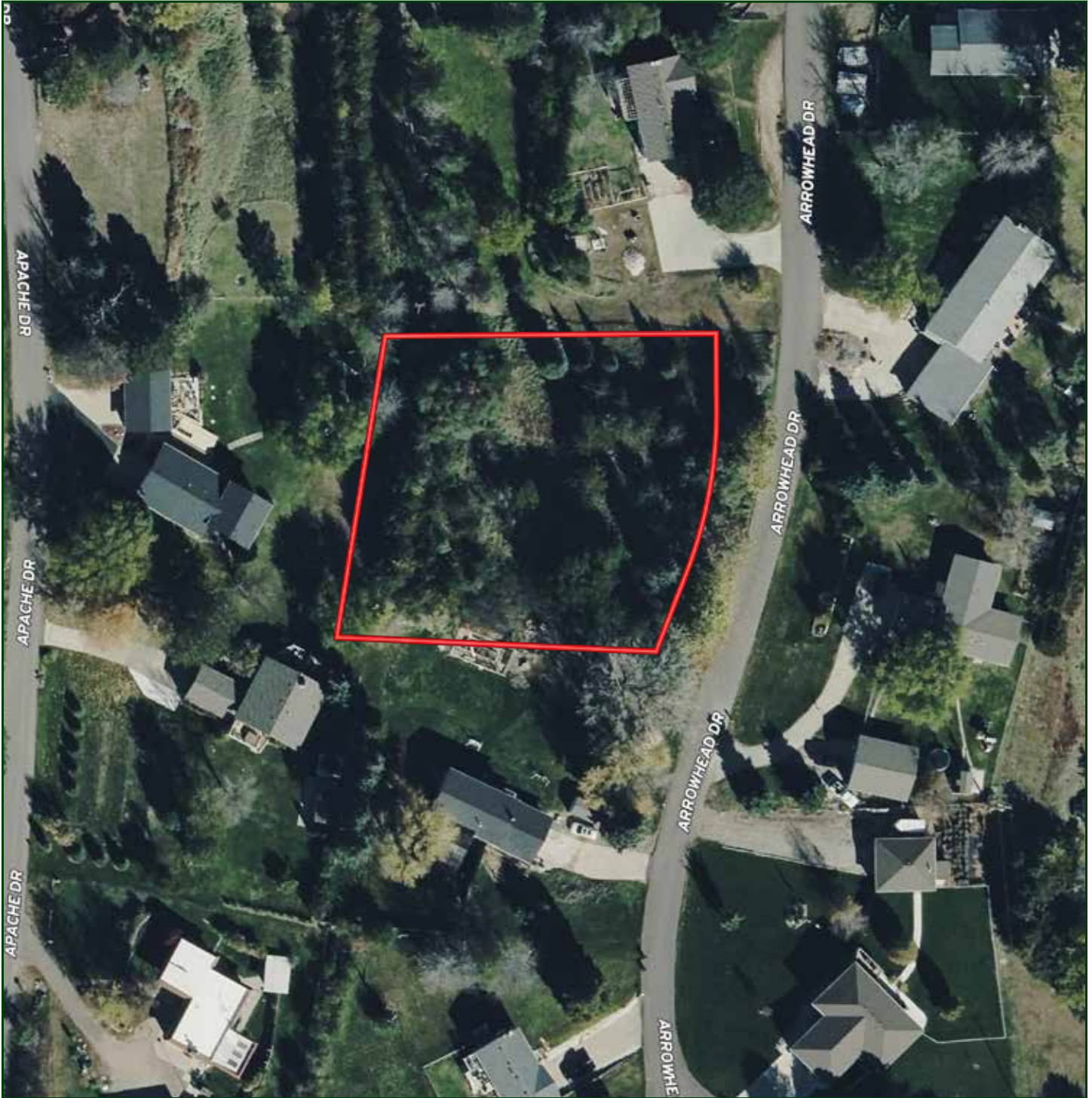
Farm Manager/Sales Associate
Cell Phone: 308-660-9302
Email: Tom@lashleyland.com

LOCATION MAP



Boundary lines are estimates - Map for illustration only

AERIAL MAP



Boundary lines are estimates - Map for illustration only

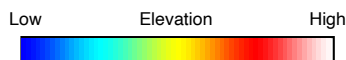
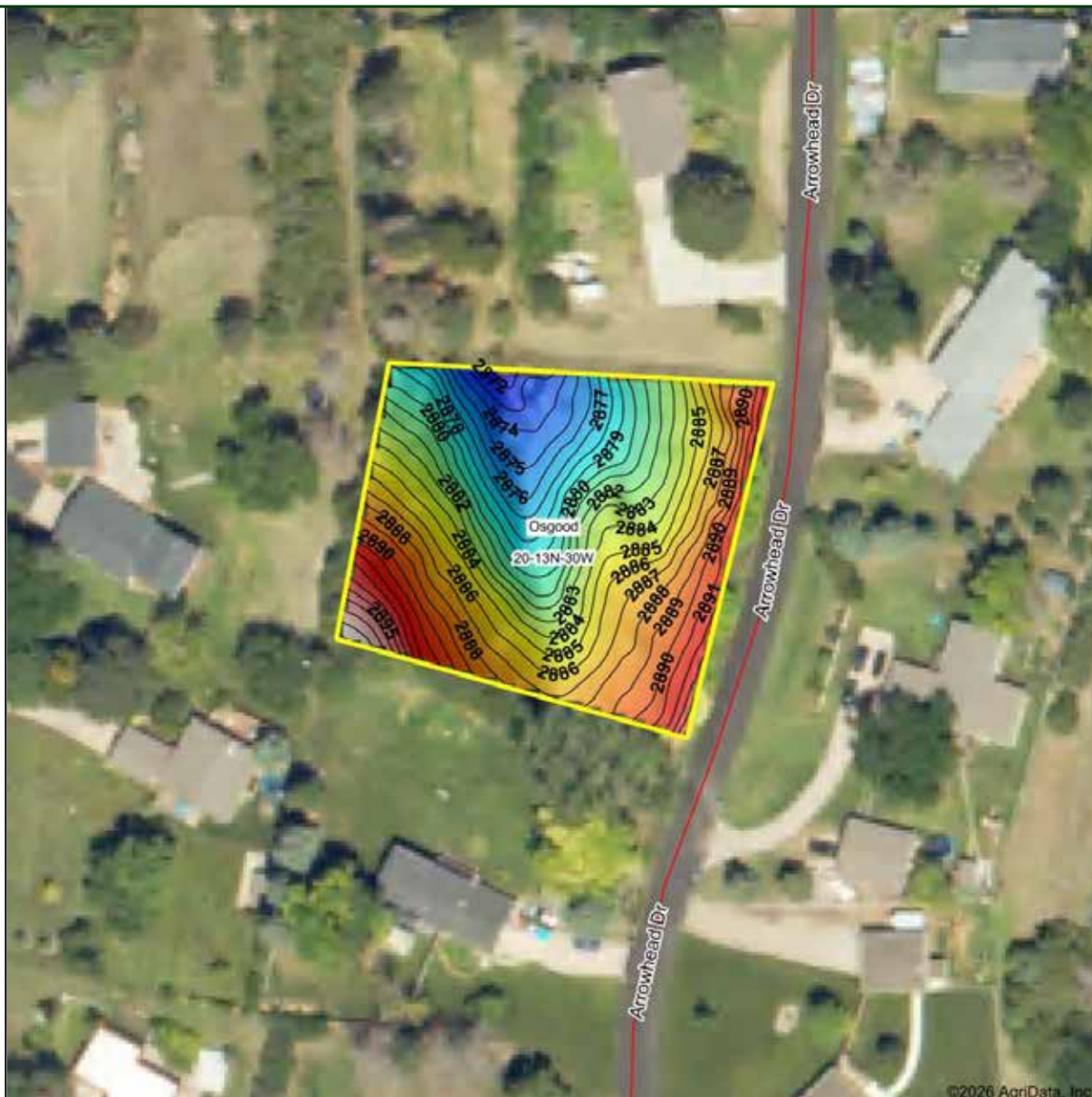
TOM MOSS

Farm Manager/Sales Associate

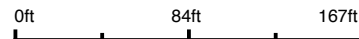
Cell Phone: 308-660-9302

Email: Tom@lashleyland.com

TOPO MAP



Source: USGS 1 meter dem
 Interval(ft): 1
 Min: 2,871.5
 Max: 2,898.9
 Range: 27.4
 Average: 2,884.2
 Standard Deviation: 5.41 ft



5/30/2026

20-13N-30W
Lincoln County
Nebraska

Boundary Center: 41° 4' 56.81, -100° 47' 6.32

Boundary lines are estimates - Map for illustration only

PROPERTY IMAGES



TOM MOSS

Farm Manager/Sales Associate

Cell Phone: 308-660-9302

Email: Tom@lashleyland.com

PROPERTY IMAGES





NEBRASKA EXPERTS, NATIONAL EXPOSURE.

Contact Information

Office: 308-532-9300

Fax: 308-532-1854

Email: info@lashleyland.com

Website: LashleyLand.com

Mike Lashley, Owner|Broker

Amy Lashley-Johnston, Scott Saults, Skip Marland, Jordan Maassen, April Good, Jon Farley, Tami Timmerman-Lashley, Randy Helms, Bill Grant, Shane Mauch, Jake McQuillen, Brandi Housman, Leala Jimerson, Stephanie Miller, DeAnn Vaughn, Ann Gray, Jake Hopwood, Bryan Cabrera, Lindsey Feuerborn, Robby Uehran, Tom Moss, and Carissa Guy

Like us on Facebook
[Facebook.com/LashleyLand](https://www.facebook.com/LashleyLand)

2218 E. Walker Road • North Platte, NE 69101

TOM MOSS

Farm Manager/Sales Associate

Tom's Cell: 308-660-9302

Email: tom@lashleyland.com