

40 WHISPERING PINES



A vacant lot perfect for a new home and close to Chadron State Park.

LEALA JIMERSON

Sales Associate

Leala's Cell: 308-615-9065

Email: leala@lashleyland.com

PROPERTY HIGHLIGHTS

List Price	\$55,071
Location	40 Whispering Pines, Chadron, NE
Legal Description	6 31 48 LOT: 39 AND 40 ADDITION: WHISPERING PINES

Acres .85±

Buyers and Sellers acknowledge all represented acres are based on the County Assessor's records.
Buyers acknowledge that they are purchasing a legal description, and acknowledge that fences may or may not be on the property lines.

Taxes - Estimated **206.54**

Property Summary

Great build site near Chadron State Park on .85 acres. The property has a 24' x 20' shop with a solar panel on the shop for electricity. There is also electricity power pole on the property!

Outbuildings

24'x20'x8' shop

All information herein is from sources deemed reliable, however the accuracy is not guaranteed by Lashley Land and Recreational Brokers, Inc., seller or agent. Offering is subject to error, omissions, prior sale, price change or withdrawal without notice.

LEALA JIMERSON

Sales Associate

Leala's Cell: 308-615-9065

Email: leala@lashleyland.com

LOCATION MAP



Boundary lines are estimates - Map for illustration only

AERIAL MAP



Boundary lines are estimates - Map for illustration only

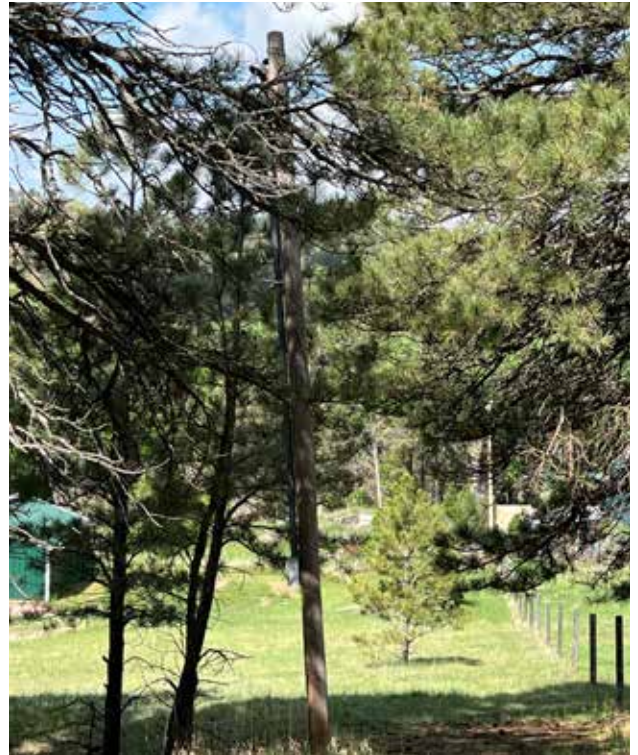
LEALA JIMERSON

Sales Associate

Leala's Cell: 308-615-9065

Email: leala@lashleyland.com

PROPERTY IMAGES



PROPERTY IMAGES



LEALA JIMERSON
Sales Associate
Leala's Cell: 308-615-9065
Email: leala@lashleyland.com

PROPERTY IMAGES





NEBRASKA EXPERTS, NATIONAL EXPOSURE.

Contact Information

Office: 308-532-9300

Fax: 308-532-1854

Email: info@lashleyland.com

Website: LashleyLand.com

Mike Lashley, Owner | Broker

Amy Lashley-Johnston, Scott Saults, Skip Marland, Jordan Maassen, April Good, Jon Farley, Tami Timmerman-Lashley, Randy Helms, Bill Grant, Shane Mauch, Jake McQuillen, Brandi Housman, Leala Jimerson, Stephanie Miller, DeAnn Vaughn, Ann Gray, Jake Hopwood, Bryan Cabrera, Lindsey Feuerborn, Robby Uehran, Tom Moss, and Carissa Guy

Like us on Facebook
[Facebook.com/LashleyLand](https://www.facebook.com/LashleyLand)

2218 E. Walker Road • North Platte, NE 69101



LEALA JIMERSON

Sales Associate

Leala's Cell: 308-615-9065

Email: leala@lashleyland.com