



**1005 GRANDE AVE.
NORTH PLATTE, NE**



An updated 3 bedroom ranch-style home.

SHANE MAUCH

Sales Associate

Shane's Cell: 308-660-5672

Email: shane@lashleyland.com

PROPERTY HIGHLIGHTS

List Price	\$239,000
Location	1005 Grande Ave., North Platte, Nebraska
Legal Description	SUN VALLEY ADD. 2 2

Acres .21±

Buyers and Sellers acknowledge all represented acres are based on the County Assessor's records. Buyers acknowledge that they are purchasing a legal description, and acknowledge that fences may or may not be on the property lines.

Taxes - Estimated **\$2,264.98**

Property Summary

Modernized Ranch-Style Home in the Heart of North Platte

Don't miss this beautifully updated ranch-style home conveniently located near schools, the recreation center, shopping, and grocery stores!

This well-maintained 1,175-square-foot home offers 3 bedrooms, 1.5 bathrooms, and an open-concept living and dining area designed for comfortable everyday living. With extensive recent updates and meticulous care throughout the years, this home is truly move-in ready.

Recent Upgrades Include:

Spring 2024
New windows
New carpet and flooring
New countertops
New appliances
New ceiling fans

All information herein is from sources deemed reliable, however the accuracy is not guaranteed by Lashley Land and Recreational Brokers, Inc., seller or agent. Offering is subject to error, omissions, prior sale, price change or withdrawal without notice.

SHANE MAUCH

Sales Associate

Shane's Cell: 308-660-5672

Email: shane@lashleyland.com

PROPERTY HIGHLIGHTS

New kitchen sink and faucet
New garbage disposal
New toilets
New bathroom sinks and faucets
New mirrors, light fixtures, and accessories in both bathrooms
New water softener

Spring 2026

New backflow preventer
Fresh exterior limewash trim paint
Newly painted front porch
New exterior light fixtures

Additional highlights:

Lawn professionally treated four times annually by Jorgensons Lawn Care.

Pride of ownership is evident throughout!

Clean, updated, and exceptionally well-cared for!

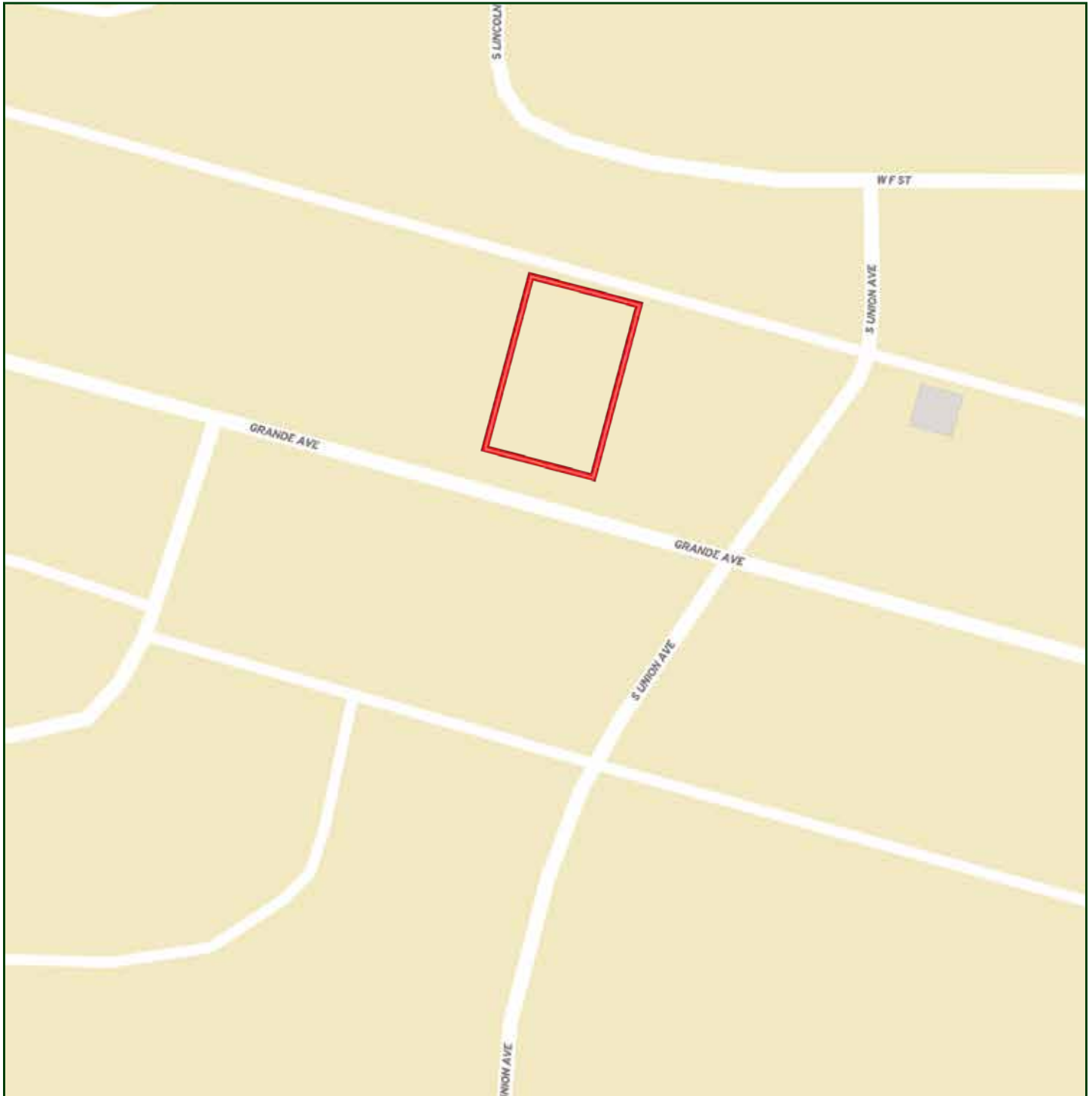
This home is a rare opportunity to own a beautifully updated property in a desirable North Platte location.

Closing must occur on or after July 20.

Contact me today to schedule your private showing!



LOCATION MAP



Boundary lines are estimates - Map for illustration only

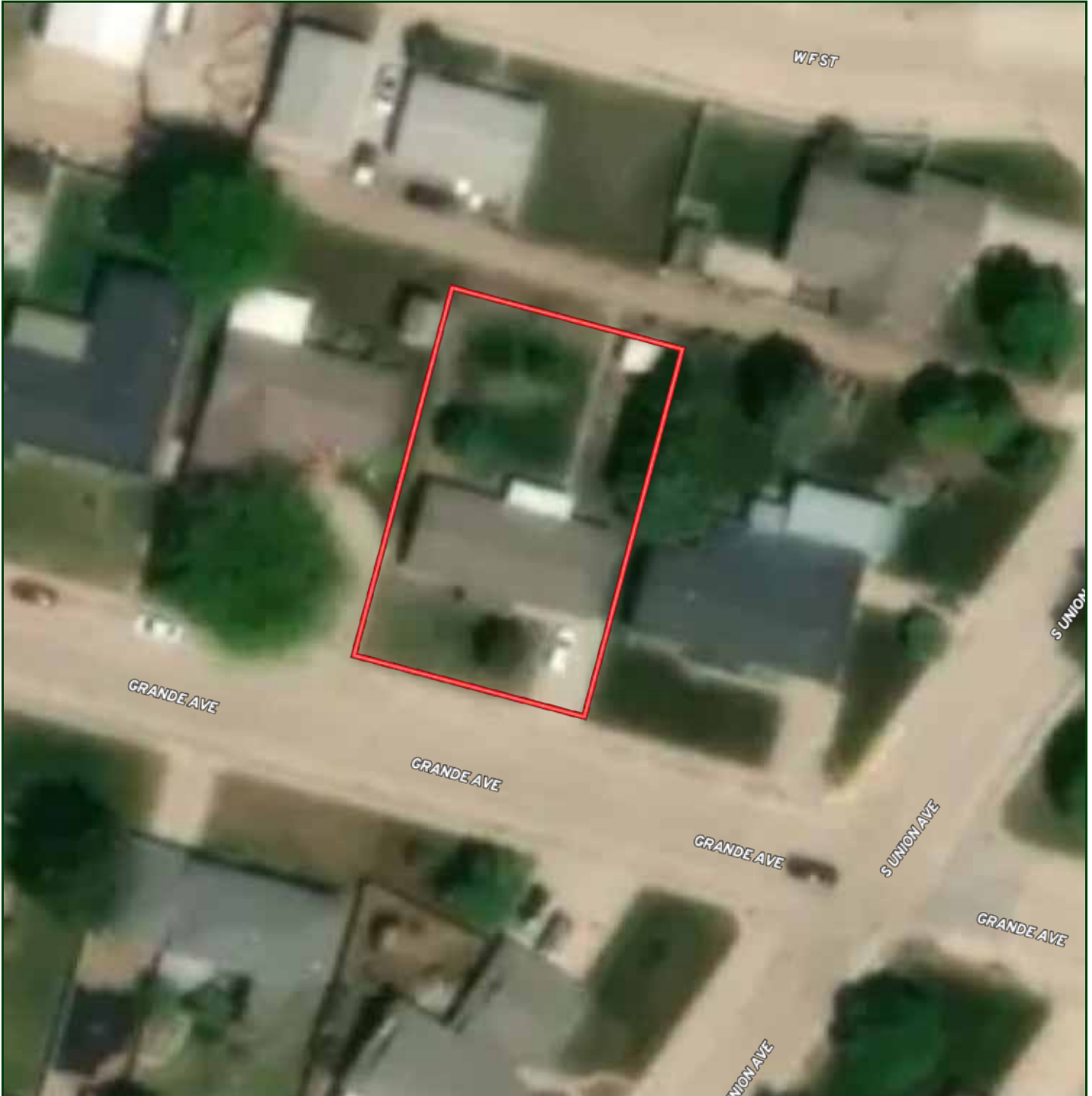
SHANE MAUCH

Sales Associate

Shane's Cell: 308-660-5672

Email: shane@lashleyland.com

AERIAL MAP



Boundary lines are estimates - Map for illustration only

PROPERTY IMAGES



SHANE MAUCH

Sales Associate

Shane's Cell: 308-660-5672

Email: shane@lashleyland.com

PROPERTY IMAGES





NEBRASKA EXPERTS, NATIONAL EXPOSURE.

Contact Information

Office: 308-532-9300

Fax: 308-532-1854

Email: info@lashleyland.com

Website: LashleyLand.com

Mike Lashley, Owner | Broker

Amy Lashley-Johnston, Scott Saults, Skip Marland, Jordan Maassen, April Good, Jon Farley, Tami Timmerman-Lashley, Randy Helms, Bill Grant, Shane Mauch, Jake McQuillen, Brandi Housman, Leala Jimerson, Stephanie Miller, DeAnn Vaughn, Ann Gray, Jake Hopwood, Bryan Cabrera, Lindsey Feuerborn, Robby Uehran, Tom Moss, and Carissa Guy

Like us on Facebook
[Facebook.com/LashleyLand](https://www.facebook.com/LashleyLand)

2218 E. Walker Road • North Platte, NE 69101



SHANE MAUCH

Sales Associate

Shane's Cell: 308-660-5672

Email: shane@lashleyland.com