

520 BIRDIE LN. • North Platte, Nebraska

LASHLEY 
LAND RESIDENTIAL

\$750,000

Summary: Charming Lake Maloney Retreat

Discover your dream home in this stunning 2-bedroom, 3-full-bath property, boasting 2368 square feet of living space. Located just steps from Lake Maloney Golf Course and offering full lake access across the street, this unique retreat features a private pond with a beach area, perfect for relaxation and outdoor activities like paddle boarding, kayaking, and fishing right off the bank. The interior has been thoughtfully updated, showcasing a new creative interiors kitchen complete with a kitchen island featuring beautiful stone surfaces and modern cabinetry. Additionally, there is a secondary kitchen area on the main level for added convenience. The gorgeous primary bedroom suite is a highlight, offering a luxurious double shower with exquisite floor-to-ceiling tile work. The second bedroom includes a spacious loft that can accommodate two queen mattresses or serve as a cozy child's getaway or storage area, with easy potential to reconfigure the bedroom layout. A beautiful stone fireplace adds warmth and ambiance to the living space. With exceptional potential, and a little imagination you could add a third bedroom to the main floor complete with its own full bath. The new garage doors add to the curb appeal of the home. An adorable tiny home adjacent to the pond provides an ideal mother-in-law suite or guest house, complete with its own private restroom. Stunning views abound throughout the home, from the elevated deck to the serene surroundings by the pond. Enjoy a large garden area while savoring the seclusion this property offers. Embrace the lifestyle that comes with lakeside living! This home won't last long! Call for your private tour today! All information is taken from the Lincoln County assessor card and it is no way a warranty or a guarantee.

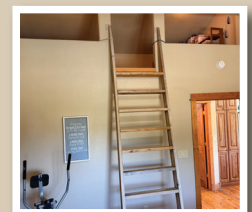
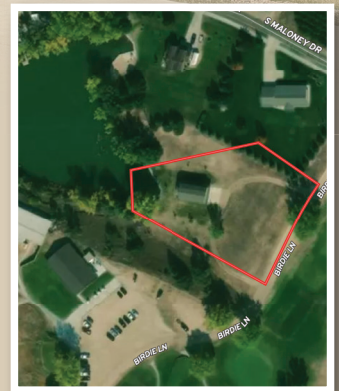
Taxes: \$2,184.26

Bedrooms: 2

Bathrooms: 3

Square Feet: 2,368

Year Built: 2010



Tami Timmerman-Lashley • 308-660-9468 • tami@lashleyland.com

LashleyLand.com



All information herein is from sources deemed reliable, however the accuracy is not guaranteed by Lashley Land and Recreational Brokers, Inc., seller or agent. Offering is subject to error, omissions, prior sale, price change or withdrawal without notice. Buyers and Sellers acknowledge all represented acres are based on the County Assessor's records. Buyers acknowledge that they are purchasing a legal description, and acknowledge that fences may or may not be on the property lines.