



**520 BIRDIE LN.  
NORTH PLATTE, NE**



*A charming Lake Maloney retreat*

**TAMI TIMMERMAN-LASHLEY**

Residential Specialist

Tami's Cell: 308-660-9468

Email: [tami@lashleyland.com](mailto:tami@lashleyland.com)

# PROPERTY HIGHLIGHTS

**List Price** **\$750,000**

**Location** 520 Birdie Lane, North Platte, NE 69101

## Legal Description

LOT 150B IN THE SUBDIVISION OF LOT 150, LAKE MALONEY, LINCOLN COUNTY, NEBRASKA.

**Taxes - Estimated** **\$2,184.26**

## Property Summary

Charming Lake Maloney Retreat

Discover your dream home in this stunning 2-bedroom, 3-full-bath property, boasting 2368 square feet of living space. Located just steps from Lake Maloney Golf Course and offering full lake access across the street, this unique retreat features a private pond with a beach area, perfect for relaxation and outdoor activities like paddle boarding, kayaking, and fishing right off the bank.

The interior has been thoughtfully updated, showcasing a new creative interiors kitchen complete with a kitchen island featuring beautiful stone surfaces and modern cabinetry. Additionally, there is a secondary kitchen area on the main level for added convenience. The gorgeous primary bedroom suite is a highlight, offering a luxurious double shower with exquisite floor-to-ceiling tile work. The second bedroom includes a spacious loft that can accommodate two queen mattresses or serve as a cozy child's getaway or storage area, with easy potential to reconfigure the bedroom layout.

A beautiful stone fireplace adds warmth and ambiance to the living space. With exceptional potential, and a little imagination you could add a third bedroom to the main floor complete with its own full bath. The new garage doors add to the curb appeal of the home.

An adorable tiny home adjacent to the pond provides an ideal mother-in-law suite or guest house, complete with its own private restroom. Stunning views abound throughout the home, from the elevated deck to the serene surroundings by the pond.

Enjoy a large garden area while savoring the seclusion this property offers. Embrace the lifestyle that comes with lakeside living! This home won't last long! Call for your private tour today!

All information is taken from the Lincoln County assessor card and it is no way a warranty or a guarantee.

All information herein is from sources deemed reliable, however the accuracy is not guaranteed by Lashley Land and Recreational Brokers, Inc., seller or agent. Offering is subject to error, omissions, prior sale, price change or withdrawal without notice.

**TAMI TIMMERMAN-LASHLEY**

Residential Specialist

Tami's Cell: 308-660-9468

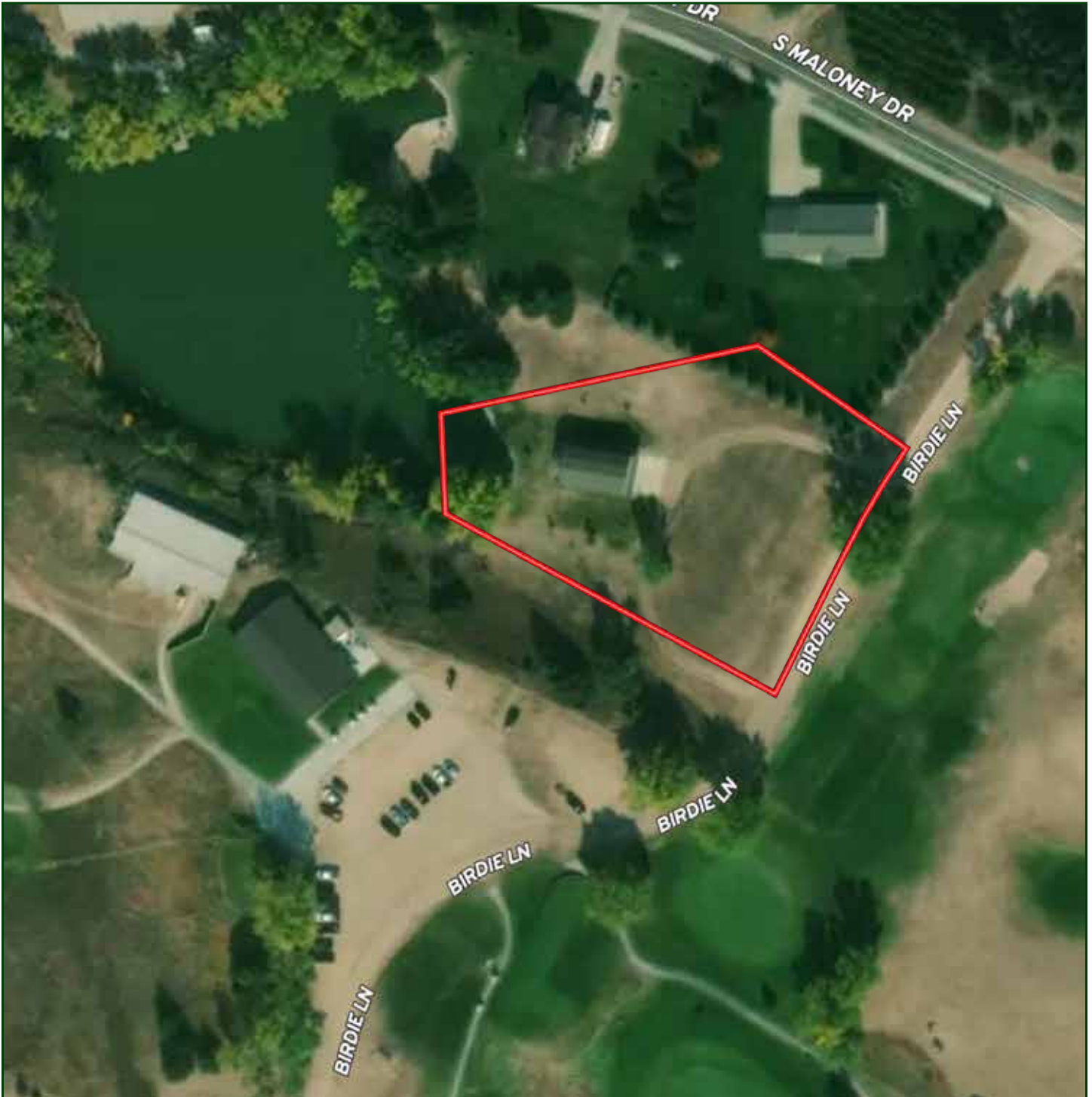
Email: tami@lashleyland.com

# LOCATION MAP



Boundary lines are estimates - Map for illustration only

# AERIAL MAP



Boundary lines are estimates - Map for illustration only

**TAMI TIMMERMAN-LASHLEY**

Residential Specialist

Tami's Cell: 308-660-9468

Email: [tami@lashleyland.com](mailto:tami@lashleyland.com)

# PROPERTY IMAGES



# PROPERTY IMAGES



**TAMI TIMMERMAN-LASHLEY**

Residential Specialist

Tami's Cell: 308-660-9468

Email: [tami@lashleyland.com](mailto:tami@lashleyland.com)

# PROPERTY IMAGES





## NEBRASKA EXPERTS, NATIONAL EXPOSURE.

### Contact Information

Office: 308-532-9300

Fax: 308-532-1854

Email: [info@lashleyland.com](mailto:info@lashleyland.com)

Website: [LashleyLand.com](http://LashleyLand.com)

### Mike Lashley, Owner | Broker

Amy Lashley-Johnston, Scott Saults, Skip Marland, Jordan Maassen, April Good, Jon Farley, Tami Timmerman-Lashley, Randy Helms, Bill Grant, Shane Mauch, Jake McQuillen, Brandi Housman, Leala Jimerson, Stephanie Miller, DeAnn Vaughn, Ann Gray, Jake Hopwood, Bryan Cabrera, Lindsey Feuerborn, Robby Uehran, and Tom Moss

Like us on Facebook  
[Facebook.com/LashleyLand](https://www.facebook.com/LashleyLand)

2218 E. Walker Road • North Platte, NE 69101



## TAMI TIMMERMAN-LASHLEY

Residential Specialist

Tami's Cell: 308-660-9468

Email: [tami@lashleyland.com](mailto:tami@lashleyland.com)