



**1611 AVENUE C  
GOTHENBURG, NE**



A 4 bedroom home with an enclosed sunroom.

**BRANDI HOUSMAN**

Sales Associate

Brandi's Cell: 308-568-9435

Email: [brandi@lashleyland.com](mailto:brandi@lashleyland.com)

# PROPERTY HIGHLIGHTS

<b>List Price</b>	<b>\$200,000</b>
<b>Location</b>	1611 Avenue C., Gothenburg, NE 69138
<b>Taxes - Estimated</b>	<b>\$2,019.36</b>

## Property Summary

WELCOME HOME to this adorable 4 bedroom, 2 bathroom home featuring 1,760 sq ft. From the front patio, you enter the home into an enclosed sunroom area perfect for plants, playroom or area for your furry friends. From the sunroom, enter into the large combined living and dining area, then into the primary with ensuite featuring a clawfoot tub, there is an additional bedroom perfect for an office area and then you enter into the kitchen with a large entertaining island with additional seating space. Downstairs you have an open area that can be used as a second living space, playroom or workout space. There are 2 additional rooms downstairs as well as a bathroom with a walk in shower and a laundry/mechanical room. There is a detached garage with a long driveway for additional parking space on the north side of the home. Entering into the backyard, there is a tall covered back patio area as well as a fully fenced in yard. The backyard also features a shed with an attached enclosed outdoor pet run. Come see this adorable home and imagine how you will set it up to be your next home!

All information herein is from sources deemed reliable, however the accuracy is not guaranteed by Lashley Land and Recreational Brokers, Inc., seller or agent. Offering is subject to error, omissions, prior sale, price change or withdrawal without notice.

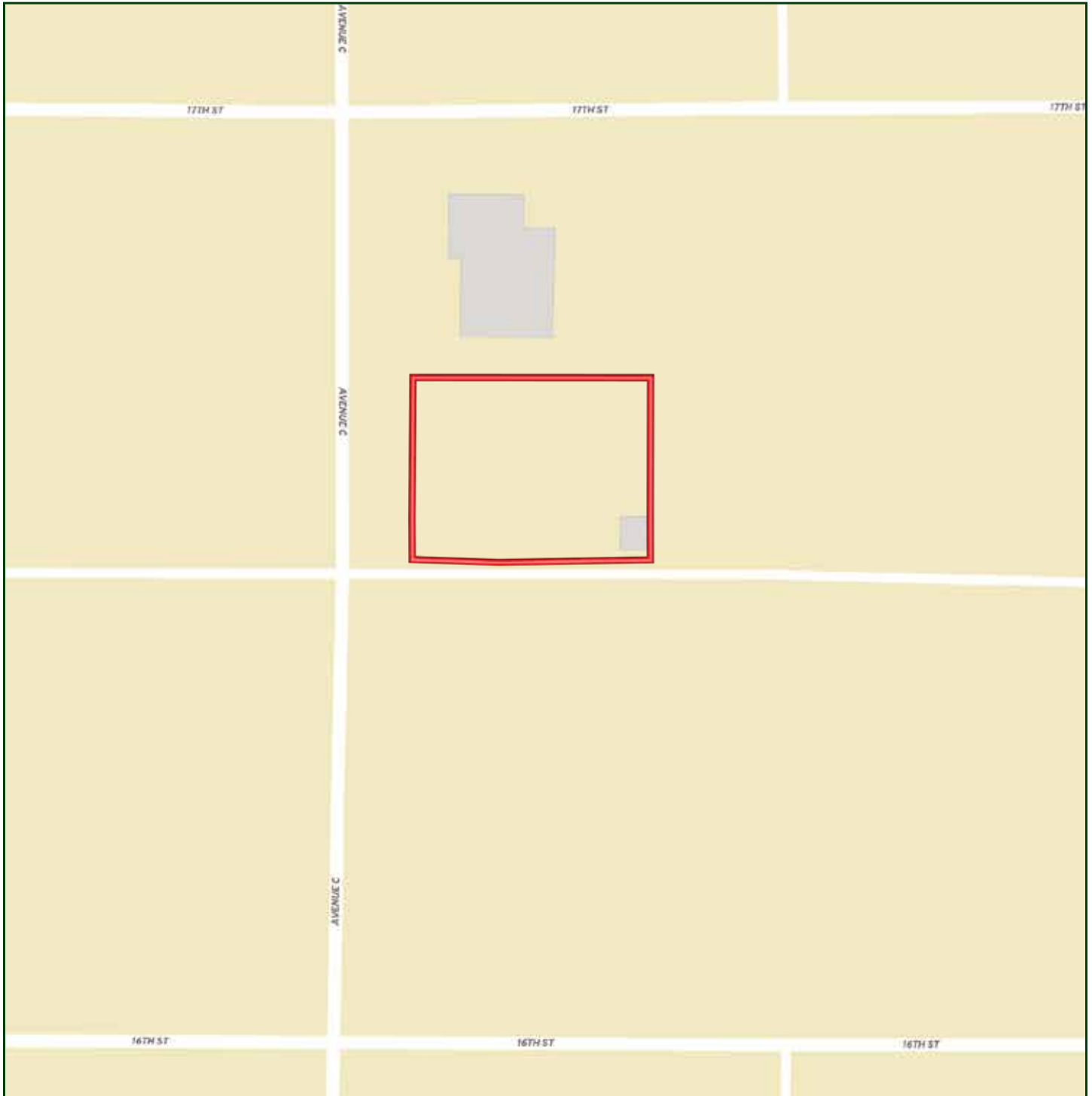
**BRANDI HOUSMAN**

Sales Associate

Brandi's Cell: 308-568-9435

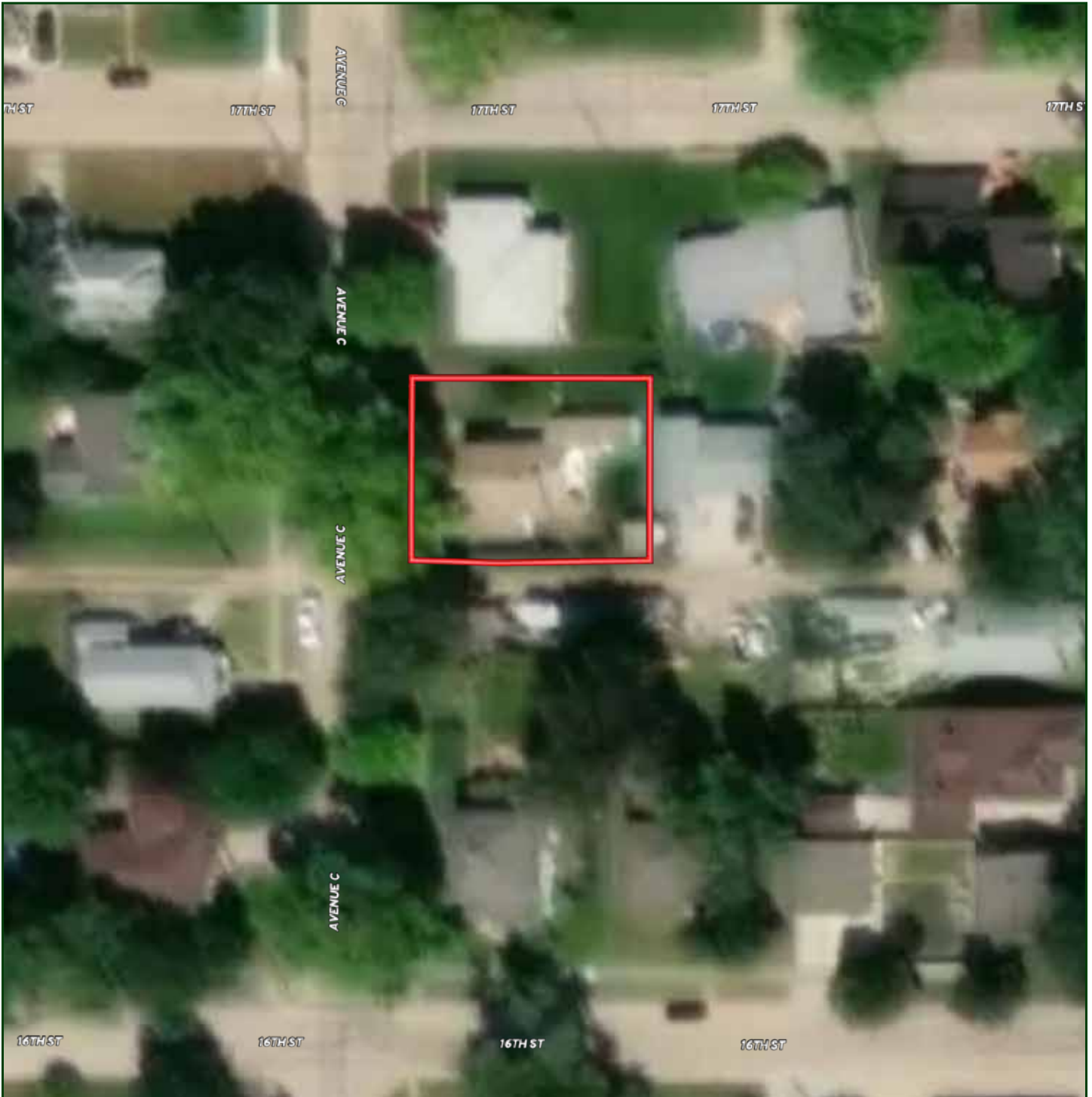
Email: brandi@lashleyland.com

# LOCATION MAP



**Boundary lines are estimates - Map for illustration only**

# AERIAL MAP



Boundary lines are estimates - Map for illustration only

**BRANDI HOUSMAN**

Sales Associate

Brandi's Cell: 308-568-9435

Email: brandi@lashleyland.com

# PROPERTY IMAGES



# PROPERTY IMAGES



**BRANDI HOUSMAN**

Sales Associate

Brandi's Cell: 308-568-9435

Email: brandi@lashleyland.com

# PROPERTY IMAGES





## NEBRASKA EXPERTS, NATIONAL EXPOSURE.

### Contact Information

Office: 308-532-9300

Fax: 308-532-1854

Email: [info@lashleyland.com](mailto:info@lashleyland.com)

Website: [LashleyLand.com](http://LashleyLand.com)

### Mike Lashley, Owner|Broker

Amy Lashley-Johnston, Scott Saults, Skip Marland, Jordan Maassen, April Good, Jon Farley, Tami Timmerman-Lashley, Randy Helms, Bill Grant, Shane Mauch, Jake McQuillen, Brandi Housman, Leala Jimerson, Stephanie Miller, DeAnn Vaughn, Ann Gray, Jake Hopwood, Bryan Cabrera, Lindsey Feuerborn, Robby Uehran, and Tom Moss

Like us on Facebook

[Facebook.com/LashleyLand](https://www.facebook.com/LashleyLand)

2218 E. Walker Road • North Platte, NE 69101



## BRANDI HOUSMAN

Sales Associate

Brandi's Cell: 308-568-9435

Email: [brandi@lashleyland.com](mailto:brandi@lashleyland.com)