



GARDEN COUNTY PASTURE



813± acres of quality pasture land Northeast of Oshkosh, NE.

SCOTT SAULTS

Associate Broker

Scott's Cell: 308-289-1383

Email: scott@lashleyland.com

PROPERTY HIGHLIGHTS

List Price **\$1,100,000**

Location 18531 Road 72, Oshkosh, NE

Legal Description

W1/2-W1/2SE1/4 Section 28 & N1/2-E1/2SE1/4 Section 29 18-43 West of the 6th P.M. Garden County Nebraska

Acres **813.83±**

Buyers and Sellers acknowledge all represented acres are based on the County Assessor's records. Buyers acknowledge that they are purchasing a legal description, and acknowledge that fences may or may not be on the property lines.

Taxes - Estimated **\$2,865.86**

Property Summary

This is high quality pasture land for sale in Garden County, Nebraska. This property has great county road access with an older home and outbuildings, and could be a great place for a ranching headquarters. The home has 3 bedrooms with 1 bathroom and 1,152 sqft. The shop is 32x60. There are a total of 813.83± acres, and the property is fenced into three pastures and has two wells. Call Scott Saults for any questions or to schedule a showing.

All information herein is from sources deemed reliable, however the accuracy is not guaranteed by Lashley Land and Recreational Brokers, Inc., seller or agent. Offering is subject to error, omissions, prior sale, price change or withdrawal without notice.

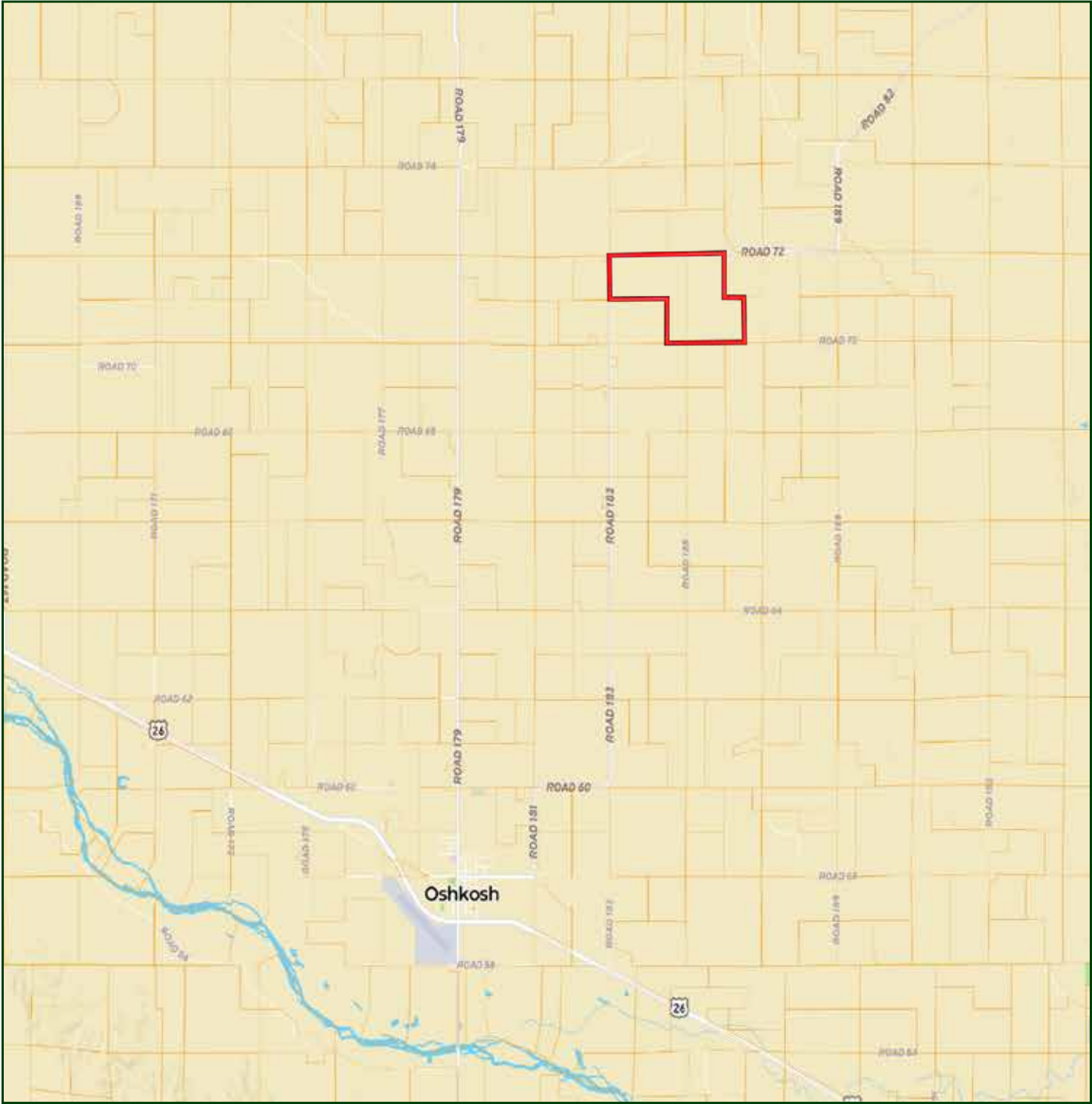
SCOTT SAULTS

Associate Broker

Scott's Cell: 308-289-1383

Email: scott@lashleyland.com

LOCATION MAP



Boundary lines are estimates - Map for illustration only

AERIAL MAP



Boundary lines are estimates - Map for illustration only

SCOTT SAULTS

Associate Broker

Scott's Cell: 308-289-1383

Email: scott@lashleyland.com

PROPERTY IMAGES



SCOTT SAULTS
Associate Broker
Scott's Cell: 308-289-1383
Email: scott@lashleyland.com

PROPERTY IMAGES





NEBRASKA EXPERTS, NATIONAL EXPOSURE.

Contact Information

Office: 308-532-9300

Fax: 308-532-1854

Email: info@lashleyland.com

Website: LashleyLand.com

Mike Lashley, Owner | Broker

Amy Lashley-Johnston, Scott Saults, Skip Marland, Jordan Maassen, April Good, Jon Farley, Tami Timmerman-Lashley, Randy Helms, Bill Grant, Shane Mauch, Jake McQuillen, Brandi Housman, Leala Jimerson, Stephanie Miller, DeAnn Vaughn, Ann Gray, Jake Hopwood, Bryan Cabrera, Lindsey Feuerborn, Robby Uehran, and Tom Moss

Like us on Facebook

[Facebook.com/LashleyLand](https://www.facebook.com/LashleyLand)

2218 E. Walker Road • North Platte, NE 69101

SCOTT SAULTS

Associate Broker

Scott's Cell: 308-289-1383

Email: scott@lashleyland.com