



4020 PARKLAND ESTATES CT. NORTH PLATTE, NE



A beautiful 3 bedroom 2 bath home on a large corner lot.

BRANDI HOUSMAN

Sales Associate

Brandi's Cell: 308-568-9435

Email: brandi@lashleyland.com

PROPERTY HIGHLIGHTS

List Price**\$315,000****Location**

4020 Parkland Estates Ct., North Platte, NE 69101

Legal Description

Lot 3, Parkland 3rd Administrative Subdivision, North Platte, Lincoln County, Nebraska

Taxes - Estimated**\$3,674.64****Property Summary**

WELCOME HOME to this beautiful 3 bedroom, 2 bathroom 1,461 sq ft home featuring a 3 car garage on a large corner lot on the west edge of town. This home was built in 2019 and comes with many upgrades fit for comfort and entertaining. This all electric home features a split floorplan with the primary with ensuite on the east side of the home and the other 2 bedrooms and bathroom are on the west. The home has a 3 car attached insulated garage with the mechanical room inside as well as crawlspace entrance. The backyard features a large deck extending past the covered patio as well as having a large fully fenced in area. The entire lot had sprinklers installed including the west side. Sellers will need closing to be middle of July. Come see this beautiful property before it is gone!

All information herein is from sources deemed reliable, however the accuracy is not guaranteed by Lashley Land and Recreational Brokers, Inc., seller or agent. Offering is subject to error, omissions, prior sale, price change or withdrawal without notice.

BRANDI HOUSMAN

Sales Associate

Brandi's Cell: 308-568-9435

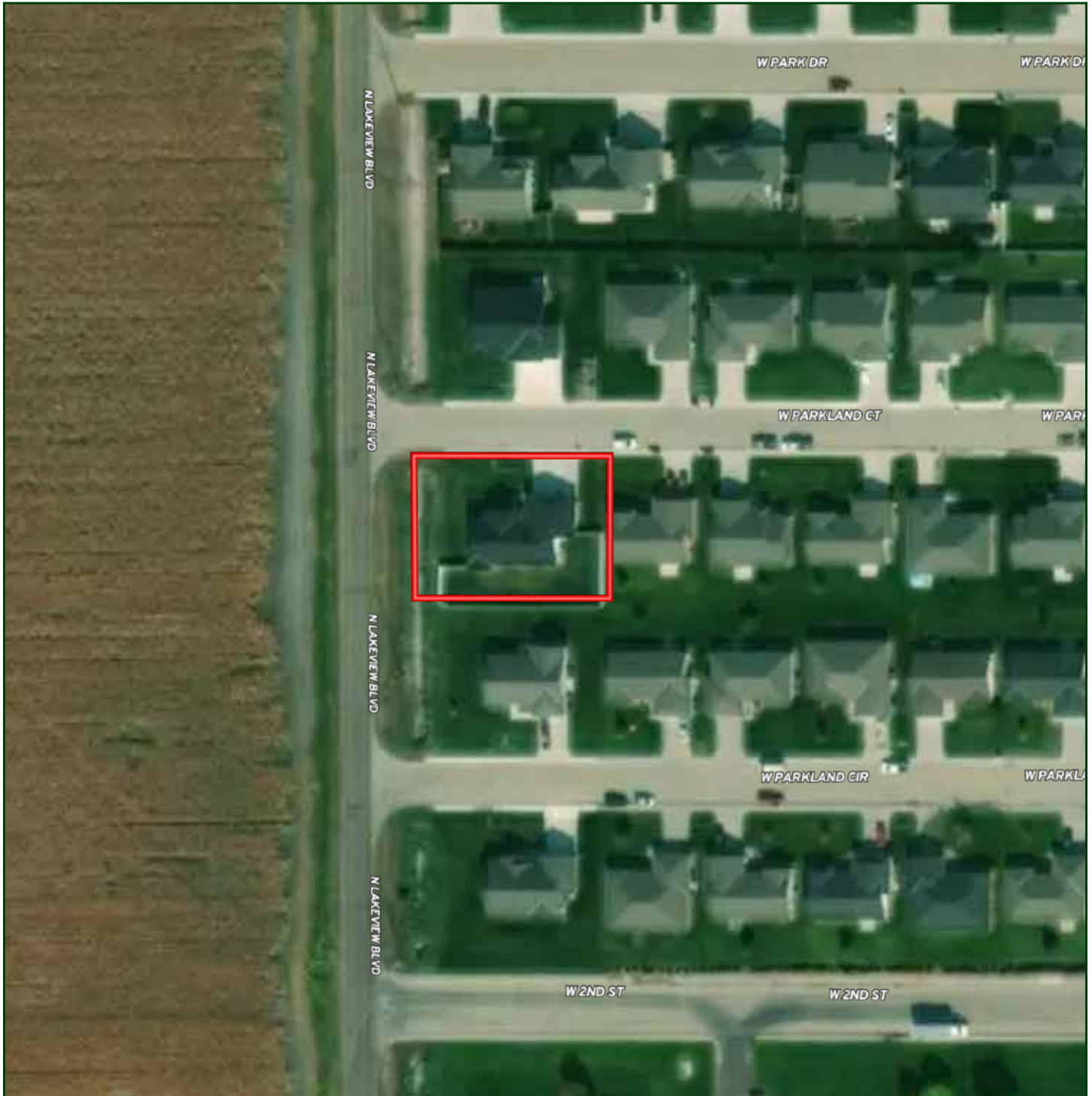
Email: brandi@lashleyland.com

LOCATION MAP



Boundary lines are estimates - Map for illustration only

AERIAL MAP



Boundary lines are estimates - Map for illustration only

BRANDI HOUSMAN

Sales Associate

Brandi's Cell: 308-568-9435

Email: brandi@lashleyland.com

PROPERTY IMAGES



PROPERTY IMAGES



BRANDI HOUSMAN

Sales Associate

Brandi's Cell: 308-568-9435

Email: brandi@lashleyland.com

PROPERTY IMAGES





NEBRASKA EXPERTS, NATIONAL EXPOSURE.

Contact Information

Office: 308-532-9300

Fax: 308-532-1854

Email: info@lashleyland.com

Website: LashleyLand.com

Mike Lashley, Owner|Broker

Amy Lashley-Johnston, Scott Saults, Skip Marland, Jordan Maassen, April Good, Jon Farley, Tami Timmerman-Lashley, Randy Helms, Bill Grant, Shane Mauch, Jake McQuillen, Brandi Housman, Leala Jimerson, Stephanie Miller, DeAnn Vaughn, Ann Gray, Jake Hopwood, Bryan Cabrera, Lindsey Feuerborn, Robby Uehran, and Tom Moss

Like us on Facebook

[Facebook.com/LashleyLand](https://www.facebook.com/LashleyLand)

2218 E. Walker Road • North Platte, NE 69101



BRANDI HOUSMAN

Sales Associate

Brandi's Cell: 308-568-9435

Email: brandi@lashleyland.com