



**323 E. 8TH ST.
NORTH PLATTE, NE**



An all brick home with 2 bedrooms and 1 bath.

TAMI TIMMERMAN-LASHLEY

Residential Specialist

Tami's Cell: 308-660-9468

Email: tami@lashleyland.com

PROPERTY HIGHLIGHTS

List Price **\$88,000**

Location 323 E. 8th St., North Platte, NE 69101

Legal Description

LOT 8, BLOCK 65 OF THE ORIGINAL TOWN OF NORTH PLATTE, LINCOLN COUNTY, NEBRASKA.

Taxes - Estimated **\$1,170.54**

Property Summary

This residential property is an excellent investment opportunity for developers and builders. It is located on a large corner lot and has been demoed inside.

The property features two bedrooms two bathrooms, with an attic room that can be converted into additional living space. There is also a detached two-car garage, offering extra storage or renovation options. The attached 2 car garage has been converted into living space that is finished with LVP flooring and a loft area.

There's a large back yard and side yard complete with a chicken coop!

The property is being sold "as-is," which gives investors the freedom to create their vision without limitations. The layout allows for various remodeling possibilities, making it a great return on investment.

This is a fantastic opportunity for anyone looking to take on a renovation project.

All information is taken from the Lincoln County Assessor card and is not guaranteed or in no way a warranty.

All information herein is from sources deemed reliable, however the accuracy is not guaranteed by Lashley Land and Recreational Brokers, Inc., seller or agent. Offering is subject to error, omissions, prior sale, price change or withdrawal without notice.

TAMI TIMMERMAN-LASHLEY

Residential Specialist

Tami's Cell: 308-660-9468

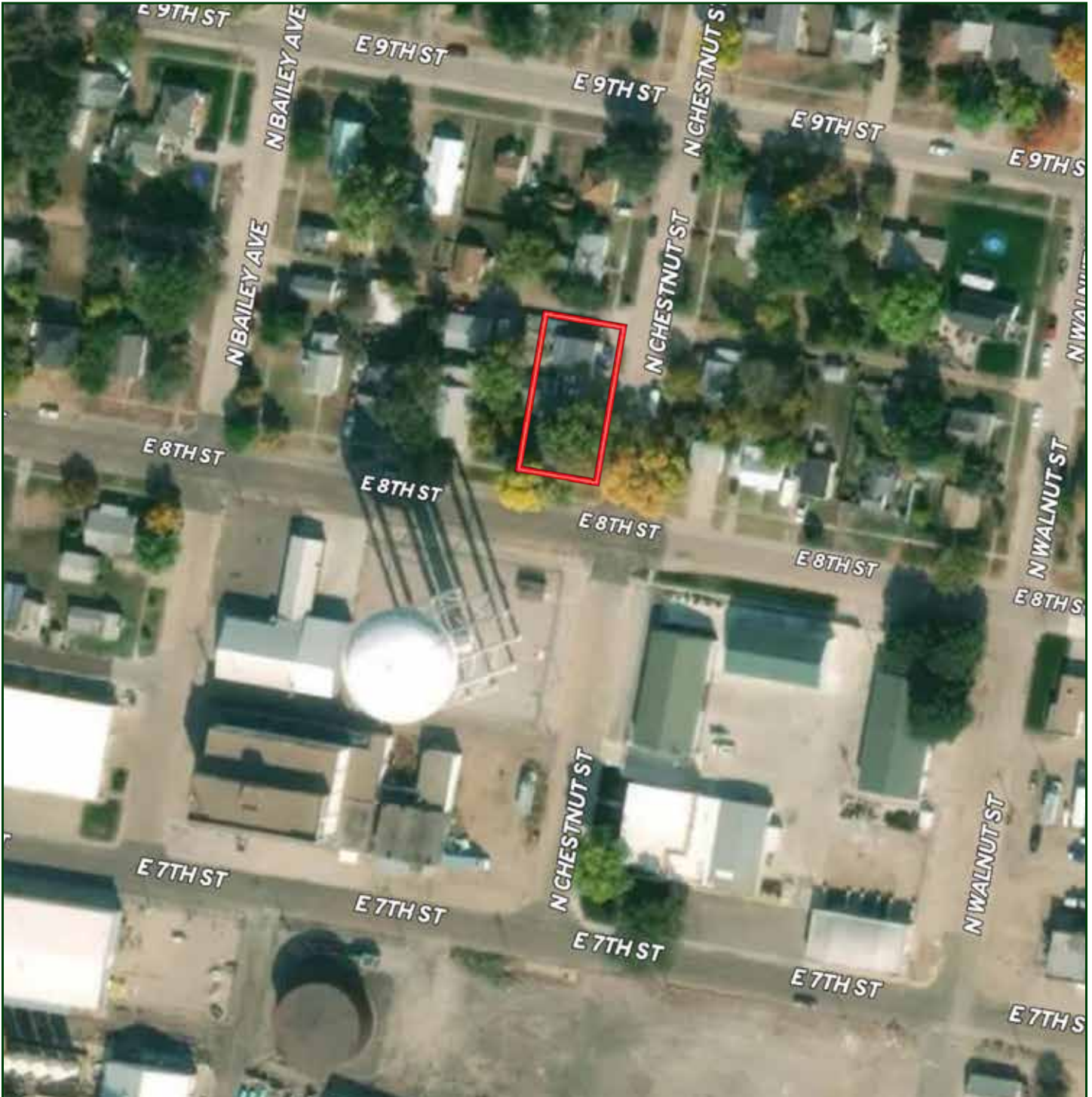
Email: tami@lashleyland.com

LOCATION MAP



Boundary lines are estimates - Map for illustration only

AERIAL MAP



Boundary lines are estimates - Map for illustration only

TAMI TIMMERMAN-LASHLEY

Residential Specialist

Tami's Cell: 308-660-9468

Email: tami@lashleyland.com

PROPERTY IMAGES



PROPERTY IMAGES



TAMI TIMMERMAN-LASHLEY

Residential Specialist

Tami's Cell: 308-660-9468

Email: tami@lashleyland.com

PROPERTY IMAGES





NEBRASKA EXPERTS, NATIONAL EXPOSURE.

Contact Information

Office: 308-532-9300

Fax: 308-532-1854

Email: info@lashleyland.com

Website: LashleyLand.com

Mike Lashley, Owner | Broker

Amy Lashley-Johnston, Scott Saults, Skip Marland, Jordan Maassen, April Good, Jon Farley, Tami Timmerman-Lashley, Randy Helms, Bill Grant, Shane Mauch, Jake McQuillen, Brandi Housman, Leala Jimerson, Stephanie Miller, DeAnn Vaughn, Ann Gray, Jake Hopwood, Bryan Cabrera, Lindsey Feuerborn, Robby Uehran, and Tom Moss

Like us on Facebook
[Facebook.com/LashleyLand](https://www.facebook.com/LashleyLand)

2218 E. Walker Road • North Platte, NE 69101



TAMI TIMMERMAN-LASHLEY

Residential Specialist

Tami's Cell: 308-660-9468

Email: tami@lashleyland.com