



# Riverside Development

North Platte, NE

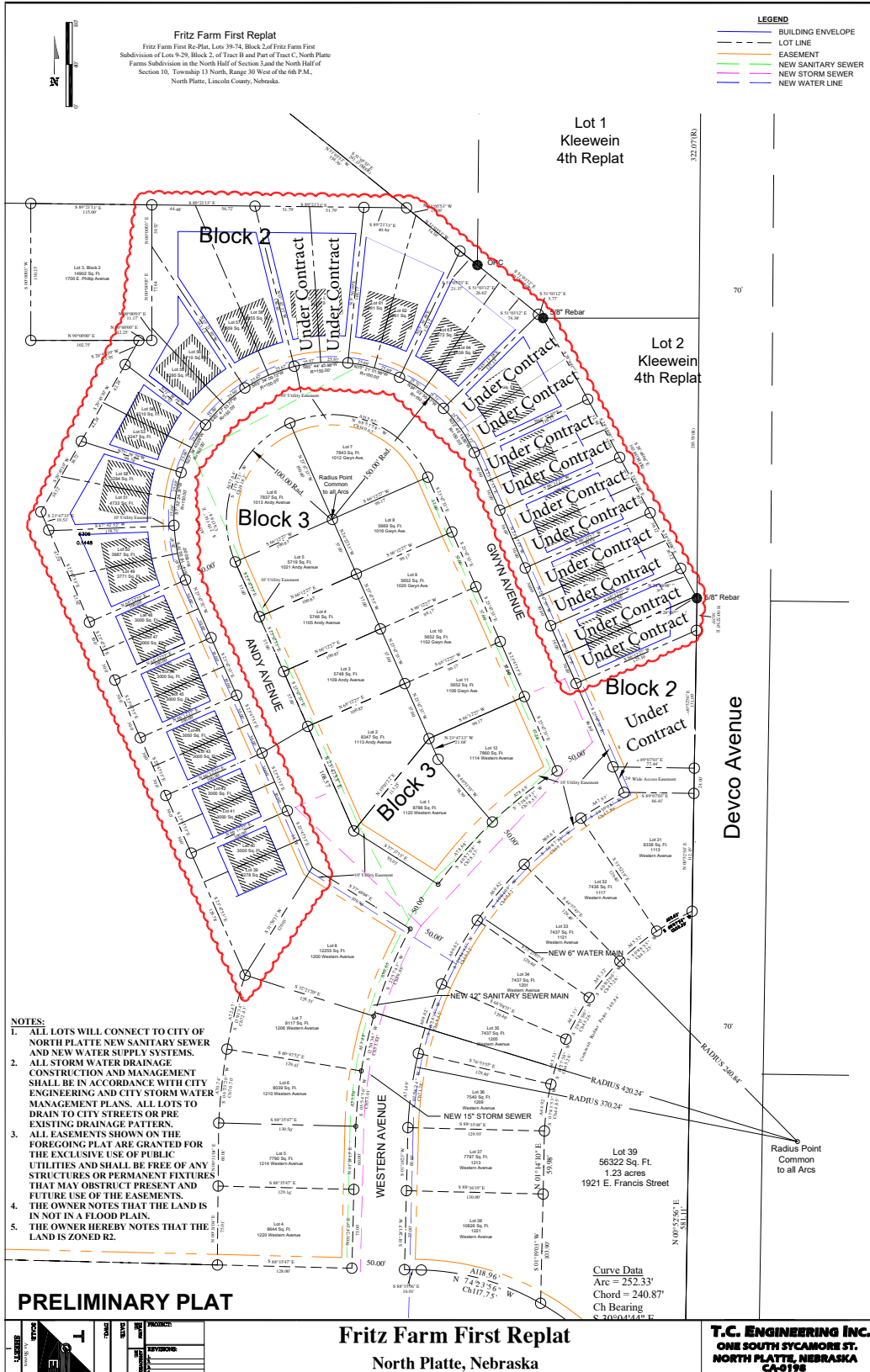


HOMESTEAD  
COMMUNITIES

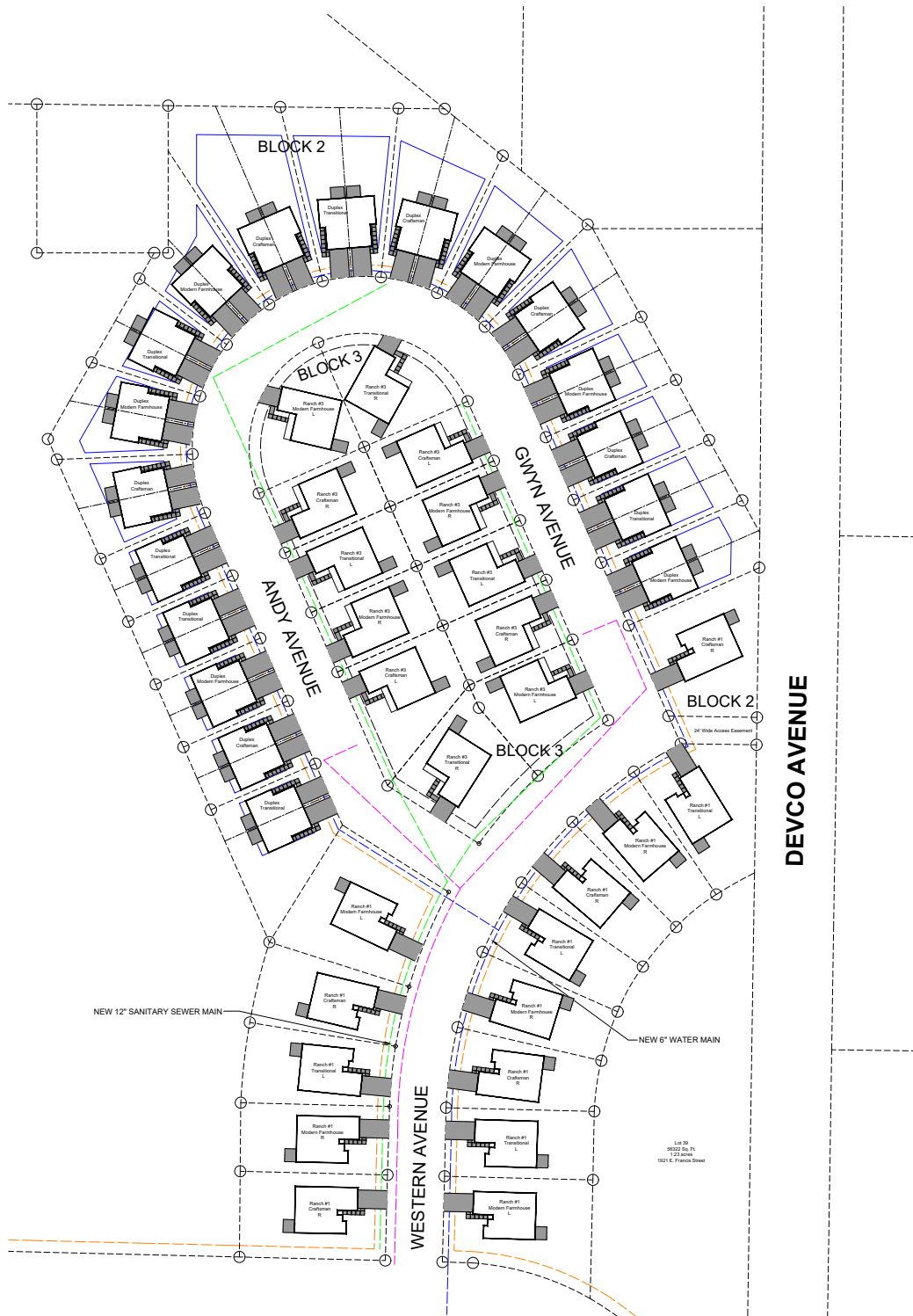


[LashleyLand.com](http://LashleyLand.com) | [Homestead.us](http://Homestead.us) | 308-893-6234

# Available Lots



# Design Designation Map



# The Driftwood

Modern Farmhouse Exterior



Blending rustic charm with modern simplicity, The Driftwood offers a single-level living experience shaped by nature and designed for flexibility. Its open-concept layout supports everything from entertaining to remote work, while natural materials and clean lines create a sense of calm and authenticity. Ideal for families and professionals who value texture, flow, and connection to their surroundings, this home adapts gracefully to each stage of life.

## Starting at: \$289,900

- 3 bed/2 bath, ranch home
- 1502 livable sq ft
- Two car garage



# The Driftwood

## Character

Grounded yet refined, The Driftwood balances modern form with earthy warmth. Lap siding, stone accents, and wood details express timeless craftsmanship, while interiors feel light, open, and purposeful. Large windows frame outdoor views, and covered porches extend living spaces seamlessly into the environment. Every element emphasizes natural beauty, practicality, and understated sophistication.

## Specifications

- Total Finished Living Area: 1,502 sq. ft.
- Main Level: 1,502 sq. ft.
- Unfinished Spaces:
  - Covered Stoop: 138 sq. ft.
  - Garage: 414 sq. ft.
  - Patio: 140 sq. st.
- Bedrooms: 3
- Bathrooms: 2
- Garage: Attached two-stall
- Ceilings: 8' throughout main level
- Construction Details:
  - 2×6 exterior and 2×4 interior walls
  - 12"x36" frost-free trench footing with slab-on-grade foundation
  - Wall bracing method: CS-WSP
  - Energy-efficient insulation (R-19 minimum)
  - Engineered trusses and LVL headers throughout

## Layout Highlights

- Open-concept kitchen, dining, and living area with snack bar and patio access
- Primary suite with walk-in closet and ensuite bath
- Two additional bedrooms and shared full bath
- Dedicated laundry near bedrooms for convenience
- Covered front stoop and rear patio extend indoor-outdoor living
- Garage access flows directly to kitchen and storage areas

## Ideal For

- Families seeking balance between nature and modern comfort
- Remote professionals or creatives wanting open, flexible space
- Homeowners who appreciate earthy design and efficient single-level living

Transitional Exterior



Craftsman Exterior



# The Haven

Transitional Exterior



Designed for balance, comfort, and efficiency, this duplex brings timeless architecture to modern living. Each residence offers functional two-story design tailored for families, young professionals, or downsizers who value thoughtful space without excess. Open layouts, abundant natural light, and smart use of every square foot create a calm, low-maintenance home environment that feels both connected and private.

## Starting at: \$259,900

- 4 bed/2.5 bath, two story home
- 1507 livable sq ft
- Two car garage



# The Haven

## Character

Warm, refined, and practical, the Craftsman Duplex blends classic curb appeal with modern simplicity. The exterior features lap siding, stone accents, and covered porches, while inside, clean lines and open spaces promote flow and comfort. Soft color palettes and flexible indoor-outdoor connections make it easy to personalize and enjoy — from cozy mornings to evening gatherings on the private patio.

## Specifications

- Total Finished Living Area: 1,507 sq. ft. per unit
- Main Level: 606 sq. ft.
- Second Floor: 901 sq. ft.
- Unfinished Spaces:
  - Garage: 386 sq. ft.
  - Patio: 120 sq. ft.
- Bedrooms: 4
- Bathrooms: 2.5
- Garage: Attached two-stall
- Ceilings: 8'-1" throughout both floors
- Construction Details:
  - 2×6 exterior and 2×4 interior walls
  - 12"x36" frost-free trench footing with slab-on-grade foundation
  - Fire-rated separation wall between units (2-hour UL Type SCX)
  - Energy-efficient insulation meeting IECC standards
  - 18" engineered floor trusses at 16" or 19.2" O.C. spacing

## Layout Highlights

- Open-concept main floor with kitchen island, dining area, and large living room
- Half bath conveniently located under the staircase
- Upstairs features a spacious primary suite with walk-in closet and ensuite bath
- Three additional bedrooms with a shared full bath
- Dedicated upper-level laundry for convenience
- Private fenced patio area extending the living space outdoors

## Ideal For

- Growing families wanting practical space and modern comfort
- Professionals or couples seeking simplicity and design efficiency
- Investors looking for a durable, high-demand multi-unit asset

Modern Farmhouse Exterior



Craftsman Exterior



# The Willow

Craftsman Exterior



Balanced, welcoming, and timeless, The Willow blends modern design with the warmth of tradition. Its open-concept layout centers around a functional kitchen hub that connects seamlessly to the great room and dining area, making it perfect for everyday living and family gatherings. With intuitive flow and a strong connection to the outdoors, this single-level plan supports a relaxed lifestyle while maintaining architectural sophistication.

## Starting at: \$289,900

- 3 bed/2 bath, ranch home
- 1496 livable sq ft
- Two car garage



# The Willow

## Character

Rooted in simplicity and grace, The Willow carries the charm of a Modern Farmhouse with clean lines and organic warmth. Vertical siding, modest trim detailing, and covered outdoor spaces create a look that feels both current and familiar. Inside, natural light, soft tones, and thoughtful finishes highlight a sense of calm and connection — equally suited for a Riverside setting or a quiet neighborhood street.

## Specifications

- Total Finished Living Area: 1,496 sq. ft.
- Main Level: 1,496 sq. ft.
- Unfinished Spaces:
  - Covered Stoop: 19 sq. ft.
  - Garage: 397 sq. ft.
  - Patio: 113 sq. ft.
- Bedrooms: 3
- Bathrooms: 2
- Garage: Attached two-stall
- Ceilings: 8' throughout main level

## Construction Details:

- 2×6 exterior and 2×4 interior walls
- 12"x36" frost-free trench footing with slab-on-grade foundation
- Wall bracing method: CS-WSP
- Energy-efficient insulation (R-19 minimum)
- Engineered LVL headers and roof trusses per manufacturer design

## Layout Highlights

- Spacious open-concept living with kitchen, dining, and great room flow
- Primary suite with walk-in closet and ensuite bath
- Two secondary bedrooms and full shared bath
- Central laundry with easy access from bedrooms and garage
- Covered front stoop and rear patio for indoor-outdoor living
- Efficient circulation with minimal hallway waste

## Ideal For

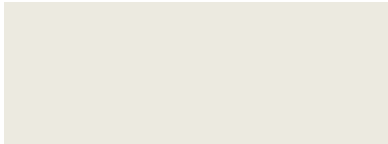
- Families who value shared spaces and everyday comfort
- Buyers seeking a single-level layout with timeless appeal
- Homeowners who want a blend of elegance and practicality



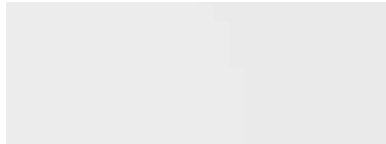
# Design Options



Wall Paint



Trim Color



Cabinet Style & Color



Carpet



Countertop



LVP



Hardware



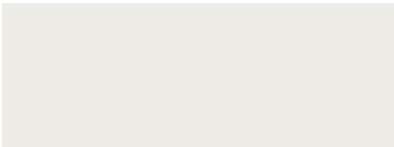
INTERIOR PACKAGE  
Light & Airy



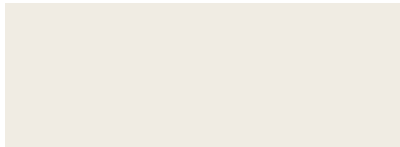
# Design Options



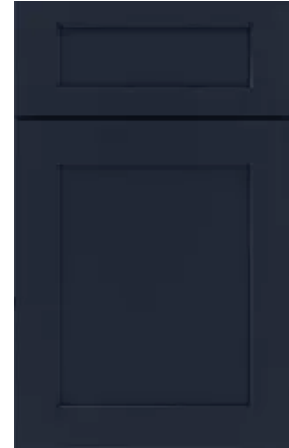
Wall Paint



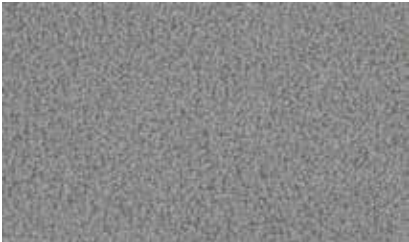
Trim Color



Cabinet Style & Color



Carpet



Countertop



LVP



Hardware



INTERIOR PACKAGE  
Modern Bold



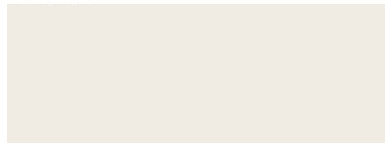
# Design Options



Wall Paint



Trim Color



Cabinet Style & Color



Carpet



Countertop



LVP



Hardware



INTERIOR PACKAGE  
Warm & Organic



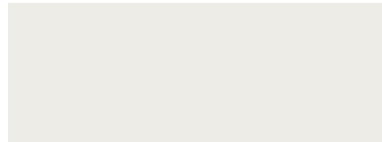
# Design Options



Wall Paint



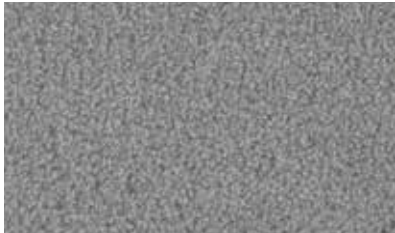
Trim Color



Cabinet Style & Color



Carpet



Countertop



LVP



Hardware



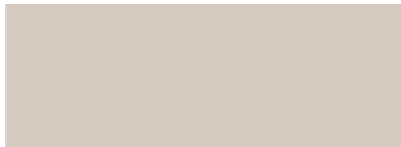
INTERIOR PACKAGE  
Soft Contemporary



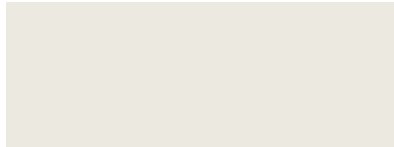
# Design Options



Wall Paint



Trim Color



Cabinet Style & Color



Carpet



Countertop



LVP



Hardware



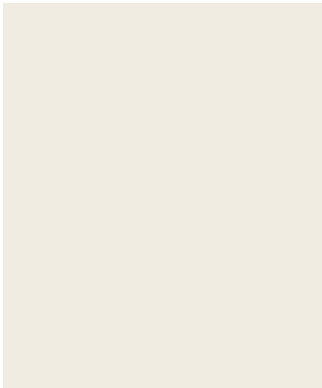
INTERIOR PACKAGE  
Natural & Earthy



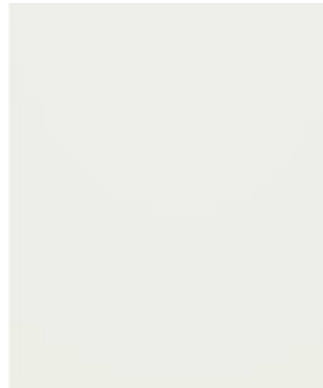
# Design Options



Hardie Board Color



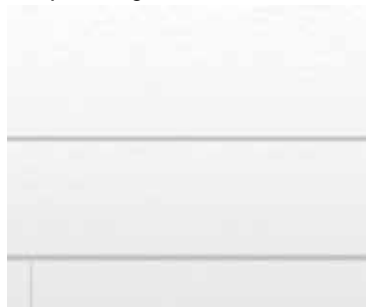
Hardie Board Trim Color



Unpainted Hardie Board Siding & Trim



Vinyl Siding Color



Shingle Color



Door Color



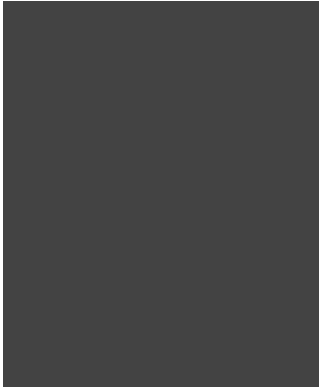
EXTERIOR PACKAGE  
Classic Neutral



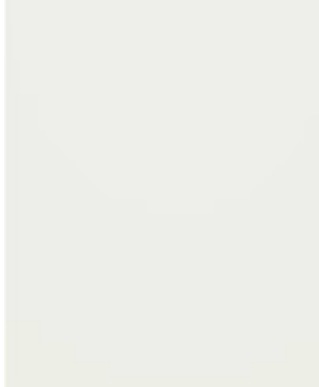
# Design Options



Hardie Board Color



Hardie Board Trim Color



Unpainted Hardie Board Siding & Trim



Vinyl Siding Color



Shingle Color



Door Color



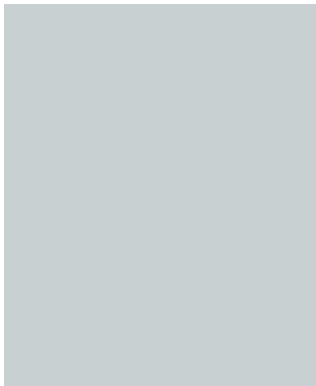
EXTERIOR PACKAGE  
Urban Contrast



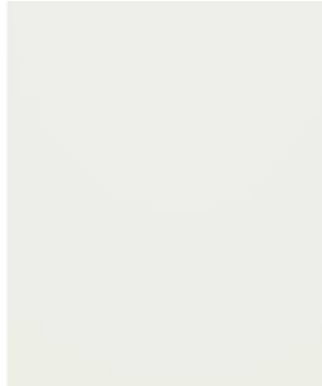
# Design Options



Hardie Board Color



Hardie Board Trim Color



Unpainted Hardie Board Siding & Trim



Vinyl Siding Color



Shingle Color



Door Color



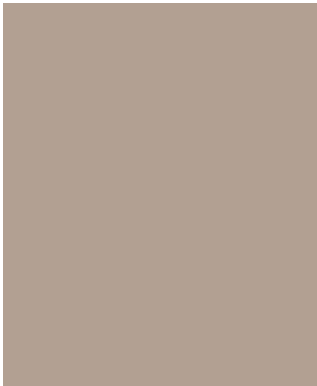
EXTERIOR PACKAGE  
Coastal Light



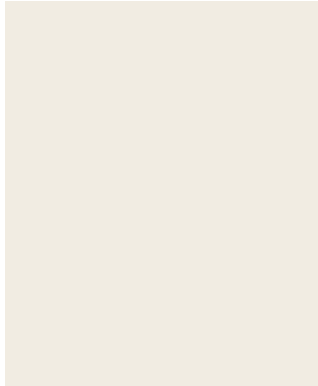
# Design Options



Hardie Board Color



Hardie Board Trim Color



Unpainted Hardie Board Siding & Trim



Vinyl Siding Color



Shingle Color



Door Color



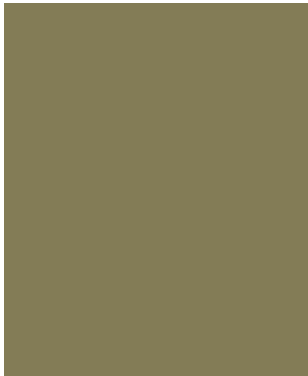
EXTERIOR PACKAGE  
Terra & Stone



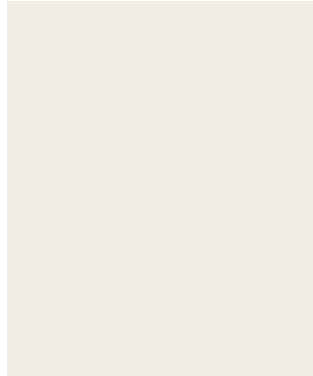
# Design Options



Hardie Board Color



Hardie Board Trim Color



Unpainted Hardie Board Siding & Trim



Vinyl Siding Color



Shingle Color



Door Color



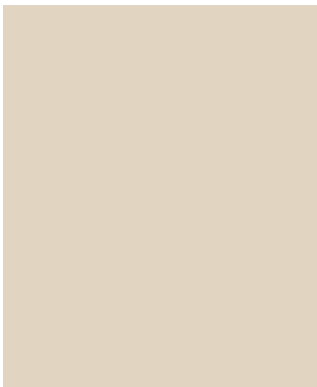
EXTERIOR PACKAGE  
Heritage Oak



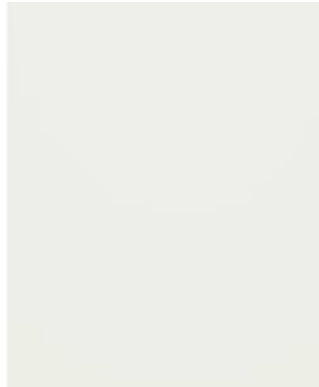
# Design Options



Hardie Board Color



Hardie Board Trim Color



Unpainted Hardie Board Siding & Trim



Vinyl Siding Color



Shingle Color



Door Color



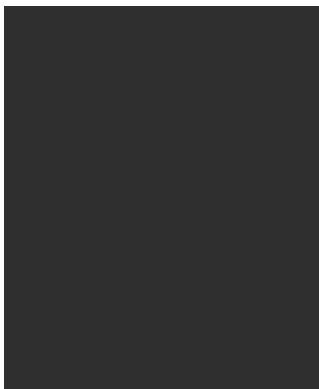
EXTERIOR PACKAGE  
Desert Modern



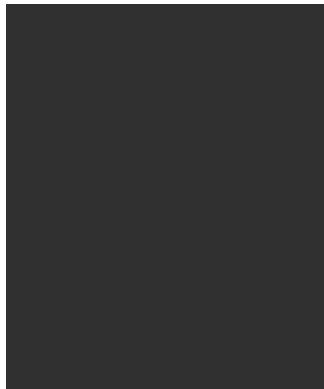
# Design Options



Hardie Board Color



Hardie Board Trim Color



Unpainted Hardie Board Siding & Trim



Vinyl Siding Color



Shingle Color



Door Color



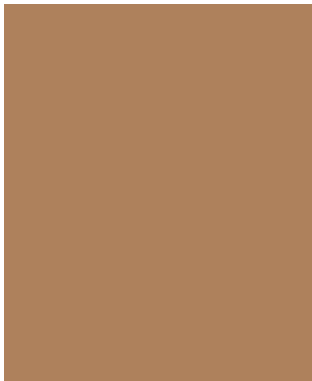
EXTERIOR PACKAGE  
Shadow Modern



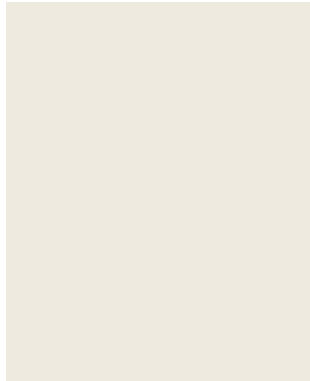
# Design Options



Hardie Board Color



Hardie Board Trim Color



Unpainted Hardie Board Siding & Trim



Vinyl Siding Color



Shingle Color



Door Color



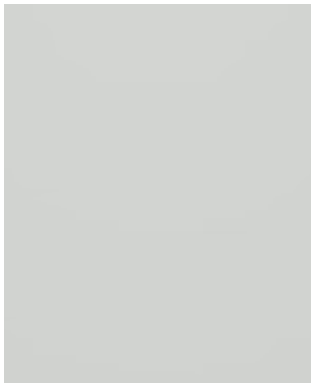
EXTERIOR PACKAGE  
Refined Clay



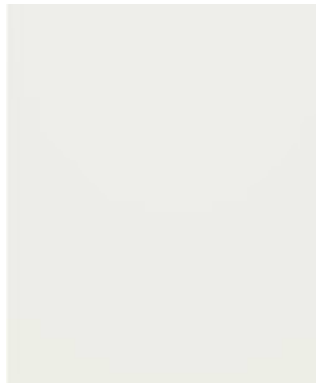
# Design Options



Hardie Board Color



Hardie Board Trim Color



Unpainted Hardie Board Siding & Trim



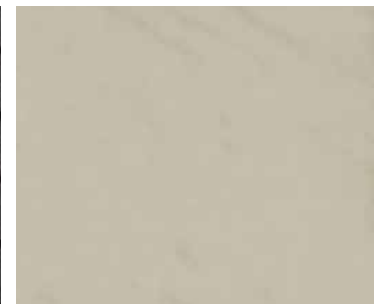
Vinyl Siding Color



Shingle Color



Door Color



EXTERIOR PACKAGE  
Misty Reflection





HOMESTEAD  
— COMMUNITIES —



[LashleyLand.com](http://LashleyLand.com) | [Homestead.us](http://Homestead.us) | 308-893-6234