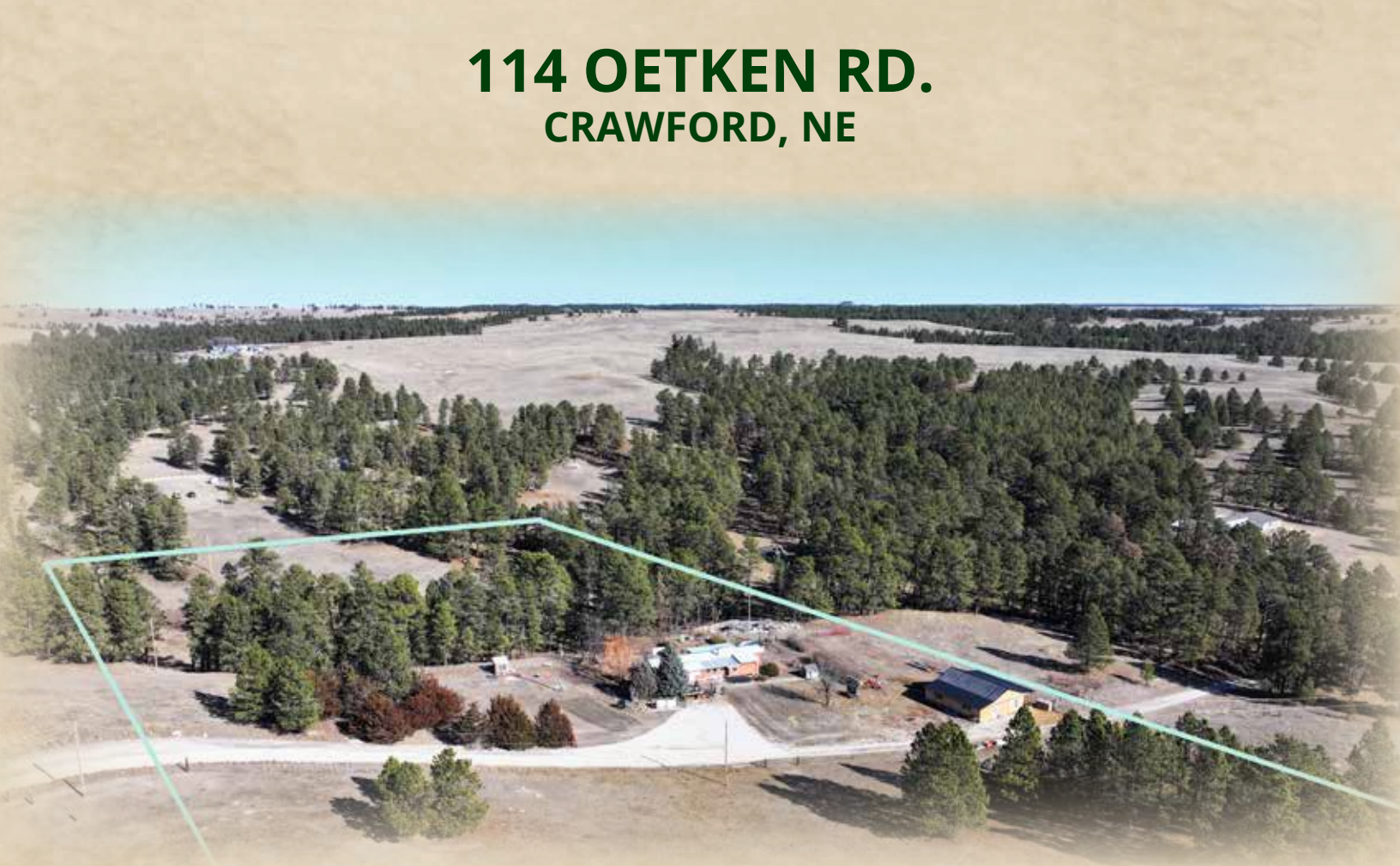




**114 OETKEN RD.
CRAWFORD, NE**



10± acres nestled in the Pine Ridge area of Nebraska.

AMY LASHLEY-JOHNSTON

Sales Associate

Amy's Cell: 402-416-4306

Email: amy@lashleyland.com

PROPERTY HIGHLIGHTS

List Price

\$225,000

Location

114 Oetken Rd., Crawford, NE 69339

Acres

10.13±

Buyers and Sellers acknowledge all represented acres are based on the County Assessor's records.

Buyers acknowledge that they are purchasing a legal description, and acknowledge that fences may or may not be on the property lines.

Property Summary

114 Oetken Road- 10.13 acres nestled in the pines located 14 miles southeast of Crawford, 16 miles from Fort Robinson State Park, 37 miles from Chadron, and only minutes away from surrounding area wildlife management areas. This property is perfect for anyone wanting to enjoy country living more at ease with the peace of mind knowing neighbors aren't too far away. It would also be a great home base for seasonal hunters! The 1989 home has two bedrooms and one bath. The newly constructed shop has a finished interior and concrete floor.

A survey was recently completed.

All information herein is from sources deemed reliable, however the accuracy is not guaranteed by Lashley Land and Recreational Brokers, Inc., seller or agent. Offering is subject to error, omissions, prior sale, price change or withdrawal without notice.

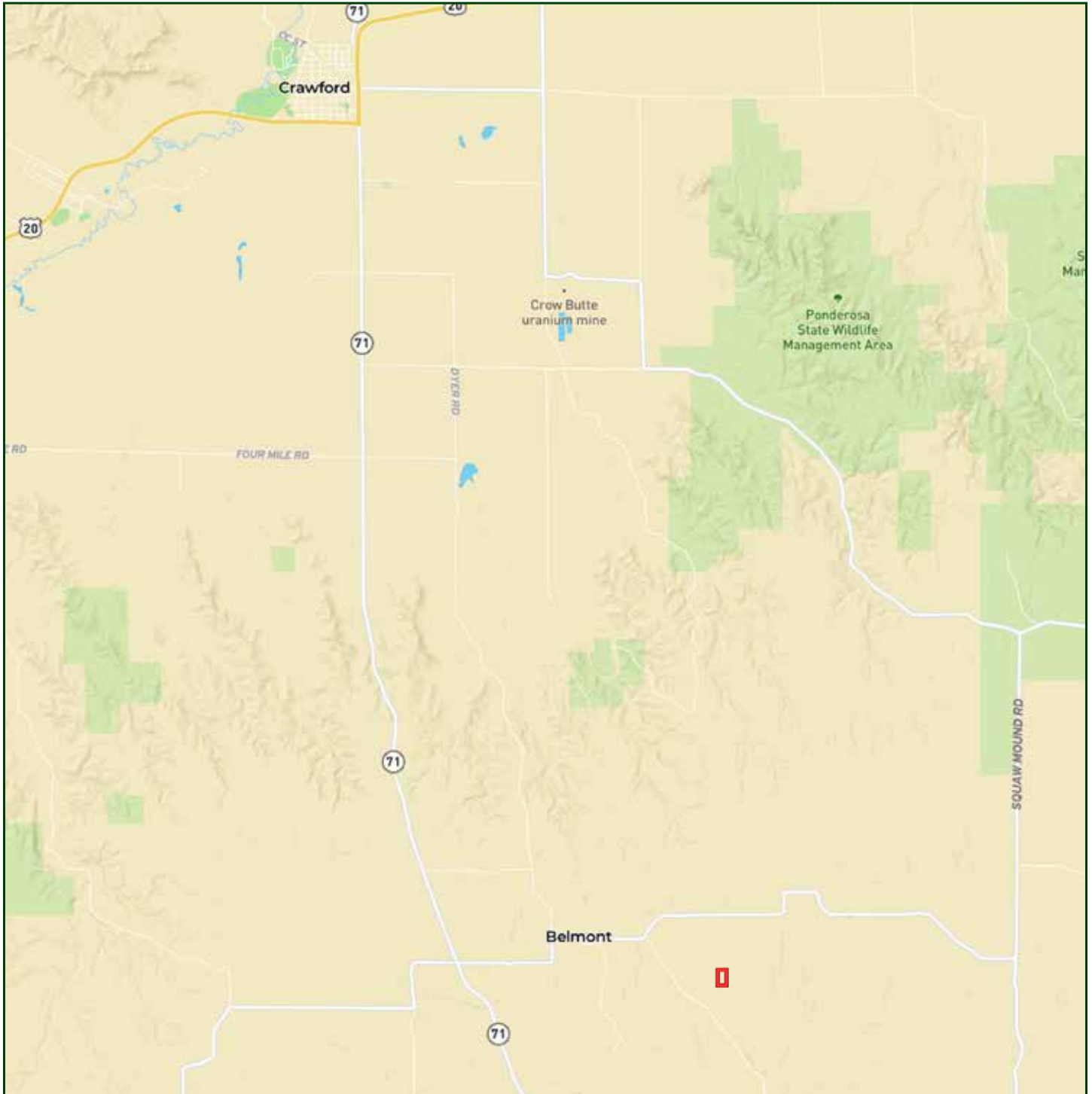
AMY LASHLEY-JOHNSTON

Sales Associate

Amy's Cell: 402-416-4306

Email: amy@lashleyland.com

LOCATION MAP



Boundary lines are estimates - Map for illustration only

AERIAL MAP



Boundary lines are estimates - Map for illustration only

AMY LASHLEY-JOHNSTON

Sales Associate

Amy's Cell: 402-416-4306

Email: amy@lashleyland.com

PROPERTY IMAGES



PROPERTY IMAGES



AMY LASHLEY-JOHNSTON

Sales Associate

Amy's Cell: 402-416-4306

Email: amy@lashleyland.com

PROPERTY IMAGES





NEBRASKA EXPERTS, NATIONAL EXPOSURE.

Contact Information

Office: 308-532-9300

Fax: 308-532-1854

Email: info@lashleyland.com

Website: LashleyLand.com

Mike Lashley, Owner | Broker

Amy Lashley-Johnston, Scott Saults, Skip Marland, Jordan Maassen, April Good, Jon Farley, Tami Timmerman-Lashley, Randy Helms, Bill Grant, Shane Mauch, Jake McQuillen, Brandi Housman, Leala Jimerson, Stephanie Miller, DeAnn Vaughn, Ann Gray, Jake Hopwood, Bryan Cabrera, Lindsey Feuerborn, Robby Uehran, and Tom Moss

Like us on Facebook
[Facebook.com/LashleyLand](https://www.facebook.com/LashleyLand)

2218 E. Walker Road • North Platte, NE 69101



AMY LASHLEY-JOHNSTON

Sales Associate

Amy's Cell: 402-416-4306

Email: amy@lashleyland.com