



**2309 W. 17TH ST.  
NORTH PLATTE, NE**



A studio style home with a large backyard.

**BRANDI HOUSMAN**

Sales Associate

Brandi's Cell: 308-568-9435

Email: [brandi@lashleyland.com](mailto:brandi@lashleyland.com)

# PROPERTY HIGHLIGHTS

## List Price

~~75,000~~

**\$70,000**

## Location

1309 W 17th St., North Platte, NE

## Legal Description

LOT 13, BLOCK 1, IN LILLEY'S SUBDIVISION OF PARCEL MAP A & B OF A PART OF LOT 8 OF CODY LAND AND CATTLE COMPANYS SUBDIVISION IN SECTION 29, TOWNSHIP 14 BORTH, RANGE 30 WEST OF THE 6TH P.M., IN NORTH PLATTE, LINCOLN COUNTY, NEBRASKA

## Taxes - Estimated

**\$790.32**

## Property Summary

Welcome home to this cozy, quaint, cottage style home on a large fenced in lot with its own single car garage. This home is a studio layout with all open spaces from kitchen, living and bedroom. There are 3 closet areas in the home as well as a designated laundry space and a private bathroom. There is a small patio area between the house and the garage and inside the heated garage is space to park a car and additional storage room. This home is on a 15,325 sq ft lot fully fenced in area and big enough for all your gardening, planting and pet needs. This lot is large enough to build with plenty of options. Perfect home for someone wanting a large lot and small home to upkeep. All the character and charm with this one makes it truly one of a kind in our area. Come see this gem before it is gone!

All information herein is from sources deemed reliable, however the accuracy is not guaranteed by Lashley Land and Recreational Brokers, Inc., seller or agent. Offering is subject to error, omissions, prior sale, price change or withdrawal without notice.

**BRANDI HOUSMAN**

Sales Associate

Brandi's Cell: 308-568-9435

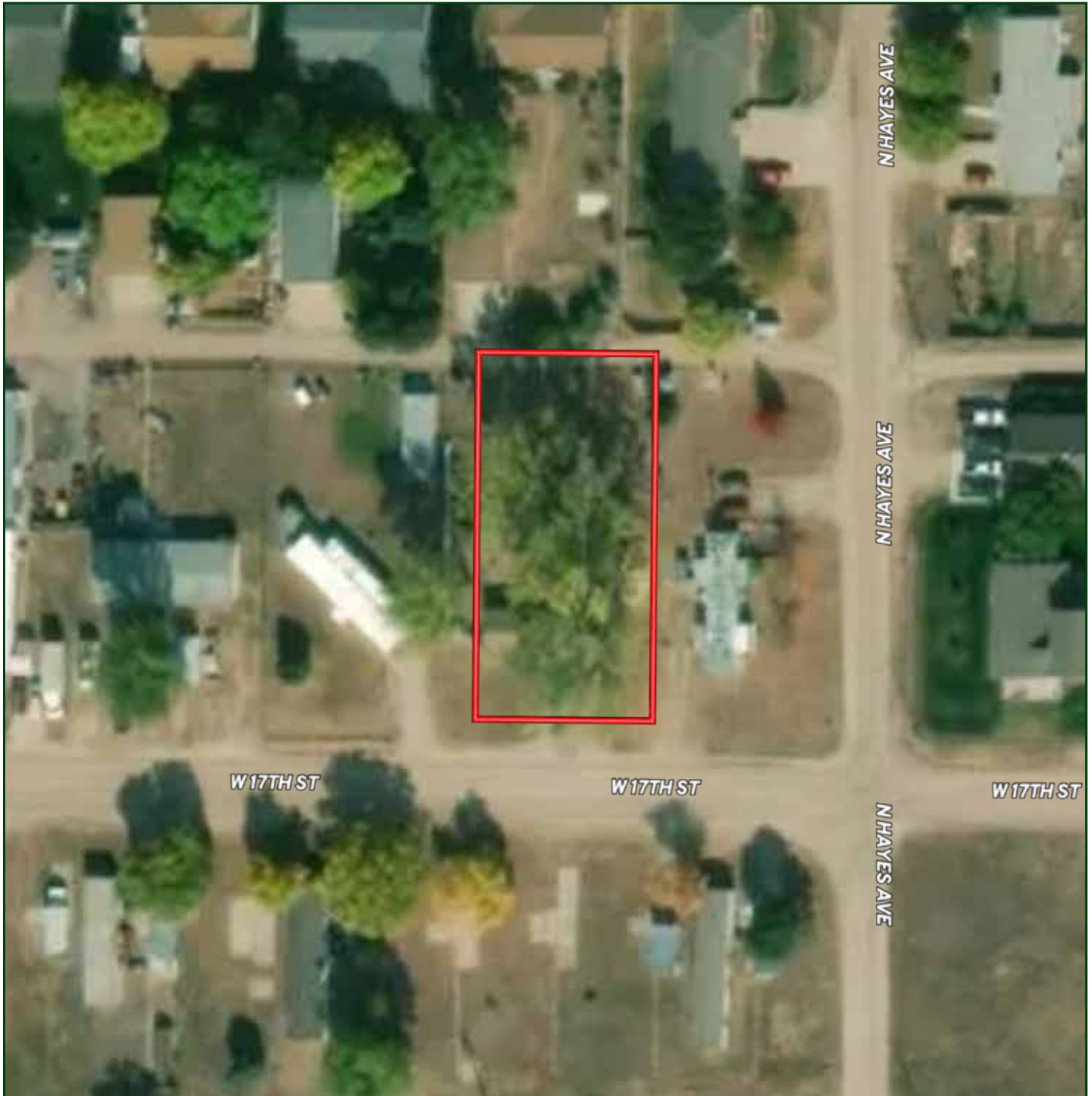
Email: brandi@lashleyland.com

# LOCATION MAP



Boundary lines are estimates - Map for illustration only

# AERIAL MAP



Boundary lines are estimates - Map for illustration only

**BRANDI HOUSMAN**

Sales Associate

Brandi's Cell: 308-568-9435

Email: [brandi@lashleyland.com](mailto:brandi@lashleyland.com)



# PROPERTY IMAGES



# PROPERTY IMAGES



**BRANDI HOUSMAN**

Sales Associate

Brandi's Cell: 308-568-9435

Email: [brandi@lashleyland.com](mailto:brandi@lashleyland.com)



# PROPERTY IMAGES





## NEBRASKA EXPERTS, NATIONAL EXPOSURE.

### Contact Information

Office: 308-532-9300

Fax: 308-532-1854

Email: [info@lashleyland.com](mailto:info@lashleyland.com)

Website: [LashleyLand.com](http://LashleyLand.com)

### Mike Lashley, Owner | Broker

Amy Lashley-Johnston, Scott Saults, Skip Marland, Jordan Maassen, April Good, Jon Farley, Tami Timmerman-Lashley, Randy Helms, Bill Grant, Shane Mauch, Jake McQuillen, Brandi Housman, Leala Jimerson, Stephanie Miller, DeAnn Vaughn, Ann Gray, Jake Hopwood, Bryan Cabrera, Lindsey Feuerborn, Robby Uehran, and Tom Moss

Like us on Facebook  
[Facebook.com/LashleyLand](https://www.facebook.com/LashleyLand)

2218 E. Walker Road • North Platte, NE 69101



## BRANDI HOUSMAN

Sales Associate

Brandi's Cell: 308-568-9435

Email: [brandi@lashleyland.com](mailto:brandi@lashleyland.com)