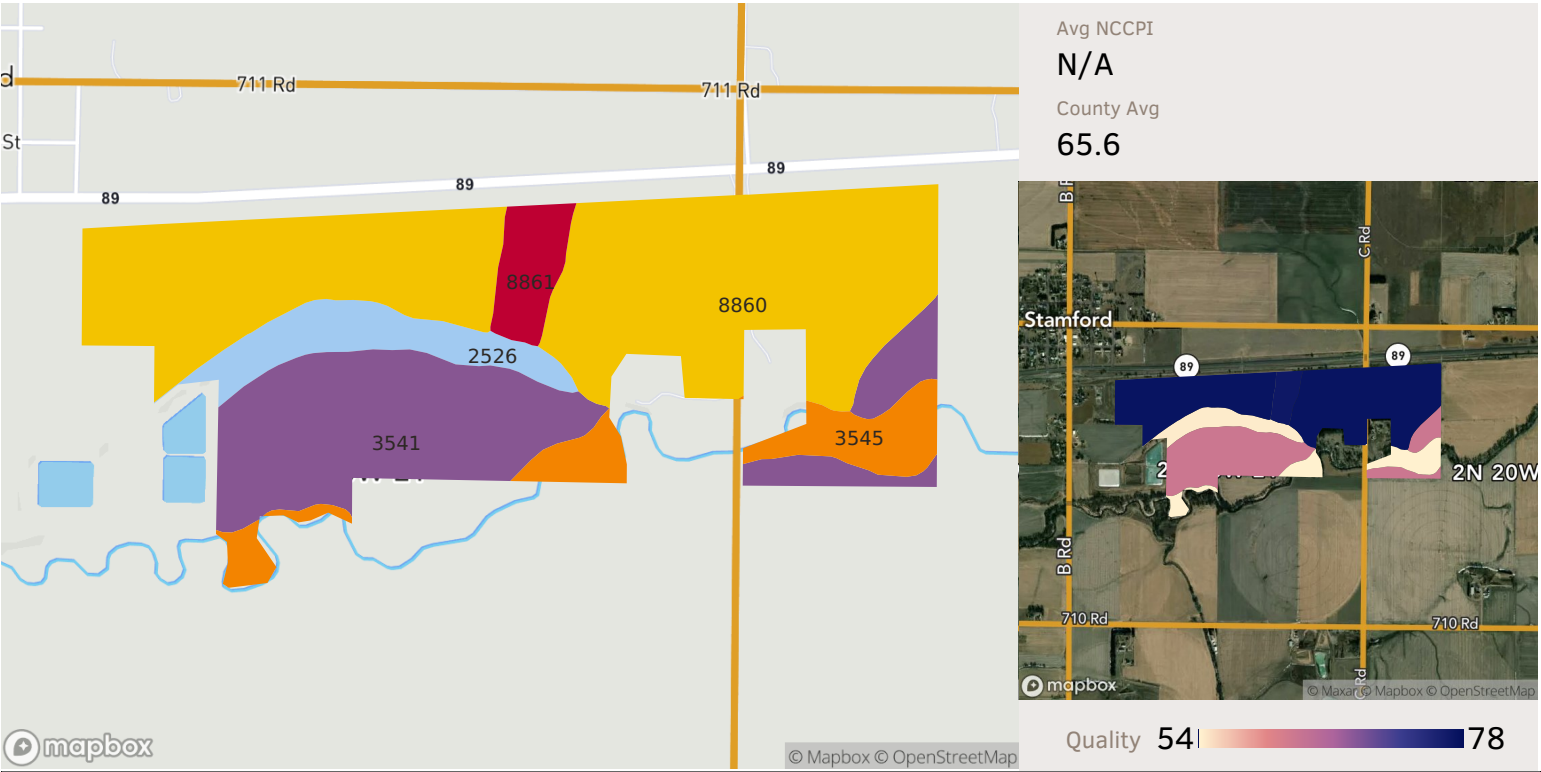


3 fields, 218 acres in Harlan County, NE

Township/Section 2N 20W — 21, 22



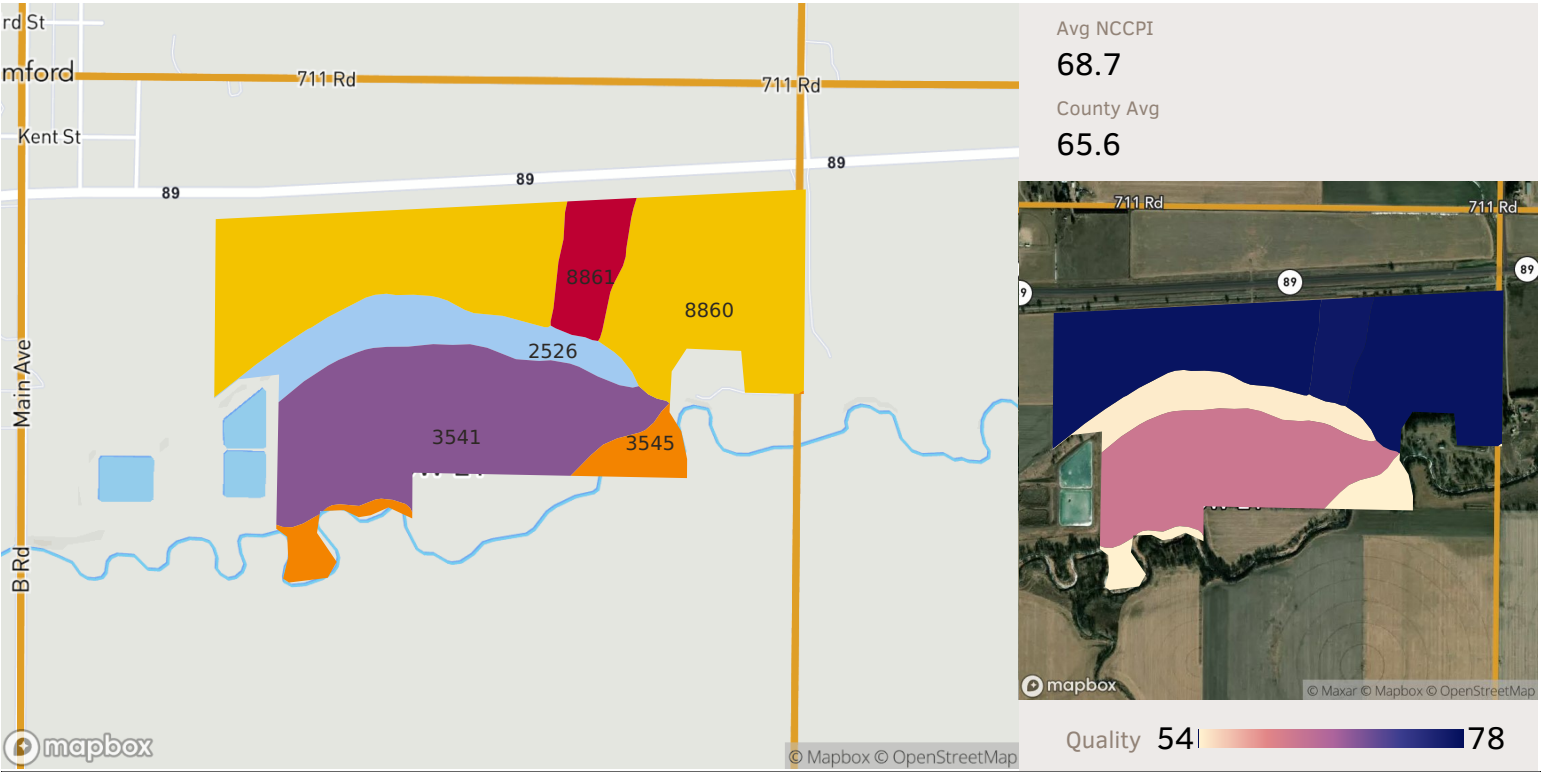
Source: NRCS Soil Survey

All fields  
218 ac.

Soil Code	Soil Description	Acres	Percentage of Field	Soil Class	NCCPI
8860	Hord and Hall silt loams, 0 to 1 percent slopes	118.24	54.2%	2	77.1
3541	Hobbs and McCook silt loams, occasionally flooded	56.92	26.1%	2	62.6
3545	Hobbs silt loam, channeled, frequently flooded	18.31	8.4%	5	45.9
2526	Coly and Nuckolls silt loams, 11 to 30 percent slopes, eroded	16.12	7.4%	6	54.3
8861	Hord and Hall silt loams, 1 to 3 percent slopes	8.60	3.9%	2	76.6
218.20					69.0

3 fields, 218 acres in Harlan County, NE

Township/Section 2N 20W — 21, 22



Source: NRCS Soil Survey

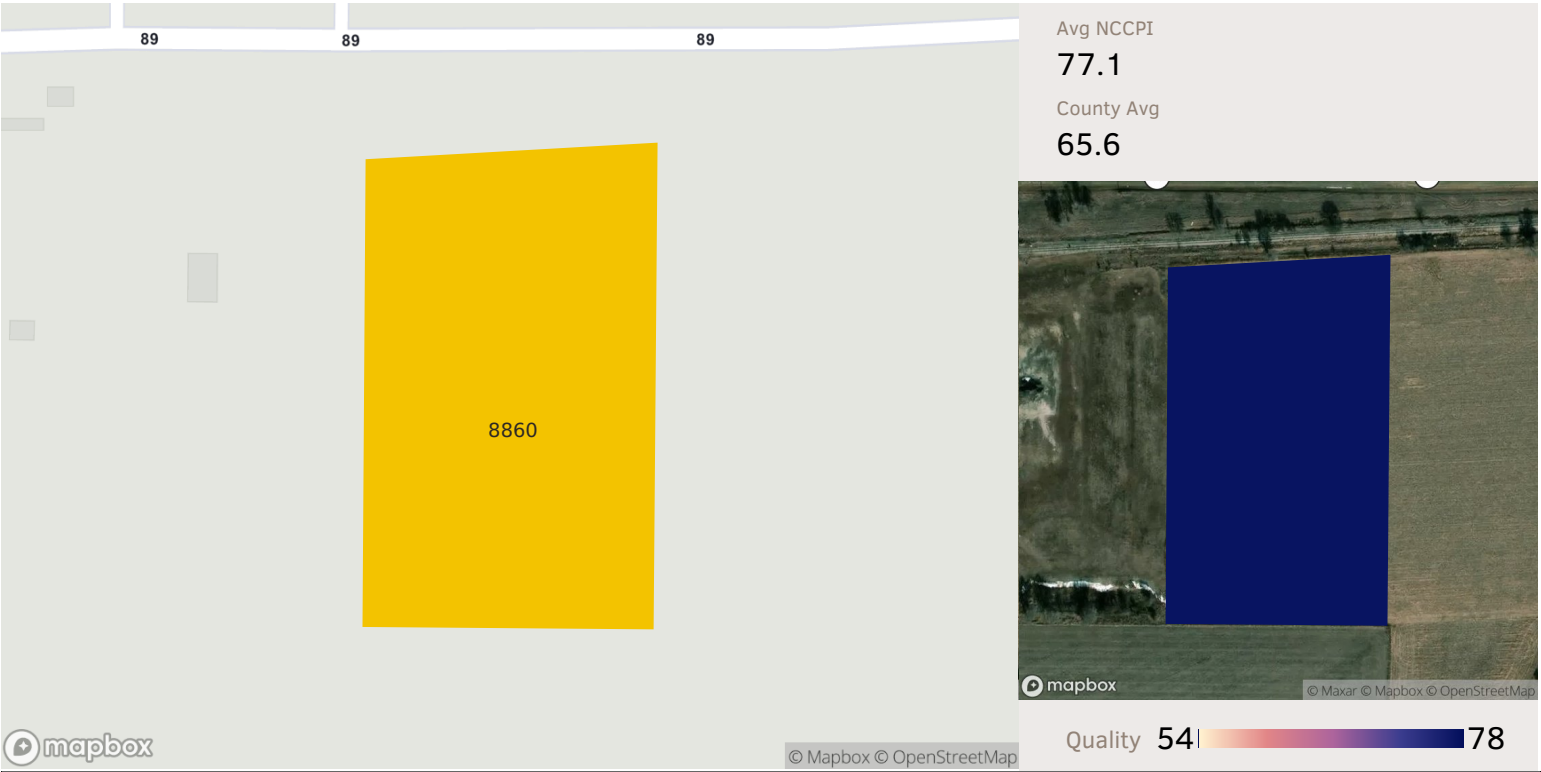
Field 1

156 ac.

Soil Code	Soil Description	Acres	Percentage of Field	Soil Class	NCCPI
8860	Hord and Hall silt loams, 0 to 1 percent slopes	76.18	48.9%	2	77.1
3541	Hobbs and McCook silt loams, occasionally flooded	46.80	30.0%	2	62.6
2526	Coly and Nuckolls silt loams, 11 to 30 percent slopes, eroded	16.12	10.3%	6	54.3
8861	Hord and Hall silt loams, 1 to 3 percent slopes	8.60	5.5%	2	76.6
3545	Hobbs silt loam, channeled, frequently flooded	8.12	5.2%	5	45.9
155.83					68.7

3 fields, 218 acres in Harlan County, NE

Township/Section 2N 20W — 21, 22



Source: NRCS Soil Survey

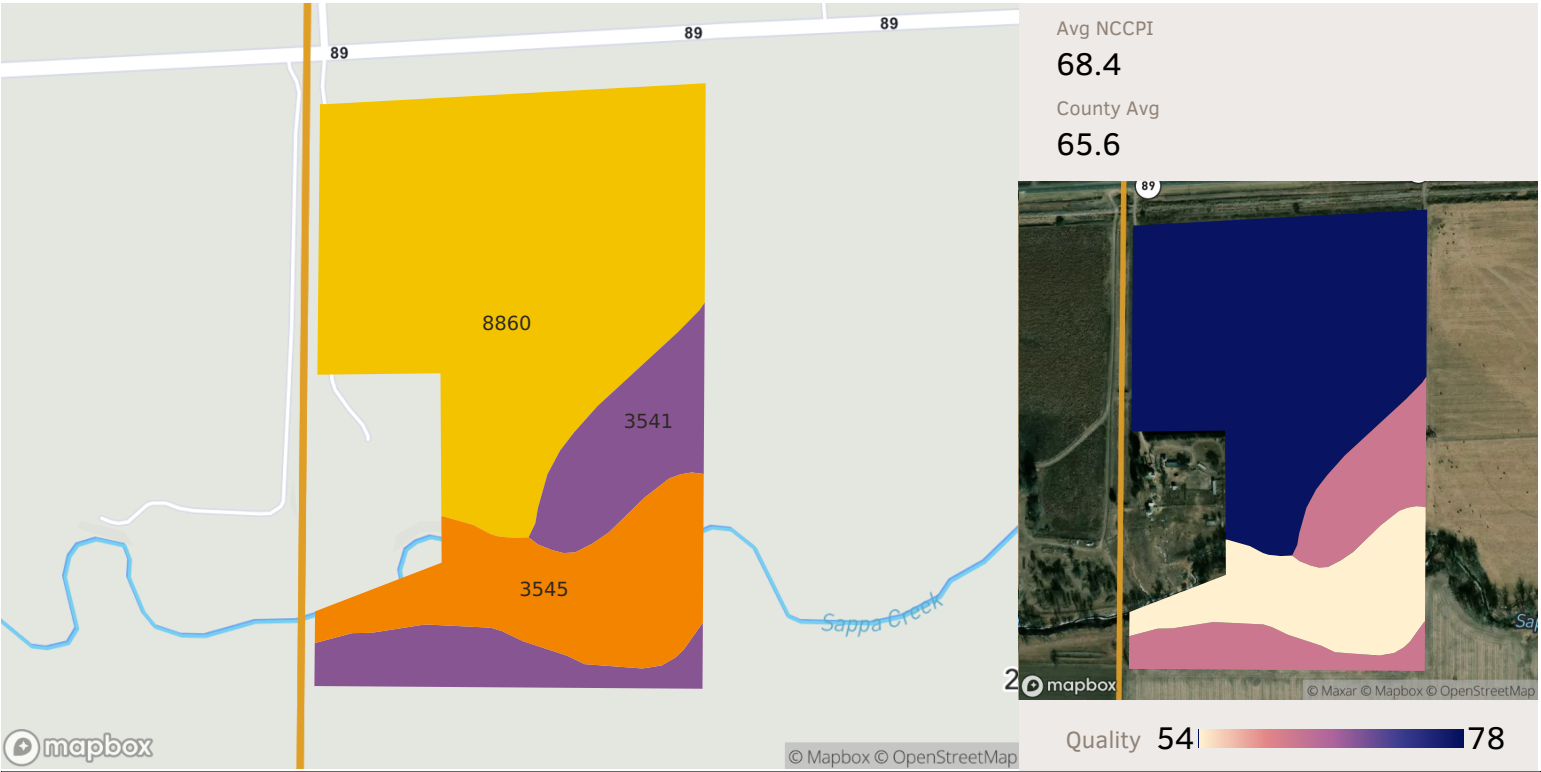
Field 2

9 ac.

	Soil Code	Soil Description	Acres	Percentage of Field	Soil Class	NCCPI
	 8860	Hord and Hall silt loams, 0 to 1 percent slopes	9.12	100.0%	2	77.1
			9.12			77.1

3 fields, 218 acres in Harlan County, NE

Township/Section 2N 20W — 21, 22



Source: NRCS Soil Survey

Field 3

53 ac.

Soil Code	Soil Description	Acres	Percentage of Field	Soil Class	NCCPI
8860	Hord and Hall silt loams, 0 to 1 percent slopes	32.94	61.9%	2	77.1
3545	Hobbs silt loam, channeled, frequently flooded	10.19	19.1%	5	45.9
3541	Hobbs and McCook silt loams, occasionally flooded	10.12	19.0%	2	62.6
53.25					68.4