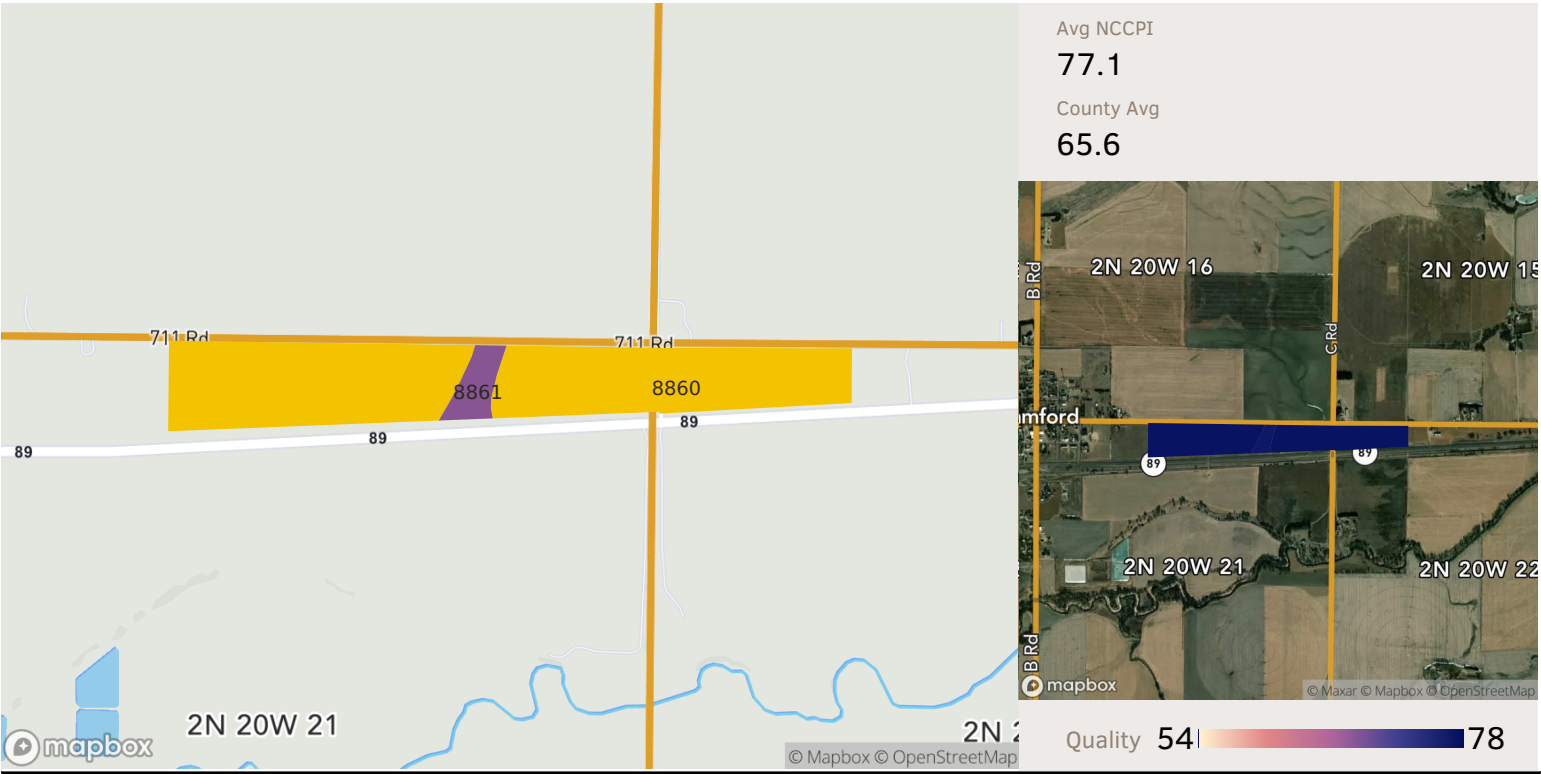


2 fields, 52 acres in Harlan County, NE

Township/Section 2N 20W — 15, 16, 21, 22



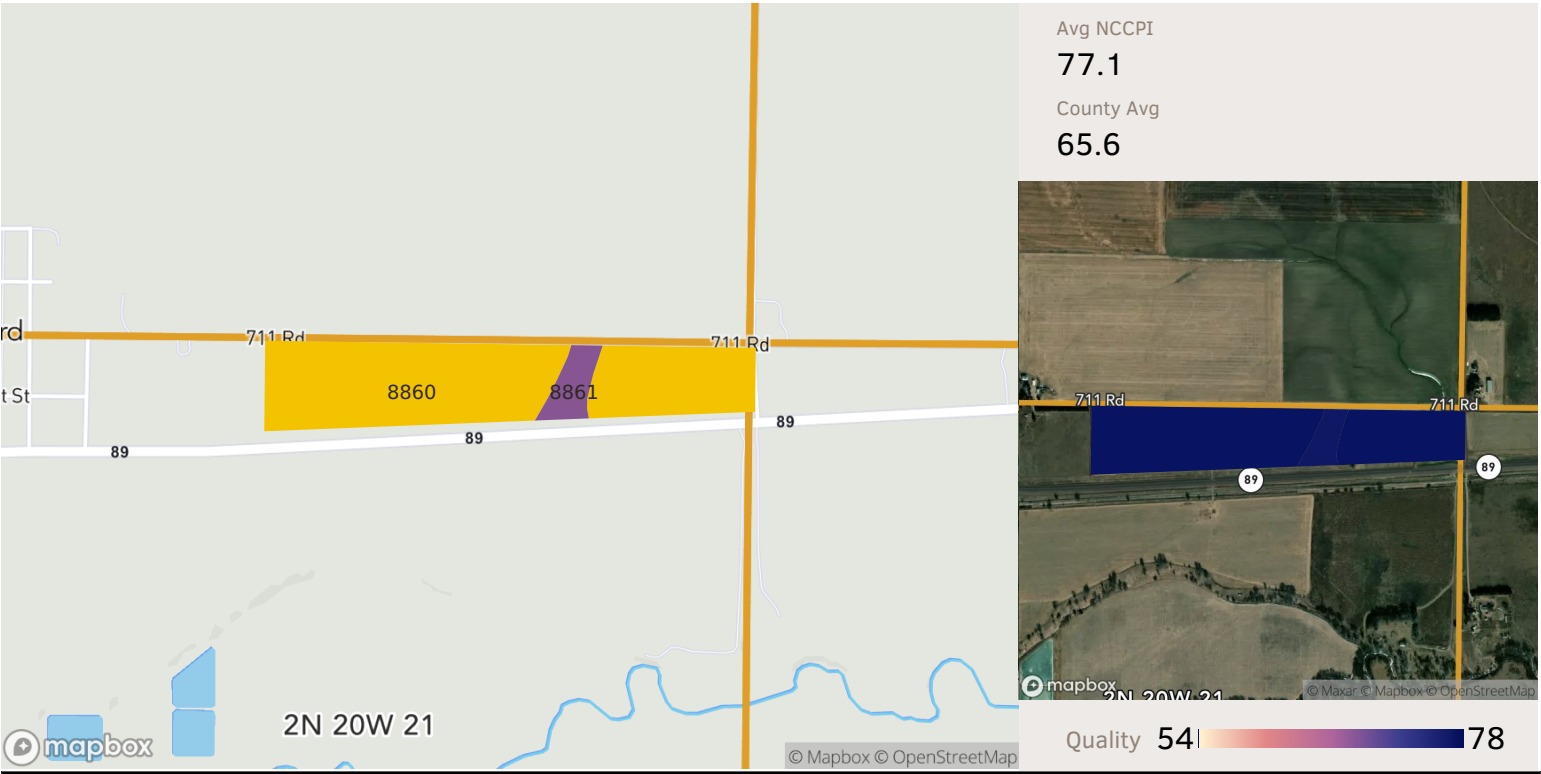
All fields

52 ac.

Soil Code	Soil Description	Acres	Percentage of Field	Soil Class	NCCPI
8860	Hord and Hall silt loams, 0 to 1 percent slopes	49.01	94.4%	2	77.1
8861	Hord and Hall silt loams, 1 to 3 percent slopes	2.91	5.6%	2	76.6
		51.92			77.1

2 fields, 52 acres in Harlan County, NE

Township/Section 2N 20W — 15, 16, 21, 22



Source: NRCS Soil Survey

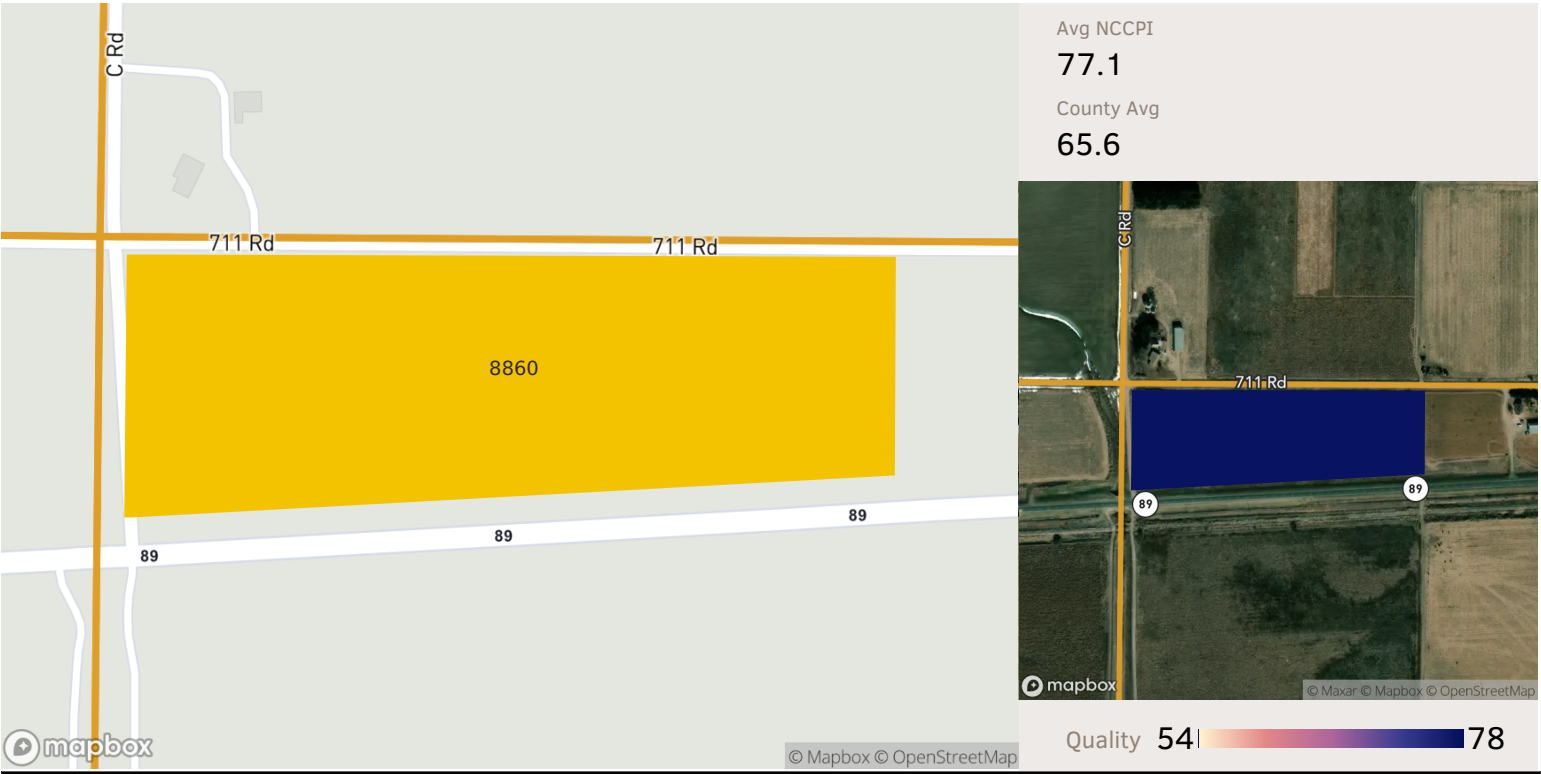
Field 1

40 ac.

Soil Code	Soil Description	Acres	Percentage of Field	Soil Class	NCCPI
8860	Hord and Hall silt loams, 0 to 1 percent slopes	36.85	92.7%	2	77.1
8861	Hord and Hall silt loams, 1 to 3 percent slopes	2.91	7.3%	2	76.6
39.76					77.1

2 fields, 52 acres in Harlan County, NE


Township/Section 2N 20W — 15, 16, 21, 22



Source: NRCS Soil Survey

Field 2

12 ac.

Soil Code	Soil Description	Acres	Percentage of Field	Soil Class	NCCPI
 8860	Hord and Hall silt loams, 0 to 1 percent slopes	12.16	100.0%	2	77.1
		12.16			77.1