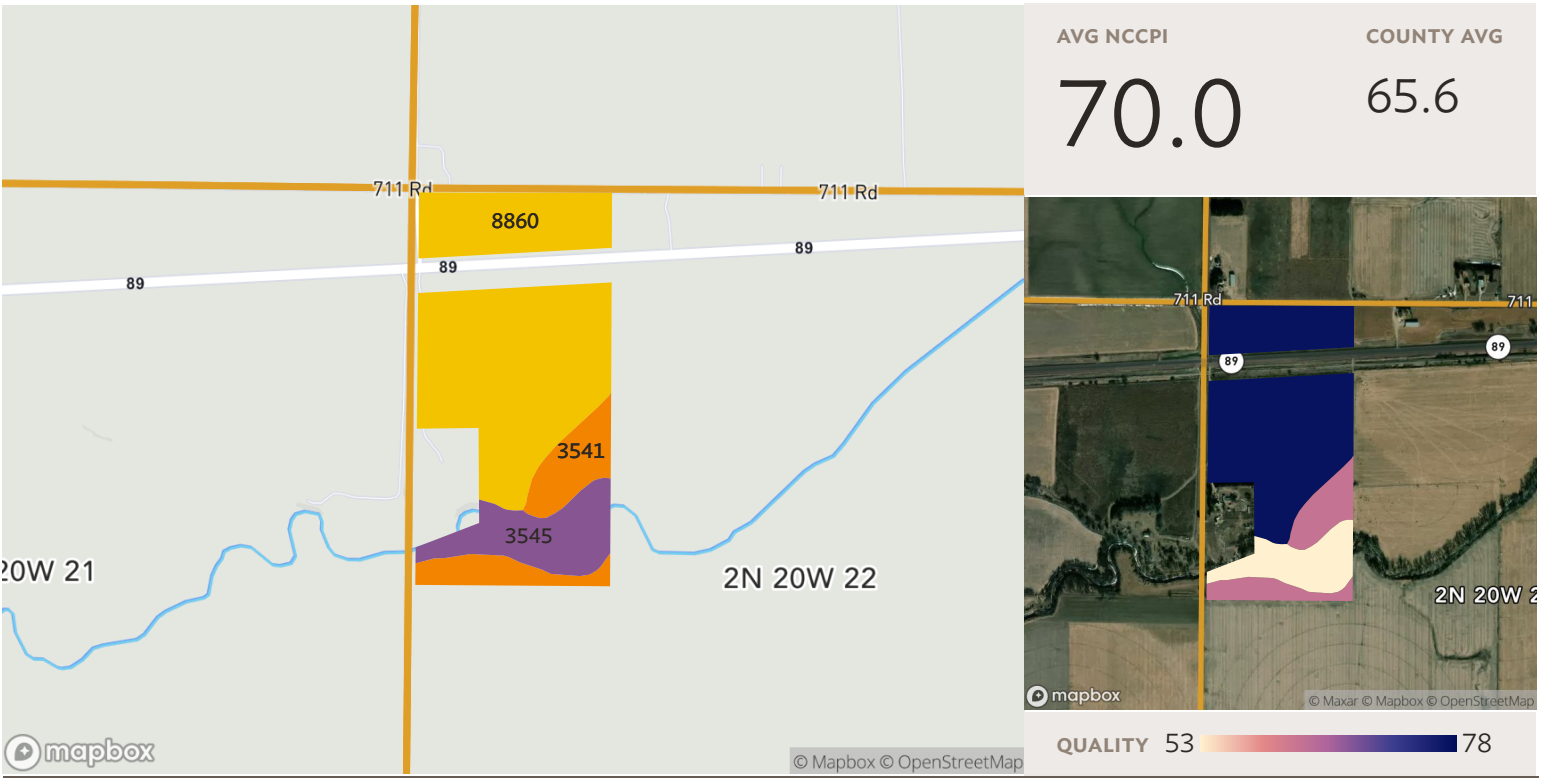


2 fields, 65 acres in Harlan County, NE

TOWNSHIP/SECTION 2N 20W – 15, 21, 22



Source: NRCS Soil Survey

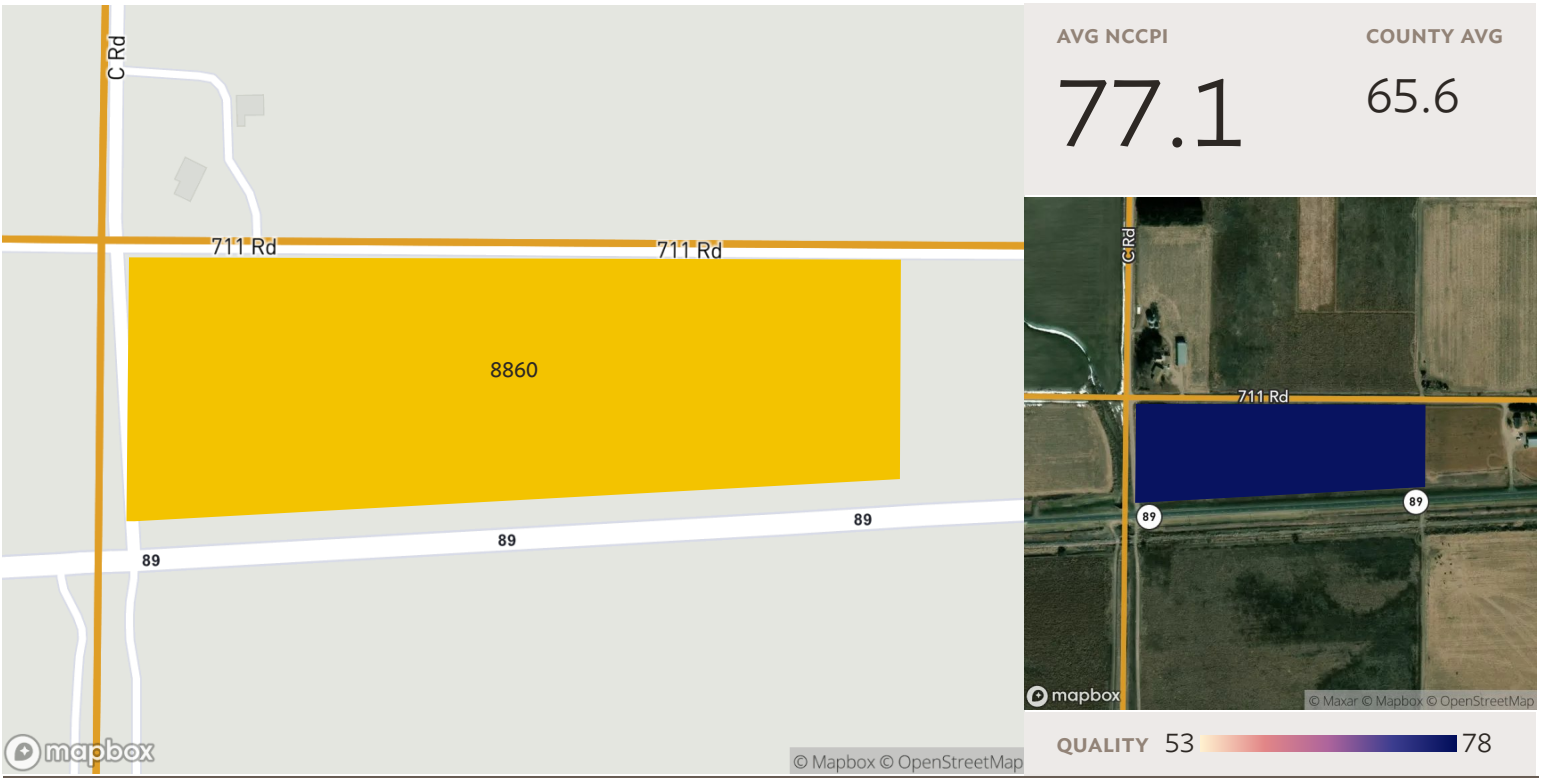
All fields

65 ac.

SOIL CODE	SOIL DESCRIPTION	ACRES	PERCENTAGE OF FIELD	SOIL CLASS	NCCPI
8860	Hord and Hall silt loams, 0 to 1 percent slopes	45.10	68.9%	2	77.1
3545	Hobbs silt loam, channeled, frequently flooded	10.19	15.6%	5	45.9
3541	Hobbs and McCook silt loams, occasionally flooded	10.12	15.5%	2	62.6
		65.41			70.0

2 fields, 65 acres in Harlan County, NE

TOWNSHIP/SECTION 2N 20W – 15, 21, 22



Field 1

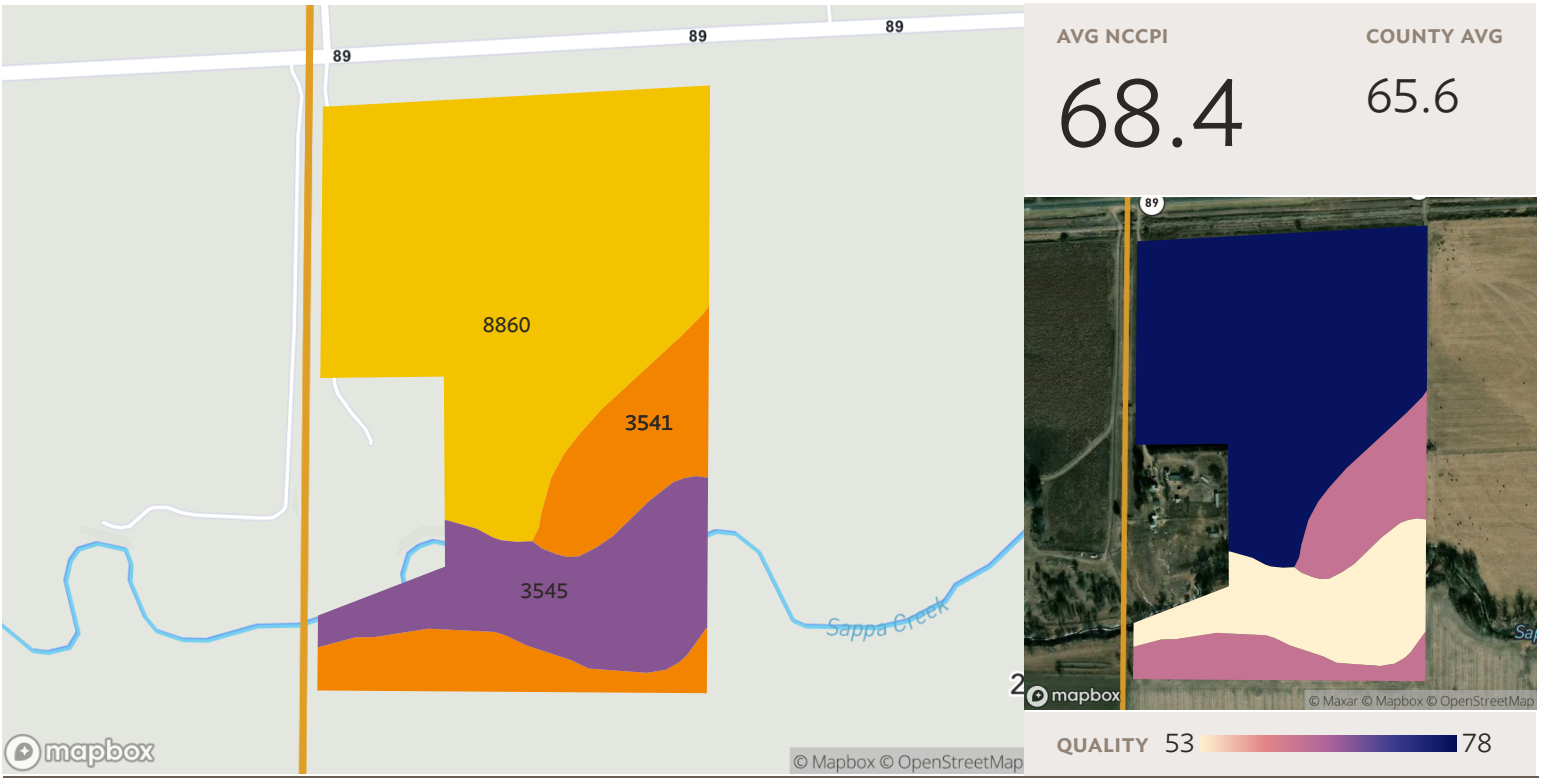
Source: NRCS Soil Survey

12 ac.

SOIL CODE	SOIL DESCRIPTION	ACRES	PERCENTAGE OF FIELD	SOIL CLASS	NCCPI
8860	Hord and Hall silt loams, 0 to 1 percent slopes	12.16	100.0%	2	77.1
		12.16			77.1

2 fields, 65 acres in Harlan County, NE

TOWNSHIP/SECTION 2N 20W – 15, 21, 22



Field 2

Source: NRCS Soil Survey

53 ac.

SOIL CODE	SOIL DESCRIPTION	ACRES	PERCENTAGE OF FIELD	SOIL CLASS	NCCPI
8860	Hord and Hall silt loams, 0 to 1 percent slopes	32.94	61.9%	2	77.1
3545	Hobbs silt loam, channeled, frequently flooded	10.19	19.1%	5	45.9
3541	Hobbs and McCook silt loams, occasionally flooded	10.12	19.0%	2	62.6
		53.25			68.4