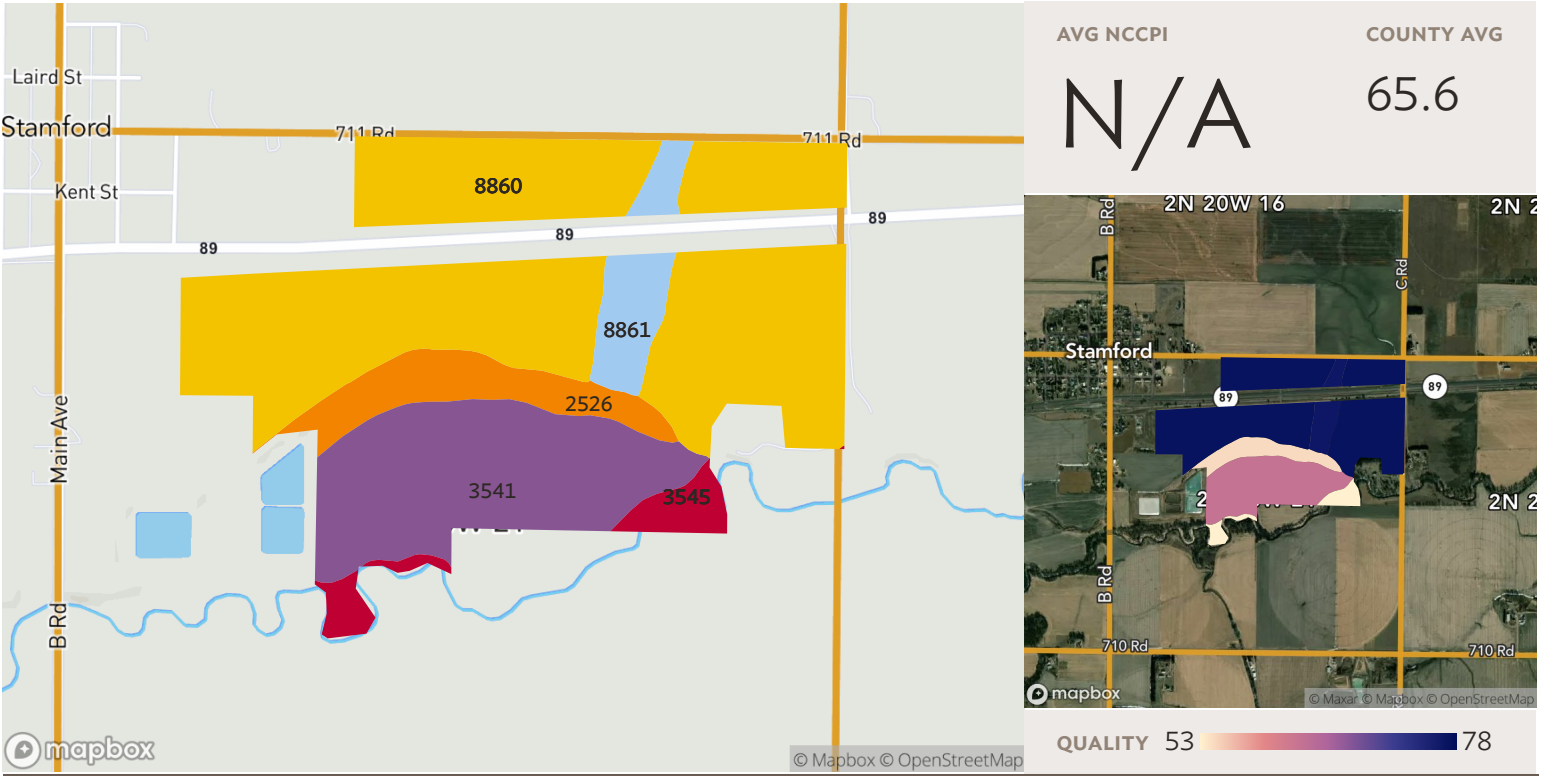


2 fields, 205 acres in Harlan County, NE

TOWNSHIP/SECTION 2N 20W – 15, 16, 21, 22



Source: NRCS Soil Survey

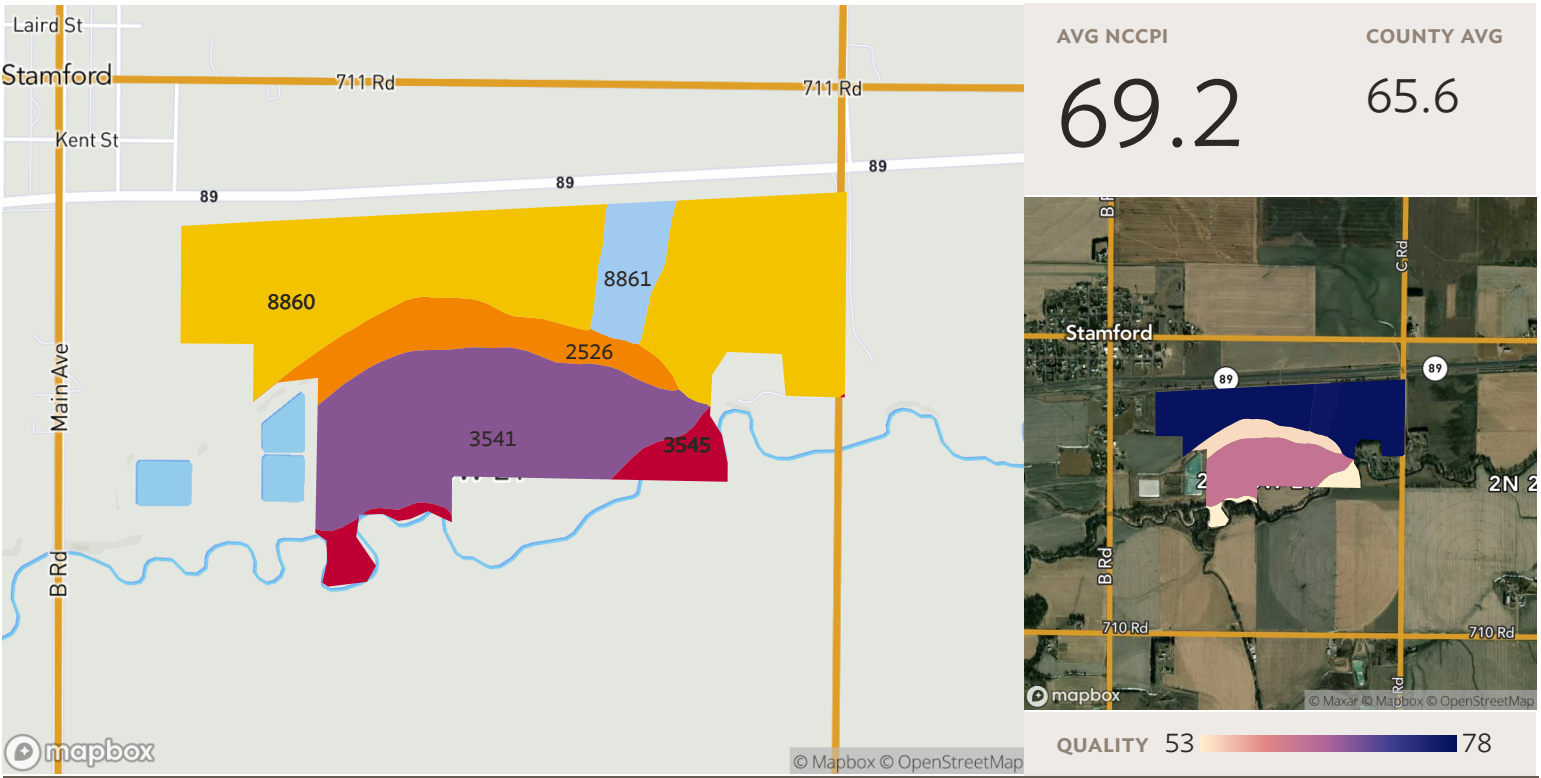
All fields

205 ac.

SOIL CODE	SOIL DESCRIPTION	ACRES	PERCENTAGE OF FIELD	SOIL CLASS	NCCPI
8860	Hord and Hall silt loams, 0 to 1 percent slopes	122.16	59.7%	2	77.1
3541	Hobbs and McCook silt loams, occasionally flooded	46.80	22.9%	2	62.6
2526	Coly and Nuckolls silt loams, 11 to 30 percent slopes, eroded	16.12	7.9%	6	54.3
8861	Hord and Hall silt loams, 1 to 3 percent slopes	11.51	5.6%	2	76.6
3545	Hobbs silt loam, channeled, frequently flooded	8.12	4.0%	5	45.9
204.71					70.7

2 fields, 205 acres in Harlan County, NE

TOWNSHIP/SECTION 2N 20W – 15, 16, 21, 22



Field 1

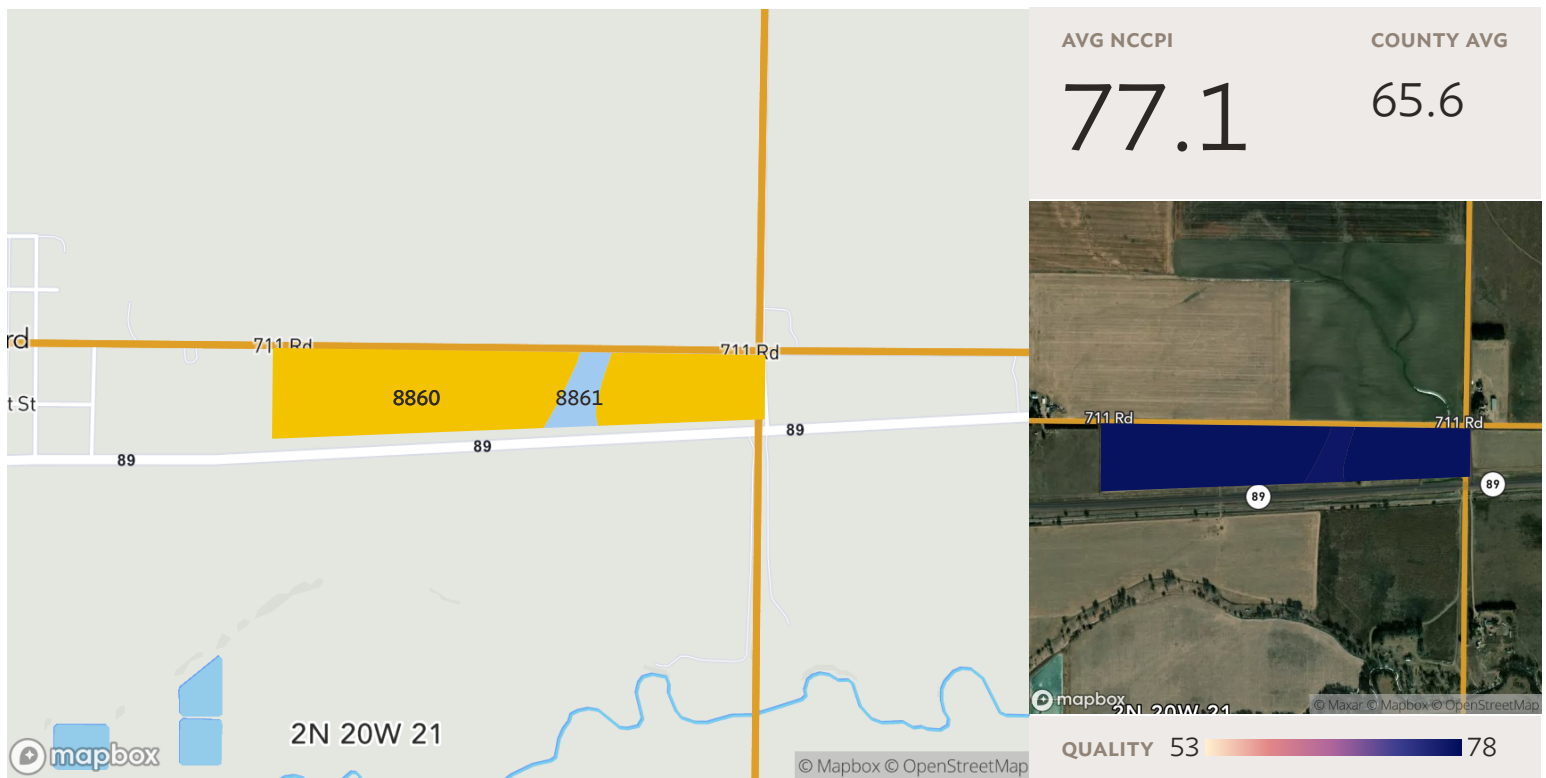
165 ac.

Source: NRCS Soil Survey

SOIL CODE	SOIL DESCRIPTION	ACRES	PERCENTAGE OF FIELD	SOIL CLASS	NCCPI
8860	Hord and Hall silt loams, 0 to 1 percent slopes	85.30	51.7%	2	77.1
3541	Hobbs and McCook silt loams, occasionally flooded	46.80	28.4%	2	62.6
2526	Coly and Nuckolls silt loams, 11 to 30 percent slopes, eroded	16.12	9.8%	6	54.3
8861	Hord and Hall silt loams, 1 to 3 percent slopes	8.60	5.2%	2	76.6
3545	Hobbs silt loam, channeled, frequently flooded	8.12	4.9%	5	45.9
164.95					69.2

2 fields, 205 acres in Harlan County, NE

TOWNSHIP/SECTION 2N 20W - 15, 16, 21, 22



Field 2

Source: NRCS Soil Survey

40 ac.

	SOIL CODE	SOIL DESCRIPTION	ACRES	PERCENTAGE OF FIELD	SOIL CLASS	NCCPI
	8860	Hord and Hall silt loams, 0 to 1 percent slopes	36.85	92.7%	2	77.1
	8861	Hord and Hall silt loams, 1 to 3 percent slopes	2.91	7.3%	2	76.6
			39.76			77.1