



**5633 S. 82ND ST.
LINCOLN, NE**



A beautiful split-level home in Southeast Lincoln.

SHANE MAUCH

Sales Associate

Shane's Cell: 308-660-5672

Email: shane@lashleyland.com

PROPERTY HIGHLIGHTS

List Price	\$339,000	\$329,000
Location	5633 S. 82nd St., Lincoln, NE 68516	
Legal Description	HARTLAND HOMES EAST 8TH ADDITION, BLOCK 3, LOT 4	
Taxes - Estimated	\$3,533.56	

Property Summary

A Beautiful Split-Level Home in Southeast Lincoln! Don't miss this well-maintained 1,526 sq.ft. split-level home featuring 3 bedrooms and fully remodeled bathrooms (2). You'll love the hardwood floors throughout the main level and appreciate the many updates completed in recent years.

Key Improvements & Updates:

- 2022: New storm door, new garage door opener, and full interior paint
- 2023: New sliding glass door, all new trim and baseboards, and new interior doors
- 2024: New LVP flooring installed in the primary bedroom
- New blinds in the kitchen, living room, and basement
- Updated light fixtures throughout
- Culligan soft water system and Nest doorbell camera stay with the home

The lower level offers a spacious additional living area - perfect for movie nights, entertaining, or hosting larger gatherings.

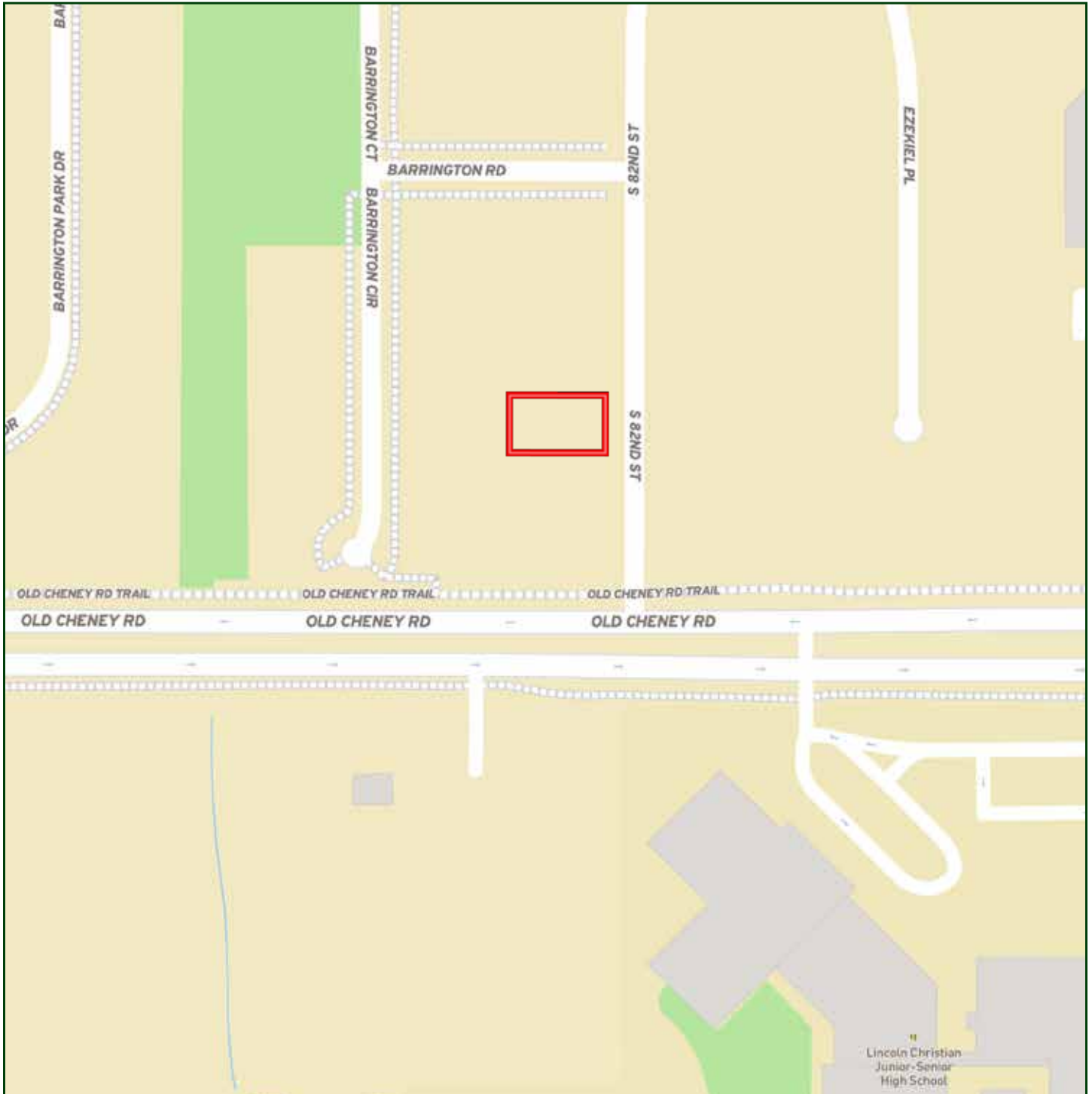
Outside, enjoy a fully fenced backyard complete with a deck and a concrete patio, ideal for relaxing or outdoor dining. An attached 2-car garage provides convenience and extra storage.

This is a fantastic turnkey opportunity in a highly desirable southeast Lincoln location. Come see it today and make this beautiful home yours!

All information herein is from sources deemed reliable, however the accuracy is not guaranteed by Lashley Land and Recreational Brokers, Inc., seller or agent. Offering is subject to error, omissions, prior sale, price change or withdrawal without notice.

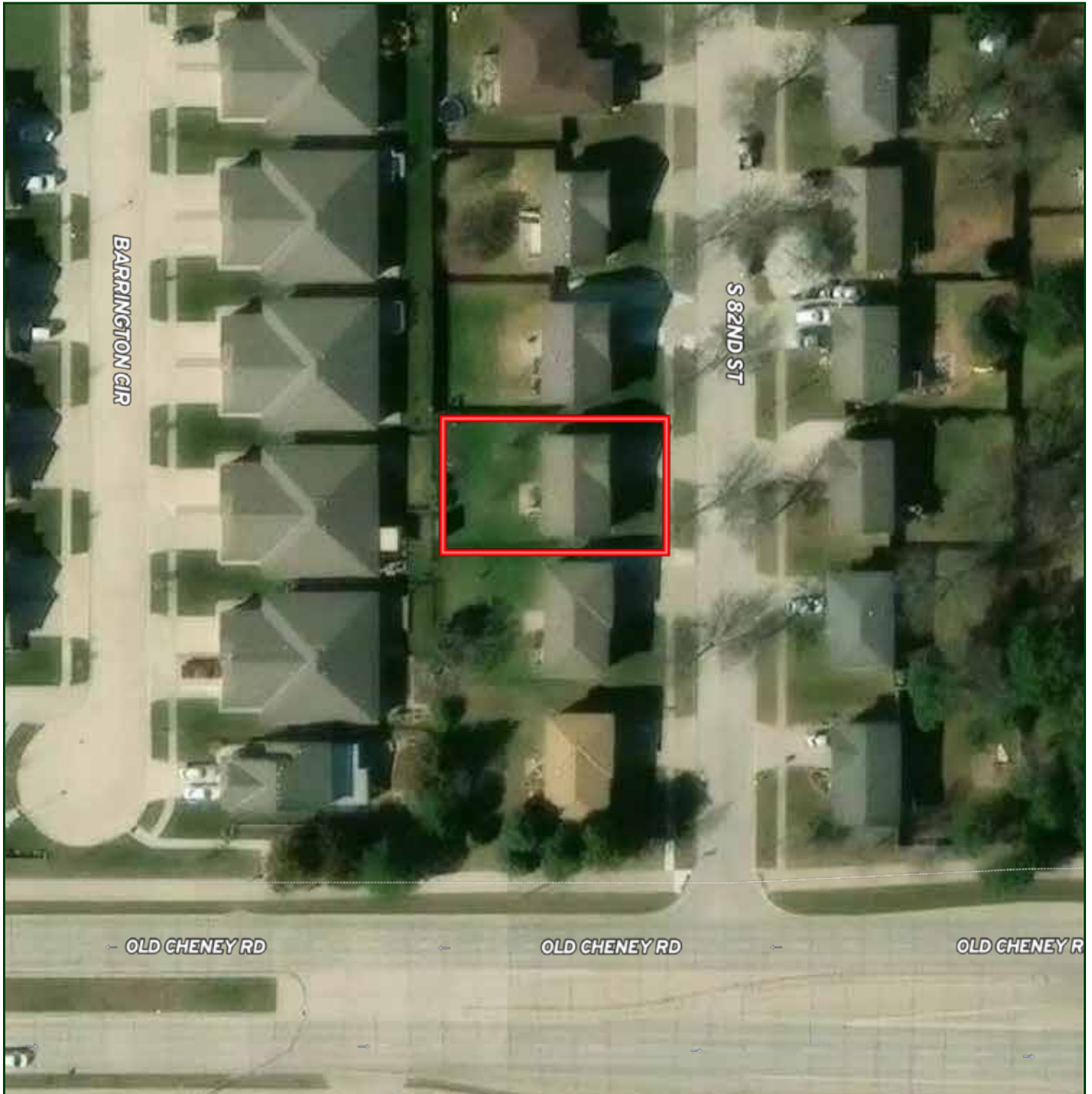
SHANE MAUCH
Sales Associate
Shane's Cell: 308-660-5672
Email: shane@lashleyland.com

LOCATION MAP



Boundary lines are estimates - Map for illustration only

AERIAL MAP



Boundary lines are estimates - Map for illustration only

SHANE MAUCH

Sales Associate

Shane's Cell: 308-660-5672

Email: shane@lashleyland.com

PROPERTY IMAGES



PROPERTY IMAGES



SHANE MAUCH
Sales Associate
Shane's Cell: 308-660-5672
Email: shane@lashleyland.com

PROPERTY IMAGES





NEBRASKA EXPERTS, NATIONAL EXPOSURE.

Contact Information

Office: 308-532-9300

Fax: 308-532-1854

Email: info@lashleyland.com

Website: LashleyLand.com

Mike Lashley, Owner|Broker

Amy Lashley-Johnston, Scott Saults, Skip Marland, Jordan Maassen, April Good, Jon Farley, Tami Timmerman-Lashley, Randy Helms, Bill Grant, Shane Mauch, Jake McQuillen, Brandi Housman, Leala Jimerson, Stephanie Miller, DeAnn Vaughn, Ann Gray, Jake Hopwood, Bryan Cabrera, Lindsey Feuerborn, Robby Uehran, and Tom Moss

Like us on Facebook
[Facebook.com/LashleyLand](https://www.facebook.com/LashleyLand)

2218 E. Walker Road • North Platte, NE 69101



SHANE MAUCH

Sales Associate

Shane's Cell: 308-660-5672

Email: shane@lashleyland.com