



**2306 WEST C ST.
NORTH PLATTE, NE**



A beautifully modernized home in the heart of North Platte.

SHANE MAUCH

Sales Associate

Shane's Cell: 308-660-5672

Email: shane@lashleyland.com

PROPERTY HIGHLIGHTS

List Price	\$229,000
Location	2306 West C St., North Platte, NE 69101
Legal Description	WESTFIELD 6TH ADD. 14 2
Taxes - Estimated	\$2,263.50

Property Summary

This move-in-ready 3-bedroom, 1.5-bath home offers 1,015 sq ft of thoughtfully updated living space with quality improvements throughout. Major upgrades include a new HVAC system (installed in 2019), new siding and exterior paint, and an underground sprinkler system.

The interior was fully renovated between 2022 and 2023, featuring new flooring, recessed lighting, and all electrical systems updated to current code. The kitchen was completely remodeled in 2023 with new cabinetry, solid surface countertops, and brand-new appliances. A privacy fence was also added in 2023.

In fall 2024, the home received a new roof with Class 3 impact-resistant shingles. Window replacement is already scheduled with a contractor to address hail damage, providing added peace of mind for the next owner. The main bathroom was fully remodeled in 2025.

Additional highlights include brand-new concrete on both the front and back patios, as well as a meticulously maintained “no-shoes” interior.

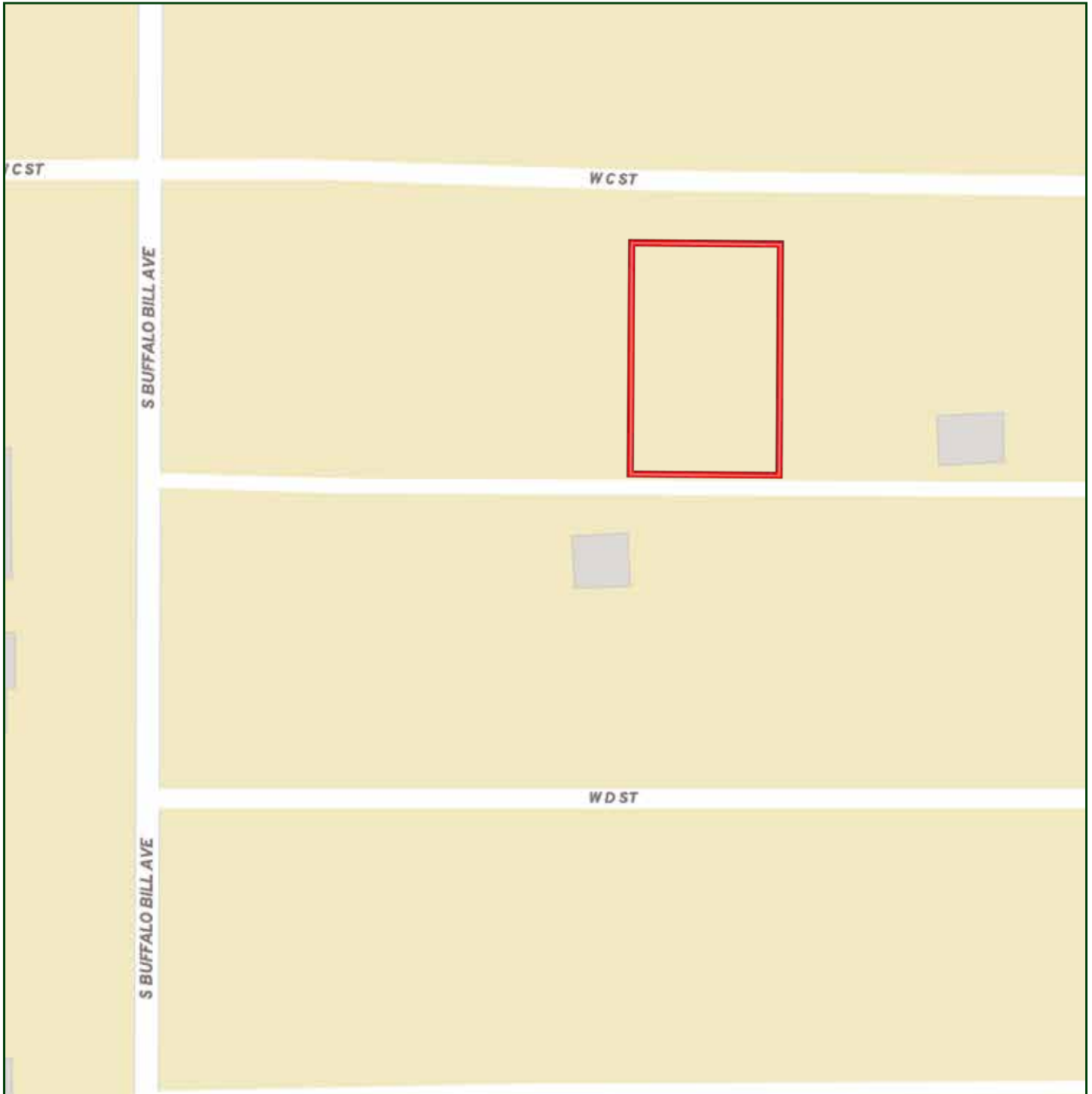
Conveniently located near Westfield Shopping Center, North Platte High School, and many local amenities - this home truly has it all.

Don't miss this opportunity - call today to schedule your private tour!

All information herein is from sources deemed reliable, however the accuracy is not guaranteed by Lashley Land and Recreational Brokers, Inc., seller or agent. Offering is subject to error, omissions, prior sale, price change or withdrawal without notice.

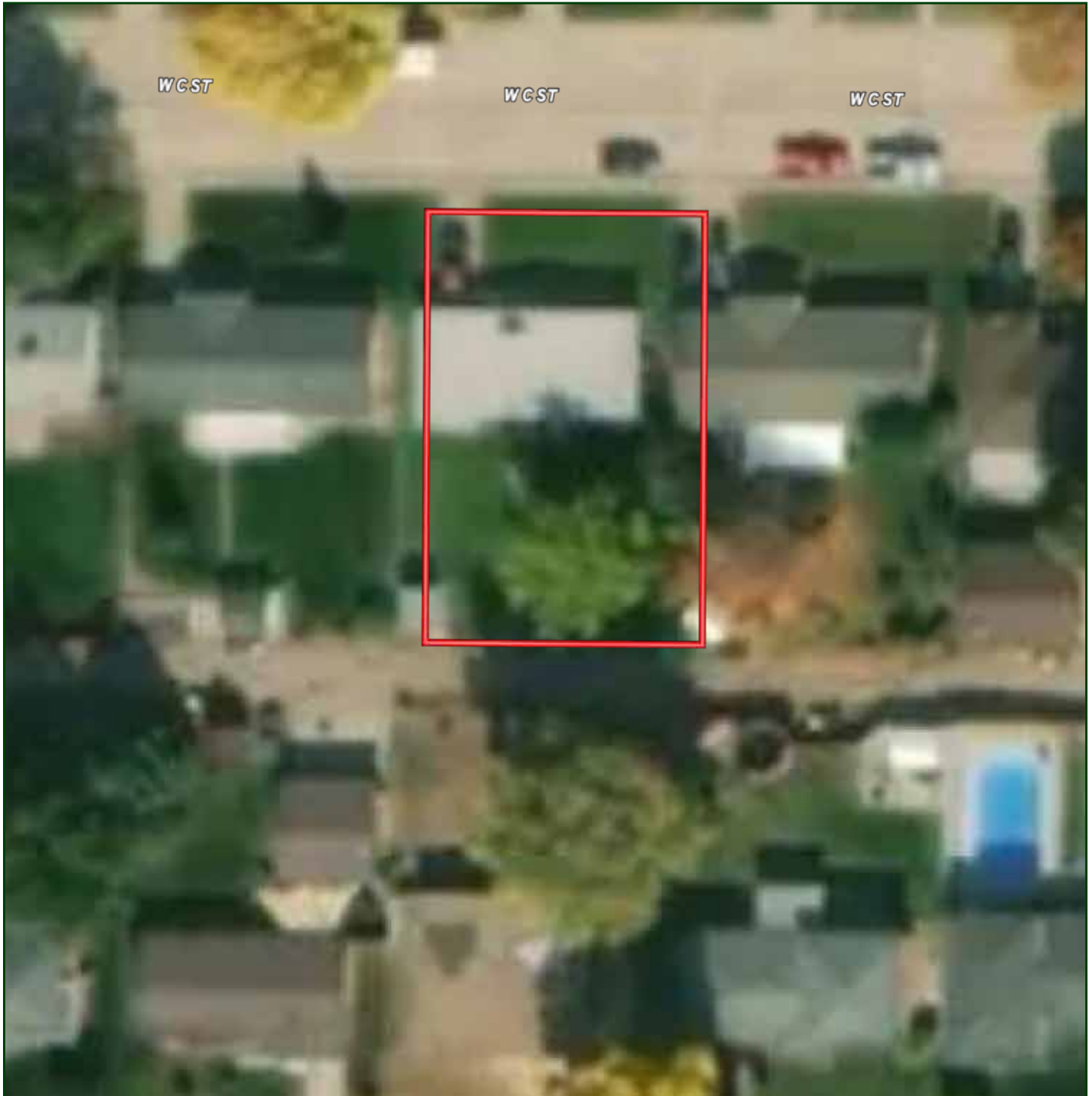
SHANE MAUCH
Sales Associate
Shane's Cell: 308-660-5672
Email: shane@lashleyland.com

LOCATION MAP



Boundary lines are estimates - Map for illustration only

AERIAL MAP



Boundary lines are estimates - Map for illustration only

SHANE MAUCH

Sales Associate

Shane's Cell: 308-660-5672

Email: shane@lashleyland.com

PROPERTY IMAGES



PROPERTY IMAGES



SHANE MAUCH
Sales Associate
Shane's Cell: 308-660-5672
Email: shane@lashleyland.com

PROPERTY IMAGES





NEBRASKA EXPERTS, NATIONAL EXPOSURE.

Contact Information

Office: 308-532-9300

Fax: 308-532-1854

Email: info@lashleyland.com

Website: LashleyLand.com

Mike Lashley, Owner|Broker

Amy Lashley-Johnston, Scott Saults, Skip Marland, Jordan Maassen, April Good, Jon Farley, Tami Timmerman-Lashley, Randy Helms, Bill Grant, Shane Mauch, Jake McQuillen, Brandi Housman, Leala Jimerson, Stephanie Miller, DeAnn Vaughn, Ann Gray, Jake Hopwood, Bryan Cabrera, Lindsey Feuerborn, Robby Uehran, and Tom Moss

Like us on Facebook
[Facebook.com/LashleyLand](https://www.facebook.com/LashleyLand)

2218 E. Walker Road • North Platte, NE 69101



SHANE MAUCH

Sales Associate

Shane's Cell: 308-660-5672

Email: shane@lashleyland.com