



**106 FREEDOM CT.
PAXTON, NE**



A beautiful country-chic retreat.

TAMI TIMMERMAN-LASHLEY

Residential Specialist

Tami's Cell: 308-660-9468

Email: tami@lashleyland.com

PROPERTY HIGHLIGHTS

List Price **\$380,000**

Location 106 Freedom Ct., Paxton, NE 69155

Legal Description

Lot 9, of the Paxton West Second Addition, an addition to the Village of Paxton, Keith County, Nebraska

Taxes - Estimated **\$3,160.48**

Property Summary

Welcome to your dream home, a perfect blend of elegance and comfort. This brand-new country chic retreat offers 2,200 square feet of beautiful living space, ideal for a family ready to move in. Inside, the home has an open floor plan filled with natural light, thanks to large windows that create a warm, inviting atmosphere. The house features four spacious bedrooms and three full baths, including a luxurious master suite and ample closet space. The newly finished basement provides additional living areas, perfect for family gatherings or personal retreats.

The home shines with stunning stone countertops and custom finishes throughout, adding a sleek, modern touch to its charming style. It's designed for entertaining, allowing for an easy flow between rooms. Outside, you have ample space to create a garden, play area, or simply enjoy the peaceful surroundings.

Situated in a friendly neighborhood, this home offers the calm of country living with the convenience of nearby parks, schools, and shops. This is more than just a house; it's a place for creating cherished memories. Make this beautiful, turnkey home yours!

All information is taken from the Keith County assessor's card and is not a guarantee or a warranty.

All information herein is from sources deemed reliable, however the accuracy is not guaranteed by Lashley Land and Recreational Brokers, Inc., seller or agent. Offering is subject to error, omissions, prior sale, price change or withdrawal without notice.

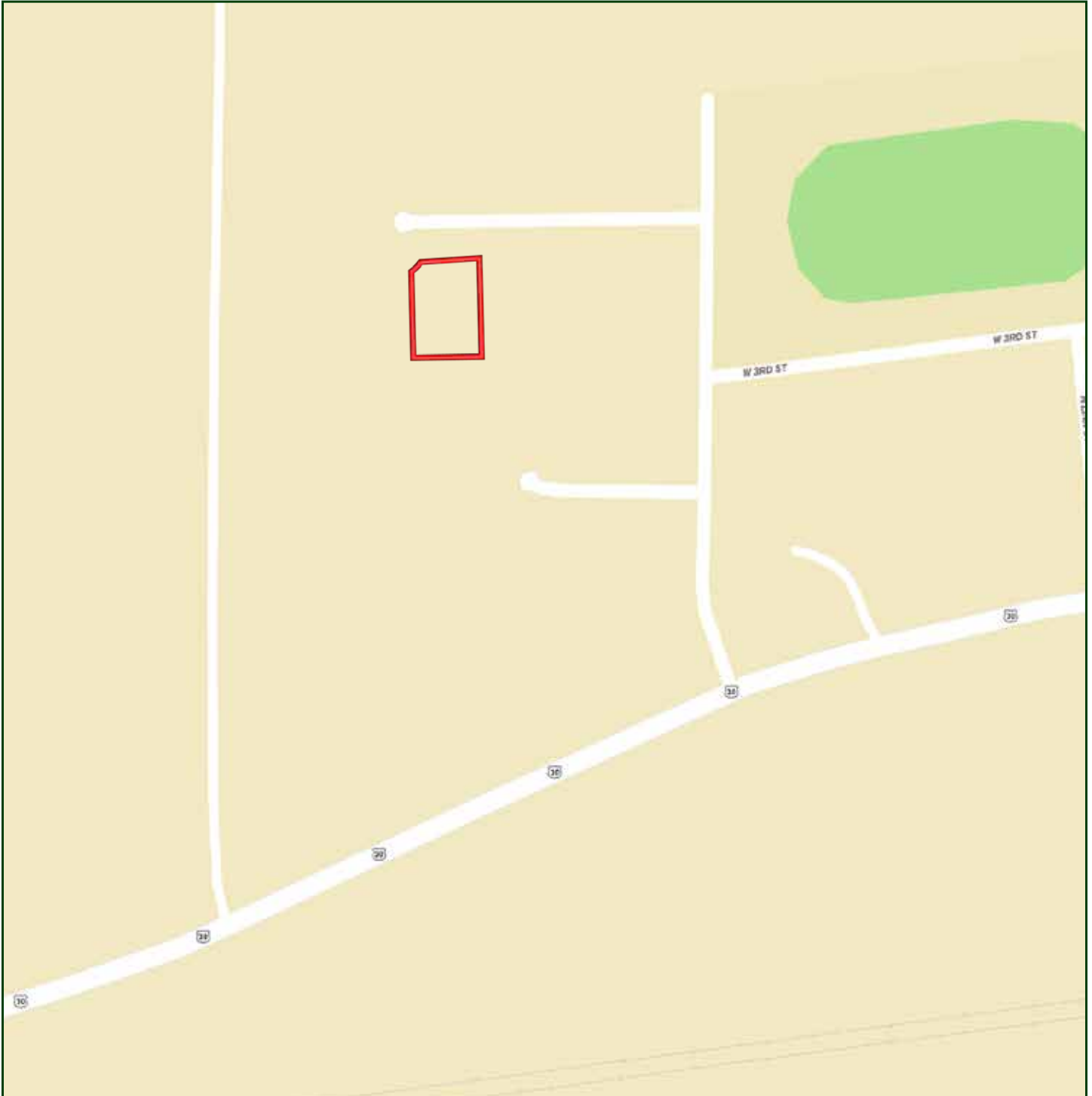
TAMI TIMMERMAN-LASHLEY

Residential Specialist

Tami's Cell: 308-660-9468

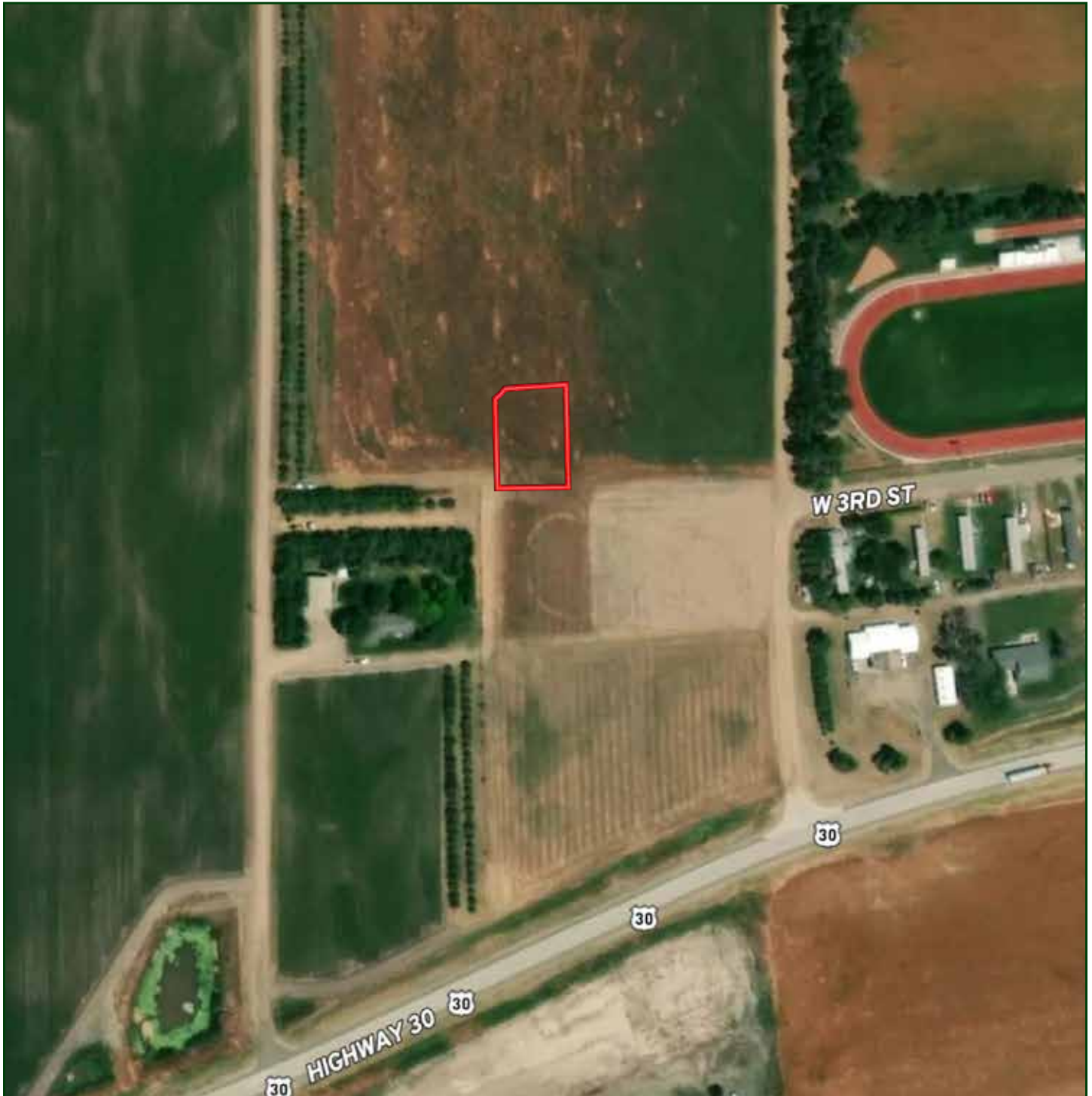
Email: tami@lashleyland.com

LOCATION MAP



Boundary lines are estimates - Map for illustration only

AERIAL MAP



Boundary lines are estimates - Map for illustration only

TAMI TIMMERMAN-LASHLEY

Residential Specialist

Tami's Cell: 308-660-9468

Email: tami@lashleyland.com

PROPERTY IMAGES



PROPERTY IMAGES



TAMI TIMMERMAN-LASHLEY

Residential Specialist

Tami's Cell: 308-660-9468

Email: tami@lashleyland.com

PROPERTY IMAGES





NEBRASKA EXPERTS, NATIONAL EXPOSURE.

Contact Information

Office: 308-532-9300

Fax: 308-532-1854

Email: info@lashleyland.com

Website: LashleyLand.com

Mike Lashley, Owner|Broker

Amy Lashley-Johnston, Scott Saults, Skip Marland, Jordan Maassen, April Good, Jon Farley, Tami Timmerman-Lashley, Randy Helms, Bill Grant, Shane Mauch, Jake McQuillen, Brandi Housman, Leala Jimerson, Stephanie Miller, DeAnn Vaughn, Ann Gray, Jake Hopwood, Bryan Cabrera, Lindsey Feuerborn, Robby Uehran, and Tom Moss

Like us on Facebook
[Facebook.com/LashleyLand](https://www.facebook.com/LashleyLand)

2218 E. Walker Road • North Platte, NE 69101



TAMI TIMMERMAN-LASHLEY

Residential Specialist

Tami's Cell: 308-660-9468

Email: tami@lashleyland.com