



**2600 W. 4TH ST.
NORTH PLATTE, NE**



A cozy 3 bedroom home with a fenced backyard.

TAMI TIMMERMAN-LASHLEY

Residential Specialist

Tami's Cell: 308-660-9468

Email: tami@lashleyland.com

PROPERTY HIGHLIGHTS

List Price**\$130,000****Location**

2600 W. 4th St., North Platte, NE 69101

Legal Description

Lot 4, Block 2 of Sanford's Addition to North Platte, Lincoln County, Nebraska.

Taxes - Estimated**\$1,956.03****Property Summary**

Discover this cozy home, ideal for first-time buyers or those looking to downsize. It offers three nice size bedrooms with original hardwood floors, ready for your personal touch. The open living area is perfect for customization, and the kitchen has great potential.

Located near shopping, downtown, and schools, this home combines convenience with the opportunity to create something special. It also includes a one-car detached garage for added storage or parking.

There is a covered patio area great for relaxing with a cup of coffee or a family gathering. Fully fenced backyard perfect for pets. There is currently a garden area that could easily be the site for a future shop or second garage.

This 900+ sq. ft. home is sold "as is, where is," offering you a blank canvas. Don't miss your chance to turn this house into your perfect home! Contact me to schedule a viewing or for more details!

All information herein is from sources deemed reliable, however the accuracy is not guaranteed by Lashley Land and Recreational Brokers, Inc., seller or agent. Offering is subject to error, omissions, prior sale, price change or withdrawal without notice.

TAMI TIMMERMAN-LASHLEY

Residential Specialist

Tami's Cell: 308-660-9468

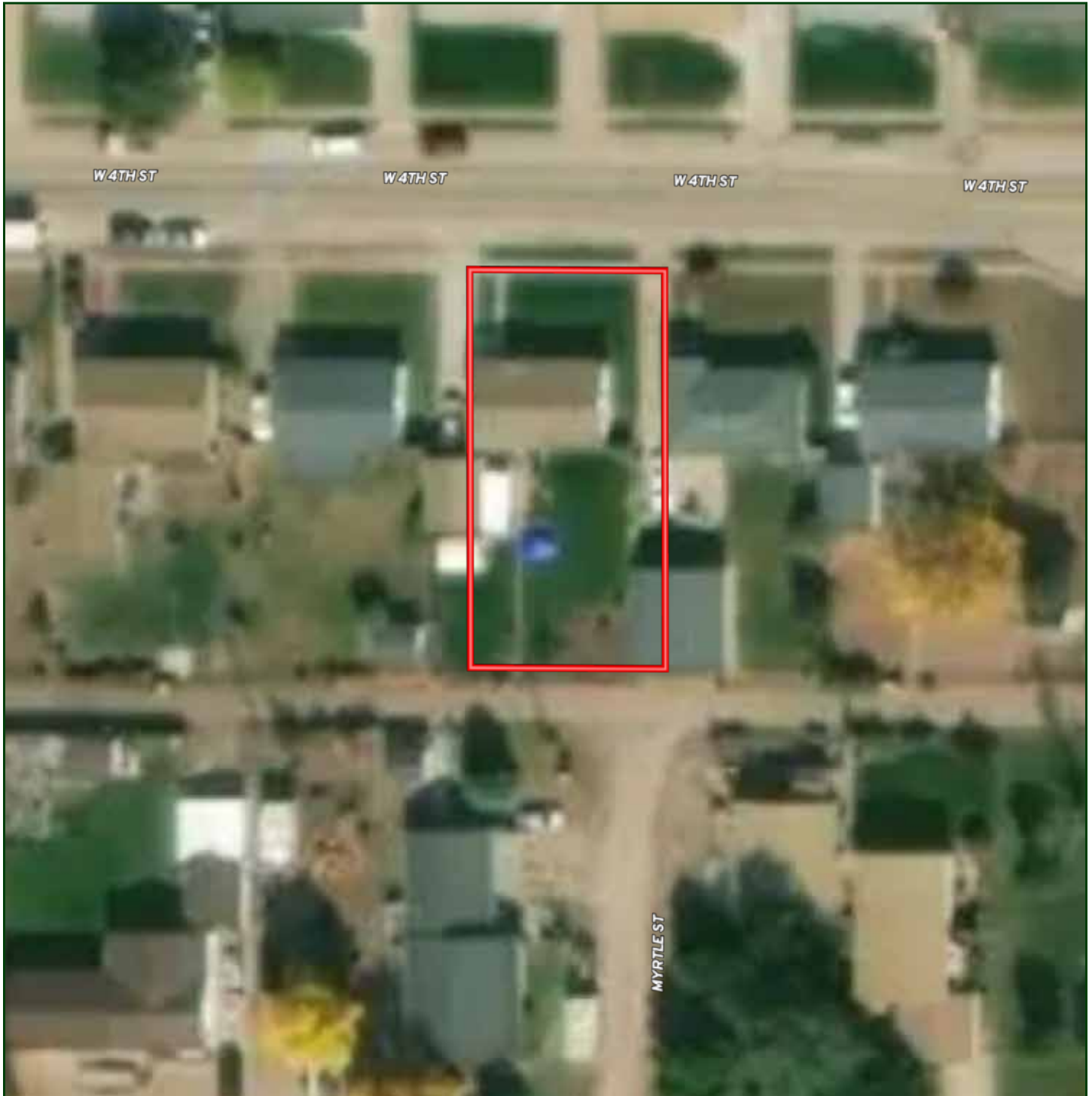
Email: tami@lashleyland.com

LOCATION MAP



Boundary lines are estimates - Map for illustration only

AERIAL MAP



Boundary lines are estimates - Map for illustration only

TAMI TIMMERMAN-LASHLEY

Residential Specialist

Tami's Cell: 308-660-9468

Email: tami@lashleyland.com

PROPERTY IMAGES



PROPERTY IMAGES



TAMI TIMMERMAN-LASHLEY

Residential Specialist

Tami's Cell: 308-660-9468

Email: tami@lashleyland.com

PROPERTY IMAGES





NEBRASKA EXPERTS, NATIONAL EXPOSURE.

Contact Information

Office: 308-532-9300

Fax: 308-532-1854

Email: info@lashleyland.com

Website: LashleyLand.com

Mike Lashley, Owner|Broker

Amy Lashley-Johnston, Scott Saults, Skip Marland, Jordan Maassen, April Good, Jon Farley, Tami Timmerman-Lashley, Randy Helms, Bill Grant, Shane Mauch, Jake McQuillen, Brandi Housman, Leala Jimerson, Stephanie Miller, DeAnn Vaughn, Ann Gray, Jake Hopwood, Bryan Cabrera, Lindsey Feuerborn, Robby Uehran, and Tom Moss

Like us on Facebook
[Facebook.com/LashleyLand](https://www.facebook.com/LashleyLand)

2218 E. Walker Road • North Platte, NE 69101



TAMI TIMMERMAN-LASHLEY

Residential Specialist

Tami's Cell: 308-660-9468

Email: tami@lashleyland.com