



**420 S. REYNOLDS AVE.
NORTH PLATTE, NE**



A move-in ready home with 2 beds and 2 baths.

TAMI TIMMERMAN-LASHLEY

Residential Specialist

Tami's Cell: 308-660-9468

Email: tami@lashleyland.com

PROPERTY HIGHLIGHTS

List Price**\$185,000****Location**

420 S. Reynolds Ave., North Platte, NE

Legal Description

Lot 11, Block 7, McDonald Place Addition to North Platte, Lincoln County, Nebraska

Taxes - Estimated**\$2,382.05****Property Summary**

Welcome to this move in ready bungalow-style home, close to Orabella Park in North Platte, Nebraska. Featuring two spacious bedrooms and two updated full baths—one on each level—with over 1,300 square feet of living space, the residence includes two full living rooms, there is natural light from newer windows throughout. There is an oversized, detached one-car garage, providing ample storage and parking. The property is fully fenced with vinyl privacy fence, with a private outdoor deck for relaxation.

Located only minutes from shopping and dining options, you'll find convenient access to the Westfield Shopping Center and quality schools, making it ideal for families and professionals alike. The nearby Orabella Park offers a beautiful setting for outdoor activities. Make this delightful bungalow your new home and enjoy all the benefits of this lovely neighborhood.

Call for your private tour today!

All information is taken from the Lincoln County assessors card and is not a guarantee or in no way warranty.

All information herein is from sources deemed reliable, however the accuracy is not guaranteed by Lashley Land and Recreational Brokers, Inc., seller or agent. Offering is subject to error, omissions, prior sale, price change or withdrawal without notice.

TAMI TIMMERMAN-LASHLEY

Residential Specialist

Tami's Cell: 308-660-9468

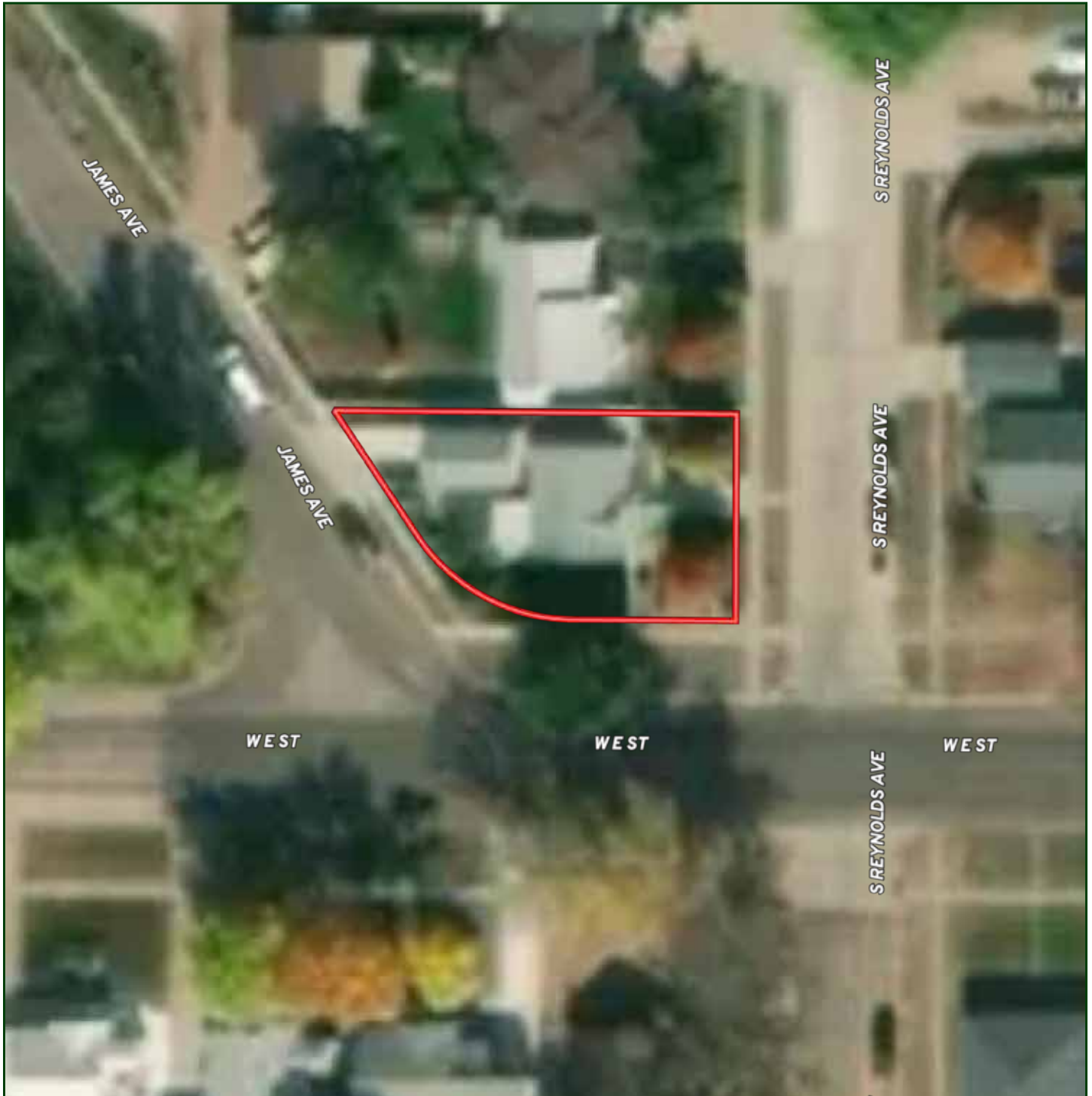
Email: tami@lashleyland.com

LOCATION MAP



Boundary lines are estimates - Map for illustration only

AERIAL MAP



Boundary lines are estimates - Map for illustration only

TAMI TIMMERMAN-LASHLEY

Residential Specialist

Tami's Cell: 308-660-9468

Email: tami@lashleyland.com

PROPERTY IMAGES



PROPERTY IMAGES



TAMI TIMMERMAN-LASHLEY

Residential Specialist

Tami's Cell: 308-660-9468

Email: tami@lashleyland.com

PROPERTY IMAGES





NEBRASKA EXPERTS, NATIONAL EXPOSURE.

Contact Information

Office: 308-532-9300

Fax: 308-532-1854

Email: info@lashleyland.com

Website: LashleyLand.com

Mike Lashley, Owner|Broker

Amy Lashley-Johnston, Scott Saults, Skip Marland, Jordan Maassen, April Good, Jon Farley, Tami Timmerman-Lashley, Randy Helms, Bill Grant, Shane Mauch, Jake McQuillen, Brandi Housman, Leala Jimerson, Stephanie Miller, DeAnn Vaughn, Ann Gray, Jake Hopwood, Bryan Cabrera, Lindsey Feuerborn, Robby Uehran, and Tom Moss

Like us on Facebook
[Facebook.com/LashleyLand](https://www.facebook.com/LashleyLand)

2218 E. Walker Road • North Platte, NE 69101



TAMI TIMMERMAN-LASHLEY

Residential Specialist

Tami's Cell: 308-660-9468

Email: tami@lashleyland.com