



2421 STATE FARM RD. NORTH PLATTE, NE



A charming farmhouse on 3± acres.

TAMI TIMMERMAN-LASHLEY

Residential Specialist

Tami's Cell: 308-660-9468

Email: tami@lashleyland.com

PROPERTY HIGHLIGHTS

List Price**\$600,000****Location**

2421 State Farm Rd., North Platte, NE 69101

Acres

3±

Buyers and Sellers acknowledge all represented acres are based on the County Assessor's records. Buyers acknowledge that they are purchasing a legal description, and acknowledge that fences may or may not be on the property lines.

Taxes - Estimated**\$2,842.47****Property Summary**

This charming farmhouse is perfect for country living. It sits on 3 acres and features 3 bedrooms, 2.5 bathrooms, recently updated full baths, and an attached garage, just over 2,000 square feet. The property also includes mature trees, room for horses, and additional buildings like a smaller outbuilding and another that are great for storage and an open-sided machine shed, adding versatility. Plus, there's a spacious 70 x 40 Quonset with a cement floor, ideal for storage equipment or a workshop. The basement is ready for your personal touch to create more living space. Buyers can explore purchasing an additional acre, with negotiable terms. Buyers and sellers will split the cost of the survey. There's even potential for commercial use, but buyer would have to get approval from the city planning and zoning. Schedule a private tour to see all the possibilities this property offers. Note: Information is from the Lincoln County assessor's card and is not guaranteed.

All information herein is from sources deemed reliable, however the accuracy is not guaranteed by Lashley Land and Recreational Brokers, Inc., seller or agent. Offering is subject to error, omissions, prior sale, price change or withdrawal without notice.

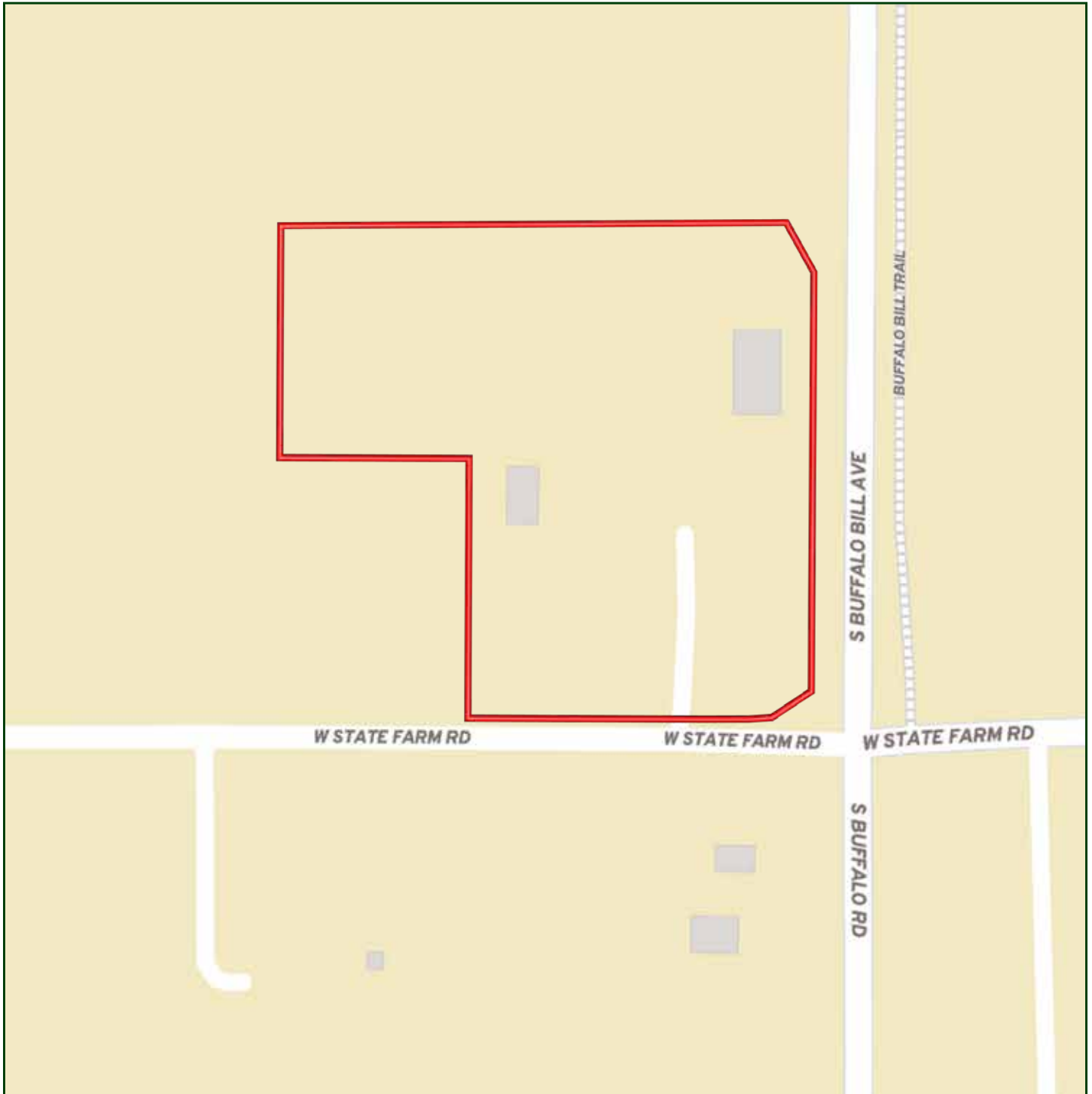
TAMI TIMMERMAN-LASHLEY

Residential Specialist

Tami's Cell: 308-660-9468

Email: tami@lashleyland.com

LOCATION MAP



Boundary lines are estimates - Map for illustration only

AERIAL MAP



Boundary lines are estimates - Map for illustration only

TAMI TIMMERMAN-LASHLEY

Residential Specialist

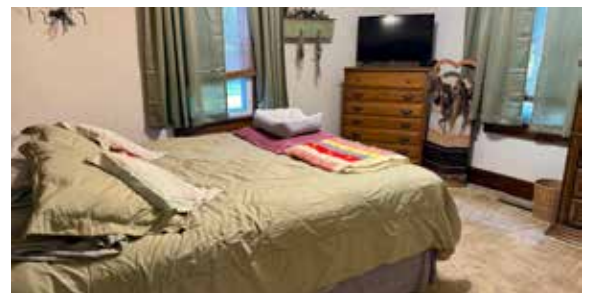
Tami's Cell: 308-660-9468

Email: tami@lashleyland.com

PROPERTY IMAGES



PROPERTY IMAGES



TAMI TIMMERMAN-LASHLEY
Residential Specialist
Tami's Cell: 308-660-9468
Email: tami@lashleyland.com

PROPERTY IMAGES





NEBRASKA EXPERTS, NATIONAL EXPOSURE.

Contact Information

Office: 308-532-9300

Fax: 308-532-1854

Email: info@lashleyland.com

Website: LashleyLand.com

Mike Lashley, Owner|Broker

Amy Lashley-Johnston, Scott Saults, Skip Marland, Jordan Maassen, April Good, Jon Farley, Tami Timmerman-Lashley, Randy Helms, Bill Grant, Shane Mauch, Jake McQuillen, Brandi Housman, Leala Jimerson, Stephanie Miller, DeAnn Vaughn, Ann Gray, Jake Hopwood, Bryan Cabrera, Lindsey Feuerborn, Robby Uehran, and Tom Moss

Like us on Facebook
[Facebook.com/LashleyLand](https://www.facebook.com/LashleyLand)

2218 E. Walker Road • North Platte, NE 69101



TAMI TIMMERMAN-LASHLEY

Residential Specialist

Tami's Cell: 308-660-9468

Email: tami@lashleyland.com