



**710 LINDEN ST.
SUTHERLAND, NE**



A beautifully renovated 2 bedroom home.

SHANE MAUCH

Sales Associate

Shane's Cell: 308-660-5672

Email: shane@lashleyland.com

PROPERTY HIGHLIGHTS

List Price**\$80,000****Location**

710 Linden St., Sutherland, NE 69165

Legal Description

SHAW SUB. (OF CO. CLERKS S. L. 6 CLARKSON W. 55' S1/2 4) LOT 1 .20A

Taxes - Estimated**\$698.56****Property Summary**

Charming renovated 2-bedroom home in the heart of Sutherland, NE.

Discover this beautifully updated 2-bedroom, 1-bathroom home located in the Village of Sutherland. Boasting a complete interior renovation, this move-in-ready gem features brand-new electrical, updated plumbing, two new mini-split units, fresh siding, and a durable metal roof for long-lasting peace of mind.

Situated on a generously sized lot, there's plenty of room to add a garage or create your ideal backyard space

Don't miss your chance to own this stylish and affordable home!

Call today to schedule your private tour! This one won't last long!

All information herein is from sources deemed reliable, however the accuracy is not guaranteed by Lashley Land and Recreational Brokers, Inc., seller or agent. Offering is subject to error, omissions, prior sale, price change or withdrawal without notice.

SHANE MAUCH

Sales Associate

Shane's Cell: 308-660-5672

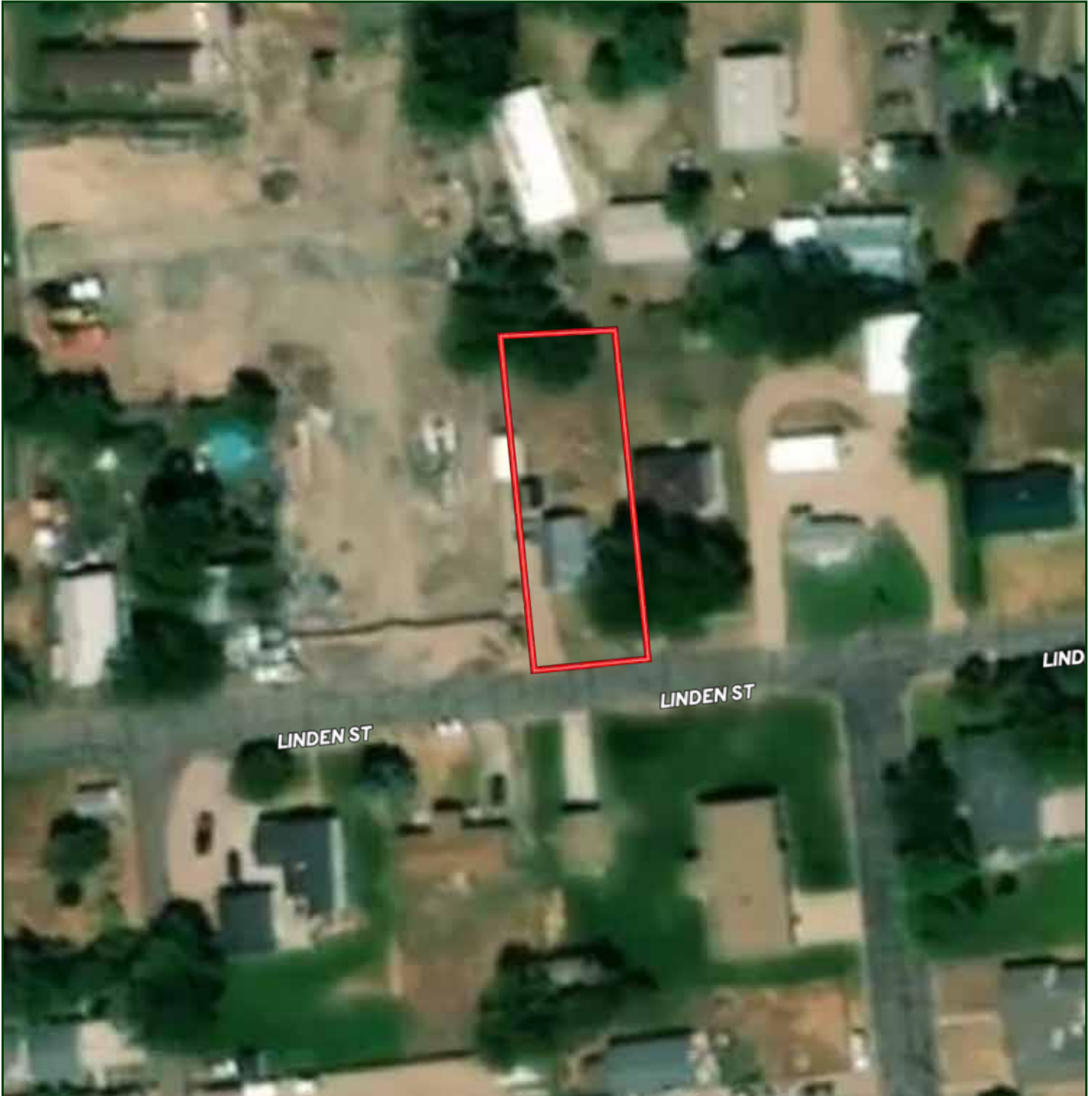
Email: shane@lashleyland.com

LOCATION MAP



Boundary lines are estimates - Map for illustration only

AERIAL MAP



Boundary lines are estimates - Map for illustration only

SHANE MAUCH

Sales Associate

Shane's Cell: 308-660-5672

Email: shane@lashleyland.com

PROPERTY IMAGES



PROPERTY IMAGES



SHANE MAUCH
Sales Associate
Shane's Cell: 308-660-5672
Email: shane@lashleyland.com

PROPERTY IMAGES





NEBRASKA EXPERTS, NATIONAL EXPOSURE.

Contact Information

Office: 308-532-9300

Fax: 308-532-1854

Email: info@lashleyland.com

Website: LashleyLand.com

Mike Lashley, Owner|Broker

Amy Lashley-Johnston, Scott Saults, Skip Marland, Jordan Maassen, April Good, Jon Farley, Tami Timmerman-Lashley, Randy Helms, Bill Grant, Shane Mauch, Jake McQuillen, Brandi Housman, Leala Jimerson, Stephanie Miller, DeAnn Vaughn, Ann Gray, Jake Hopwood, Bryan Cabrera, Lindsey Feuerborn, Robby Uehran, and Tom Moss

Like us on Facebook
[Facebook.com/LashleyLand](https://www.facebook.com/LashleyLand)

2218 E. Walker Road • North Platte, NE 69101



SHANE MAUCH

Sales Associate

Shane's Cell: 308-660-5672

Email: shane@lashleyland.com