



**6568 E. TRAIL RIDGE RD.  
NORTH PLATTE, NE**



A dreamy country acreage with a 5 bedroom home sitting on 15.9± acres.

**BRANDI HOUSMAN**

Sales Associate

Brandi's Cell: 308-568-9435

Email: [brandi@lashleyland.com](mailto:brandi@lashleyland.com)

# PROPERTY HIGHLIGHTS

**List Price****\$625,000****Location**

6568 E. Trail Ridge Rd., North Platte, NE

**Acres**

15.99±

Buyers and Sellers acknowledge all represented acres are based on the County Assessor's records. Buyers acknowledge that they are purchasing a legal description, and acknowledge that fences may or may not be on the property lines.

**Taxes - Estimated****\$4,205.22****Property Summary**

This IMMACULATE 5 bedroom, 3 bathroom 3,452 sq ft all electric home sits on a dreamy 15.99 acres tucked back on a private drive! The large covered front porch faces west for all the beautiful Nebraska sunsets. This home features hardwood floors in the kitchen and dining room as well as a double kitchen island and a cooktop. The kitchen, dining and living room are all open concept and great for entertaining. There are 2 large bedrooms with large closets on the main floor, a large bathroom as well as the primary with an ensuite and walk in closet. The basement boasts ample room for entertaining as well as 2 large bedrooms with great closets and an additional room as well. The basement's open space has endless possibilities for a second living room area, kids/ game room and even room for exercise equipment. The walk out basement leads to a concrete slab and grass yard outside and UGS surrounding the home. The entire house has Pella windows with built in blinds to allow in all the natural light living out in the country has to offer. Just behind the house is the detached 30x54 pole barn that also has a fully insulated storage room built inside as well as a back room for additional storage. This home has new siding and a new Class 4 shingle roof for insurance savings. Paved roads all the way to Trail Ridge Road make for country living that is easily accessible. This property is truly one of a kind and a MUST SEE!

**Outbuildings:**

54x30 metal building

All information herein is from sources deemed reliable, however the accuracy is not guaranteed by Lashley Land and Recreational Brokers, Inc., seller or agent. Offering is subject to error, omissions, prior sale, price change or withdrawal without notice.

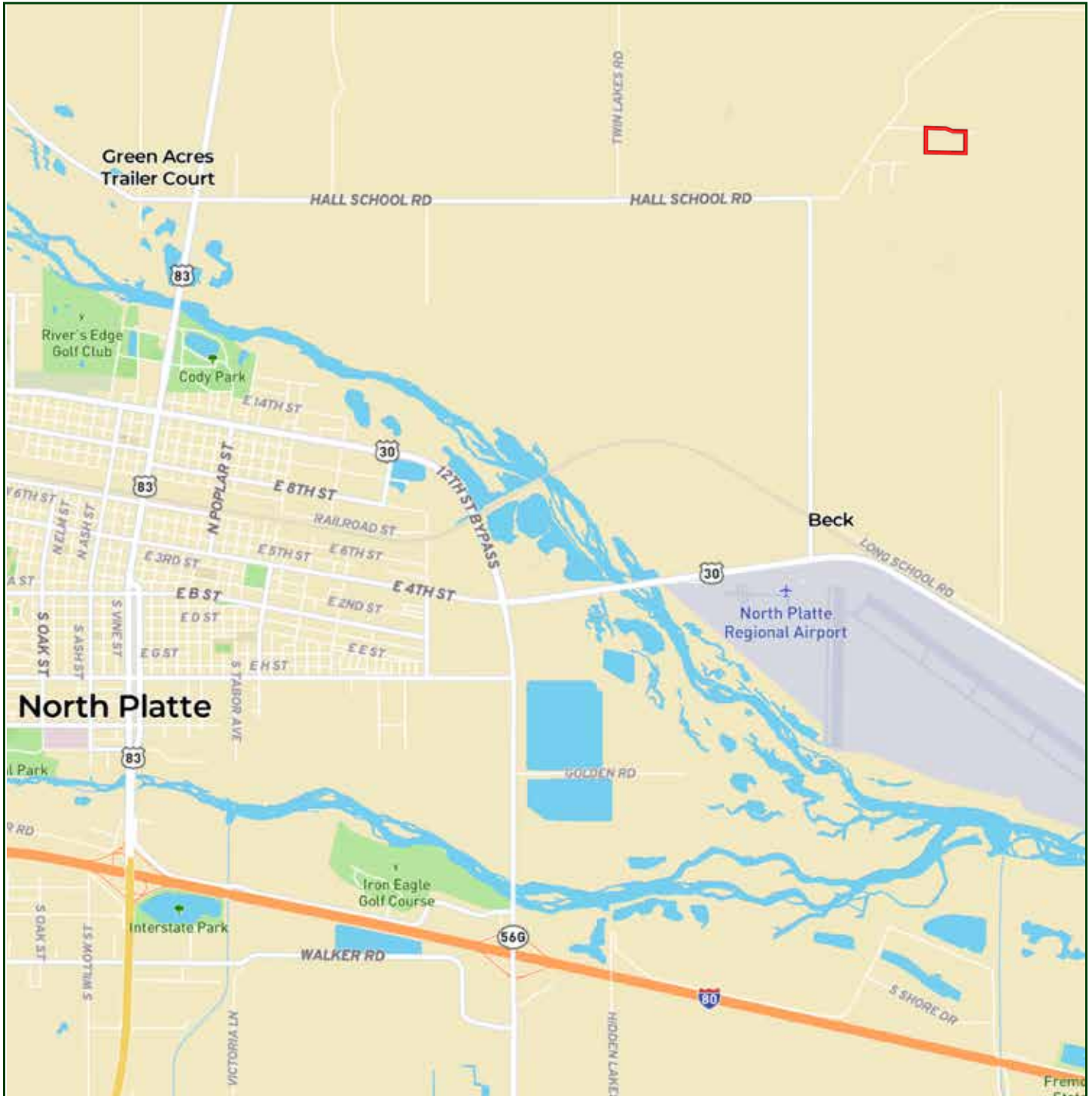
**BRANDI HOUSMAN**

Sales Associate

Brandi's Cell: 308-568-9435

Email: brandi@lashleyland.com

# LOCATION MAP



Boundary lines are estimates - Map for illustration only



# AERIAL MAP



**Boundary lines are estimates - Map for illustration only**

**BRANDI HOUSMAN**  
Sales Associate  
Brandi's Cell: 308-568-9435  
Email: [brandi@lashleyland.com](mailto:brandi@lashleyland.com)

# PROPERTY IMAGES





# PROPERTY IMAGES



BRANDI HOUSMAN  
Sales Associate  
Brandi's Cell: 308-568-9435  
Email: [brandi@lashleyland.com](mailto:brandi@lashleyland.com)

# PROPERTY IMAGES







## NEBRASKA EXPERTS, NATIONAL EXPOSURE.

### Contact Information

Office: 308-532-9300

Fax: 308-532-1854

Email: [info@lashleyland.com](mailto:info@lashleyland.com)

Website: [LashleyLand.com](http://LashleyLand.com)

### Mike Lashley, Owner|Broker

Amy Lashley-Johnston, Scott Saults, Skip Marland, Jordan Maassen, April Good, Jon Farley, Tami Timmerman-Lashley, Randy Helms, Bill Grant, Shane Mauch, Jake McQuillen, Brandi Housman, Leala Jimerson, Stephanie Miller, DeAnn Vaughn, Ann Gray, Jake Hopwood, Bryan Cabrera, Lindsey Feuerborn, Robby Uehran, and Tom Moss

Like us on Facebook  
[Facebook.com/LashleyLand](https://www.facebook.com/LashleyLand)

2218 E. Walker Road • North Platte, NE 69101



## BRANDI HOUSMAN

Sales Associate

Brandi's Cell: 308-568-9435

Email: [brandi@lashleyland.com](mailto:brandi@lashleyland.com)