



**703 S. EASTMAN
NORTH PLATTE, NE**



A four bedroom home with modern updates.

TAMI TIMMERMAN-LASHLEY

Residential Specialist

Tami's Cell: 308-660-9468

Email: tami@lashleyland.com

PROPERTY HIGHLIGHTS

List Price

~~\$265,000~~

\$245,000

Location

703 South Eastman Ave., North Platte, NE 69101

Legal Description

Lot 5, Block 2, Matson Addition to North Platte, Lincoln County, Nebraska.

Taxes - Estimated

\$2,945.74

Property Summary

Welcome to this charming story-and-a-half home, offering the perfect mix of comfort and convenience. With over 1,600 square feet, it features four bedrooms and three full baths, providing plenty of space for family and guests. The large eat-in kitchen is a chef's delight, newly updated with modern appliances, and perfect for meals or entertaining. A craft room offers a versatile space for hobbies or projects.

Step outside to a spacious patio off the kitchen, ideal for barbecues or relaxing outdoors. The two-car detached garage, plus extra parking in front, ensures ample space for vehicles and visitors. Located close to schools and shopping, this home is perfectly situated for families seeking convenience and community. Don't miss your chance to make this inviting home yours!

All information has taken from the Lincoln County assessor's card and is not guaranteed or is in any way warranty.

All information herein is from sources deemed reliable, however the accuracy is not guaranteed by Lashley Land and Recreational Brokers, Inc., seller or agent. Offering is subject to error, omissions, prior sale, price change or withdrawal without notice.

TAMI TIMMERMAN-LASHLEY

Residential Specialist

Tami's Cell: 308-660-9468

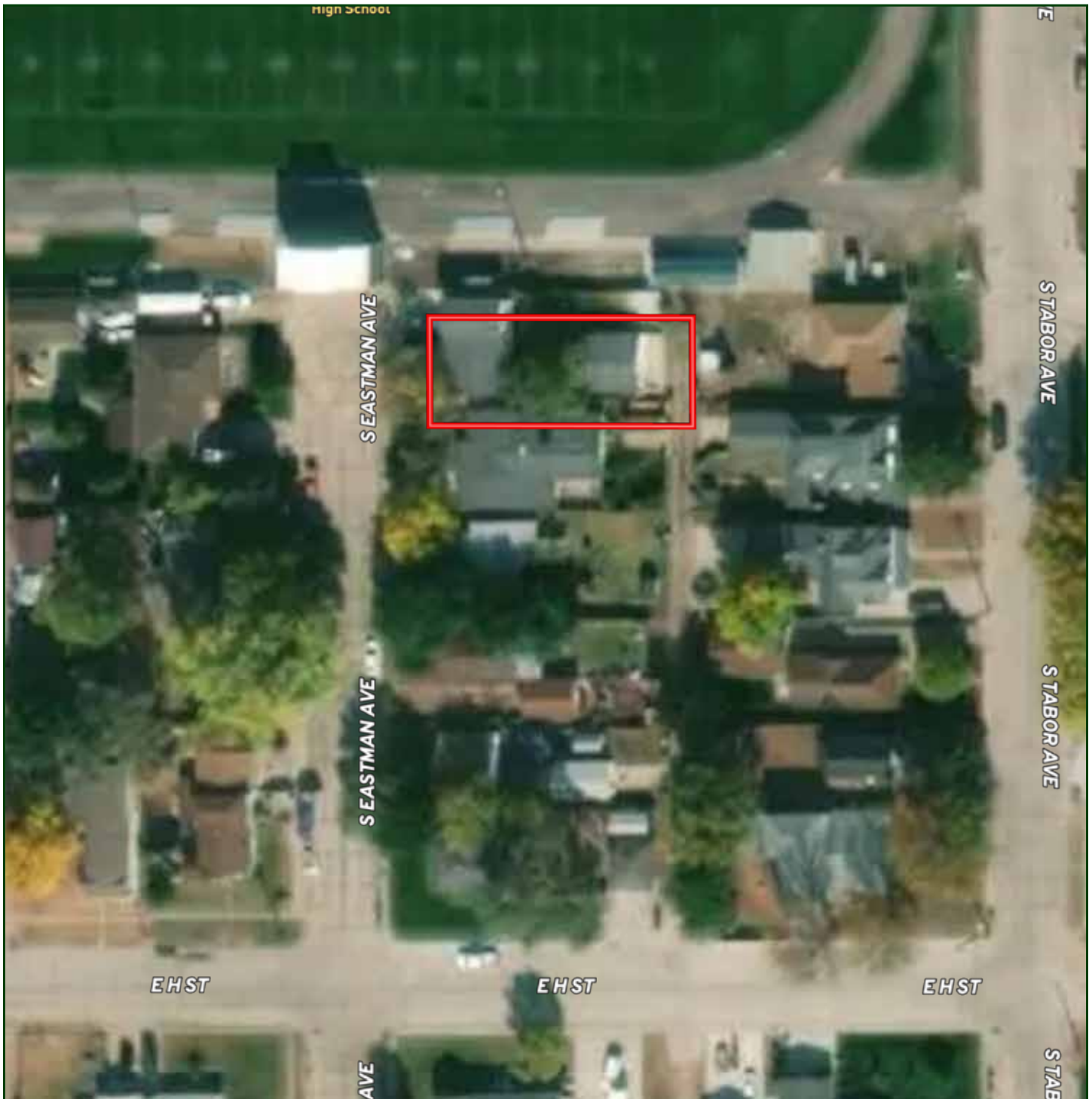
Email: tami@lashleyland.com

LOCATION MAP



Boundary lines are estimates - Map for illustration only

AERIAL MAP



Boundary lines are estimates - Map for illustration only

TAMI TIMMERMAN-LASHLEY

Residential Specialist

Tami's Cell: 308-660-9468

Email: tami@lashleyland.com

PROPERTY IMAGES



PROPERTY IMAGES



TAMI TIMMERMAN-LASHLEY

Residential Specialist

Tami's Cell: 308-660-9468

Email: tami@lashleyland.com

PROPERTY IMAGES





NEBRASKA EXPERTS, NATIONAL EXPOSURE.

Contact Information

Office: 308-532-9300

Fax: 308-532-1854

Email: info@lashleyland.com

Website: LashleyLand.com

Mike Lashley, Owner|Broker

Amy Lashley-Johnston, Scott Saults, Skip Marland, Jordan Maassen, April Good, Jon Farley, Tami Timmerman-Lashley, Randy Helms, Bill Grant, Shane Mauch, Jake McQuillen, Brandi Housman, Leala Jimerson, Stephanie Miller, DeAnn Vaughn, Ann Gray, Jake Hopwood, Bryan Cabrera, Lindsey Feuerborn, Robby Uehran, and Tom Moss

Like us on Facebook
[Facebook.com/LashleyLand](https://www.facebook.com/LashleyLand)

2218 E. Walker Road • North Platte, NE 69101



TAMI TIMMERMAN-LASHLEY

Residential Specialist

Tami's Cell: 308-660-9468

Email: tami@lashleyland.com