



**321 DIXIE AVE.
NORTH PLATTE, NE**



A move-in ready 3 bedroom home.

TAMI TIMMERMAN-LASHLEY

Residential Specialist

Tami's Cell: 308-660-9468

Email: tami@lashleyland.com

PROPERTY HIGHLIGHTS

List Price

~~\$240,000~~

\$230,000

Location

321 Dixie Ave., North Platte, NE

Legal Description

Lot 1, E. & J. Subdivision of part of Block 6, Betzacres, North Platte, Lincoln County, Nebraska.

Taxes - Estimated

\$2,650.52

Property Summary

Welcome to this move in ready home! This all-brick home offers over 1,400 square feet of living space with three bedrooms and an updated bathroom and Kitchen as well as some new flooring and newer carpet in the living areas. Enjoy two living areas, a cozy fireplace with wood beam accents, and the convenience of new appliances. Close to shopping and schools, and minutes from downtown.

Outside, you'll find a large backyard with a privacy fence and underground sprinklers—perfect for gatherings. The home also boasts a new roof, a two-car detached garage, and an extra storage shed.

Call for your private tour today!

All information has been taken from the Lincoln County assessor's card and is not guaranteed or no way a warranty

Ready to see for yourself? Schedule a visit today!

All information herein is from sources deemed reliable, however the accuracy is not guaranteed by Lashley Land and Recreational Brokers, Inc., seller or agent. Offering is subject to error, omissions, prior sale, price change or withdrawal without notice.

TAMI TIMMERMAN-LASHLEY

Residential Specialist

Tami's Cell: 308-660-9468

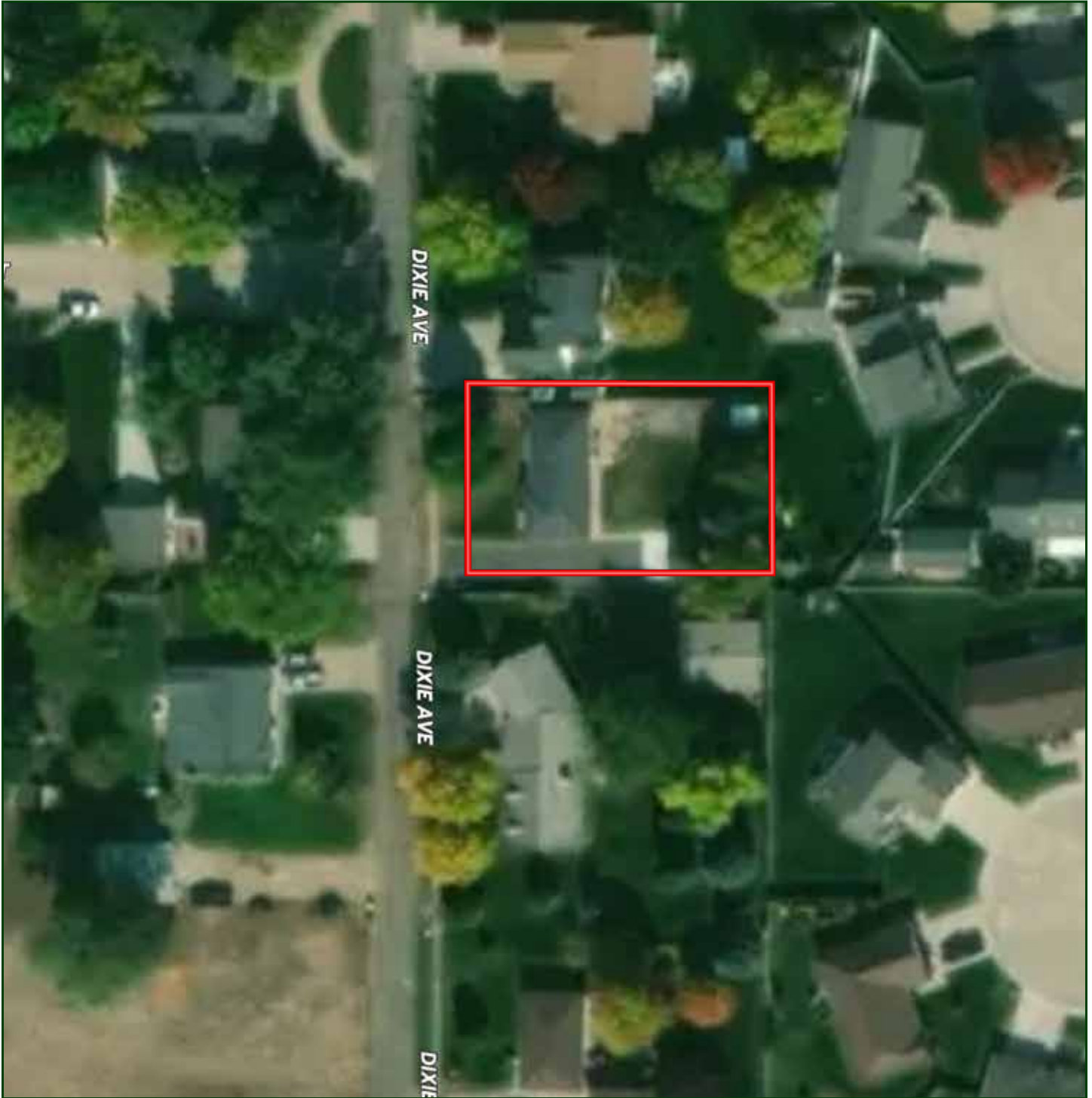
Email: tami@lashleyland.com

LOCATION MAP



Boundary lines are estimates - Map for illustration only

AERIAL MAP



Boundary lines are estimates - Map for illustration only

TAMI TIMMERMAN-LASHLEY

Residential Specialist

Tami's Cell: 308-660-9468

Email: tami@lashleyland.com

PROPERTY IMAGES



PROPERTY IMAGES



TAMI TIMMERMAN-LASHLEY

Residential Specialist

Tami's Cell: 308-660-9468

Email: tami@lashleyland.com

PROPERTY IMAGES





NEBRASKA EXPERTS, NATIONAL EXPOSURE.

Contact Information

Office: 308-532-9300

Fax: 308-532-1854

Email: info@lashleyland.com

Website: LashleyLand.com

Mike Lashley, Owner|Broker

Amy Lashley-Johnston, Scott Saults, Skip Marland, Jordan Maassen, April Good, Jon Farley, Tami Timmerman-Lashley, Randy Helms, Bill Grant, Shane Mauch, Jake McQuillen, Brandi Housman, Leala Jimerson, Stephanie Miller, DeAnn Vaughn, Ann Gray, Jake Hopwood, Bryan Cabrera, Lindsey Feuerborn, Robby Uehran, and Tom Moss

Like us on Facebook
[Facebook.com/LashleyLand](https://www.facebook.com/LashleyLand)

2218 E. Walker Road • North Platte, NE 69101



TAMI TIMMERMAN-LASHLEY

Residential Specialist

Tami's Cell: 308-660-9468

Email: tami@lashleyland.com