



**3116 W. D ST.
NORTH PLATTE, NE**



A 3 bedroom home with modern updates.

TAMI TIMMERMAN-LASHLEY

Residential Specialist

Tami's Cell: 308-660-9468

Email: tami@lashleyland.com

PROPERTY HIGHLIGHTS

List Price **\$255,000**

Location 3116 West D St., North Platte, NE

Legal Description

LOT 3, BLOCK 2, VALLEY VIEW THIRD ADDITION TO NORTH PLATTE, LINCOLN COUNTY, NEBRASKA.

Taxes - Estimated **\$3,196.75**

Property Summary

Welcome to your new home! This charming 3-bedroom, 2-bathroom residence offers an inviting semi-open floor plan with 1,400 square feet. Designed to maximize comfort and style, this home boasts abundant natural light and designer touches throughout. The guest bathroom is cozy with a new vanity. The primary bedroom has its own en-suite for getting ready in the morning.

As you step inside, you'll immediately notice consistent flooring that seamlessly ties the living spaces together. The two living areas provide plenty of space for relaxation and entertainment, with one featuring a cozy fireplace, perfect for those chilly evenings.

Enjoy cooking and conversation in the semi-open kitchen, which connects effortlessly to the dining area, making it ideal for gatherings with family and friends.

Step outside to the large, fenced-in backyard. It's a great area for both kids and pets, offering plenty of room to play. The three-seasons room is a fantastic spot to unwind with a book while keeping an eye on the outdoor fun. For those who love to entertain, the side patio is ready for your grill or fire pit – or both!

Need extra storage? The separate shed in the backyard is perfect for your garden tools or sports equipment. Parking is a breeze with the attached two-car garage.

The home is truly move-in ready, offering you peace of mind with its blend of modern updates and charm. Don't miss the opportunity to make this lovely house your new home. Schedule a tour today and imagine the possibilities!

All information is taken from the Lincoln County assessor's card and is not guaranteed or a warranty

All information herein is from sources deemed reliable, however the accuracy is not guaranteed by Lashley Land and Recreational Brokers, Inc., seller or agent. Offering is subject to error, omissions, prior sale, price change or withdrawal without notice.

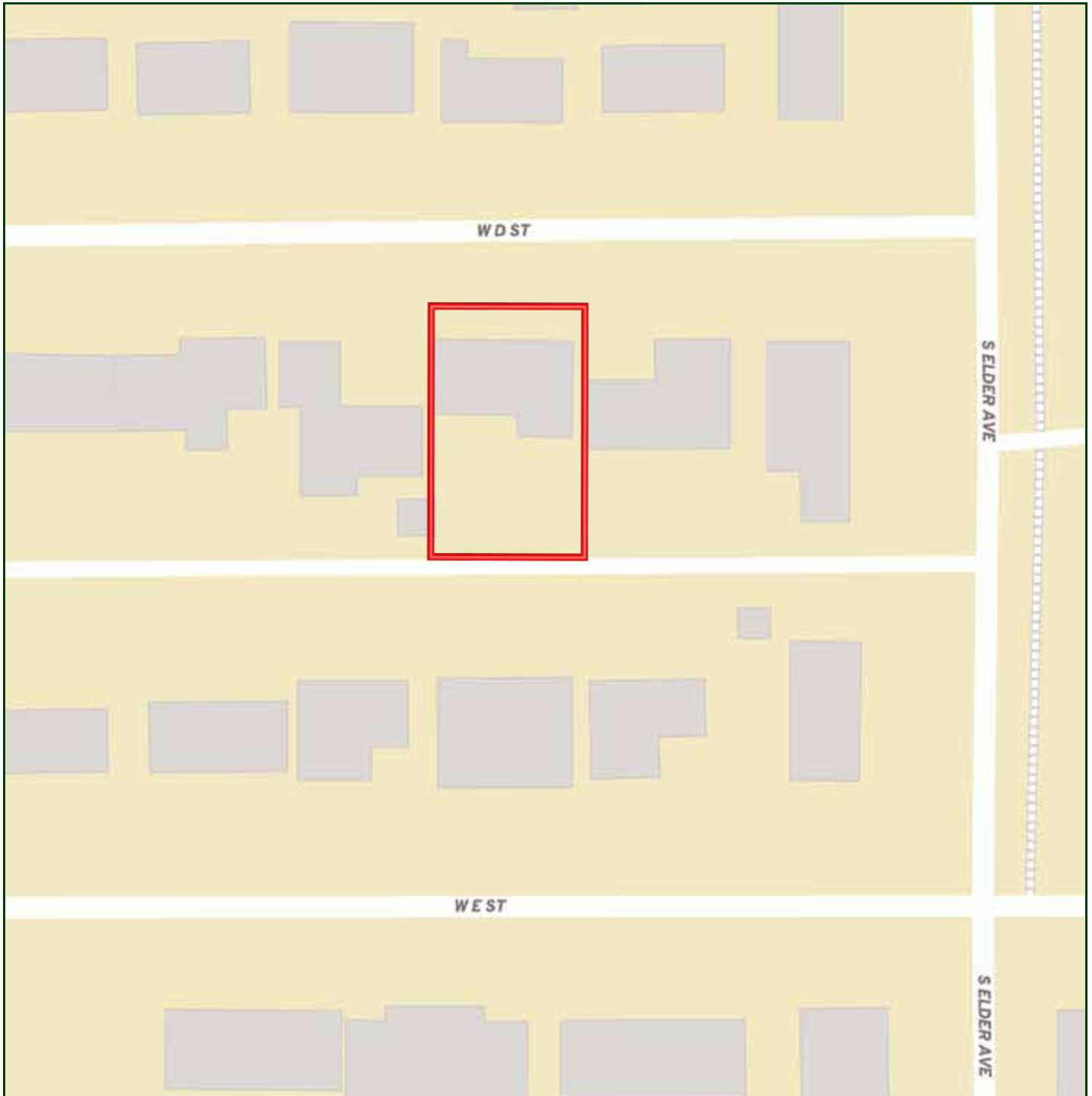
TAMI TIMMERMAN-LASHLEY

Residential Specialist

Tami's Cell: 308-660-9468

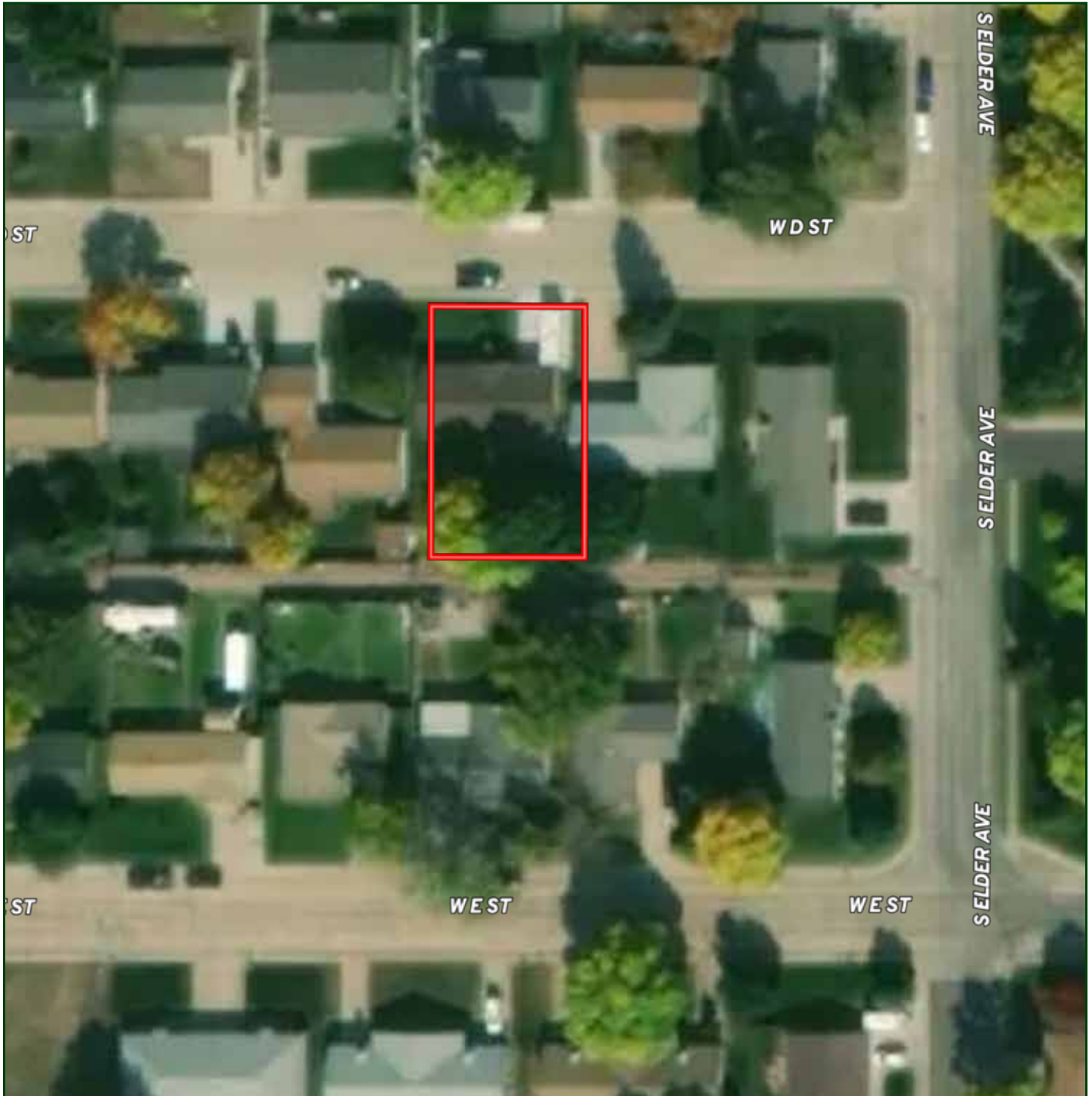
Email: tami@lashleyland.com

LOCATION MAP



Boundary lines are estimates - Map for illustration only

AERIAL MAP



Boundary lines are estimates - Map for illustration only

TAMI TIMMERMAN-LASHLEY

Residential Specialist

Tami's Cell: 308-660-9468

Email: tami@lashleyland.com

PROPERTY IMAGES



PROPERTY IMAGES



TAMI TIMMERMAN-LASHLEY

Residential Specialist

Tami's Cell: 308-660-9468

Email: tami@lashleyland.com

PROPERTY IMAGES





NEBRASKA EXPERTS, NATIONAL EXPOSURE.

Contact Information

Office: 308-532-9300

Fax: 308-532-1854

Email: info@lashleyland.com

Website: LashleyLand.com

Mike Lashley, Owner|Broker

Amy Lashley-Johnston, Scott Saults, Skip Marland, Jordan Maassen, April Good, Jon Farley, Tami Timmerman-Lashley, Randy Helms, Bill Grant, Shane Mauch, Jake McQuillen, Brandi Housman, Leala Jimerson, Stephanie Miller, DeAnn Vaughn, Ann Gray, Jake Hopwood, Bryan Cabrera, Lindsey Feuerborn, Robby Uehran, and Tom Moss

Like us on Facebook
[Facebook.com/LashleyLand](https://www.facebook.com/LashleyLand)

2218 E. Walker Road • North Platte, NE 69101



TAMI TIMMERMAN-LASHLEY

Residential Specialist

Tami's Cell: 308-660-9468

Email: tami@lashleyland.com