



2307 W. D
NORTH PLATTE, NE



A 3 bedroom home with an open floor plan and modern updates.

BRANDI HOUSMAN

Sales Associate

Brandi's Cell: 308-568-9435

Email: brandi@lashleyland.com

PROPERTY HIGHLIGHTS

List Price **\$200,000**

Location 2307 West D., North Platte, NE 69101

Legal Description

LOT 21, BLOCK 2, WESTFIELD 6TH ADDITION TO NORTH PLATTE, LINCOLN COUNTY, NEBRASKA

Taxes - Estimated **\$1,968.68**

Property Summary

Brand new white metal roof installed 2026. WELCOME HOME to this adorable 3 bedroom, 1.5 bathroom home with 1,272 sq ft that radiates character from the front steps to the modern updates made inside. This home features two living room spaces, the second space can be used as a multi-purpose room for kids, crafts, etc., which also leads to the backyard. A fireplace wall was built with rustic mantle and shelving for added character and an extra heat option for those cold winter nights. This home features an open floorplan living room, dining room and kitchen with large window for natural light. A sunshade was added over the large cement patio in the backyard and stays with the home. This home also features a covered carport to protect your vehicles and also has parking space for additional vehicles without having to park on the street. All newer appliances in the home stay for new owners as well as the mounted tv above the fireplace. Come see this beauty before it is gone!

All information herein is from sources deemed reliable, however the accuracy is not guaranteed by Lashley Land and Recreational Brokers, Inc., seller or agent. Offering is subject to error, omissions, prior sale, price change or withdrawal without notice.

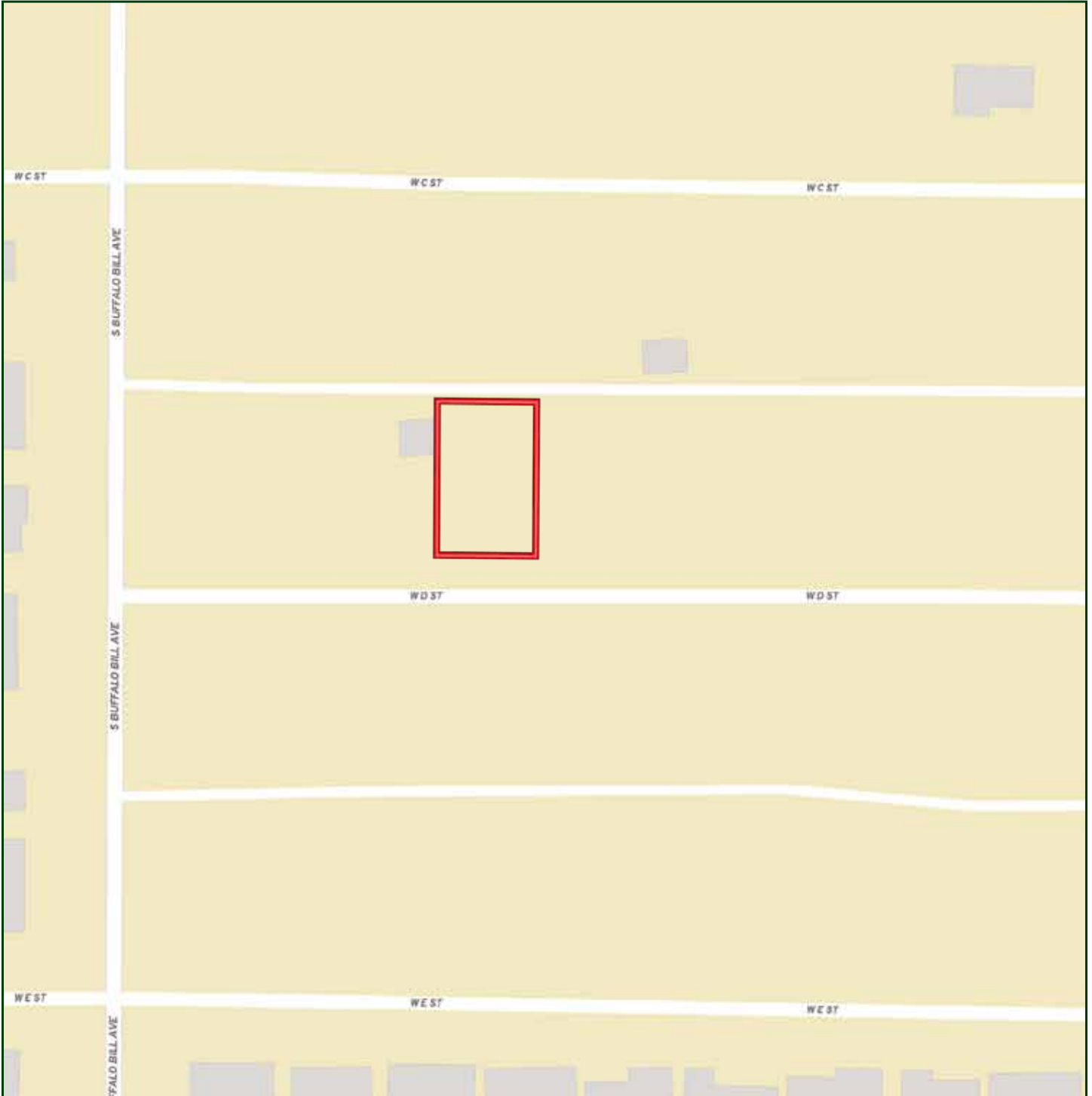
BRANDI HOUSMAN

Sales Associate

Brandi's Cell: 308-568-9435

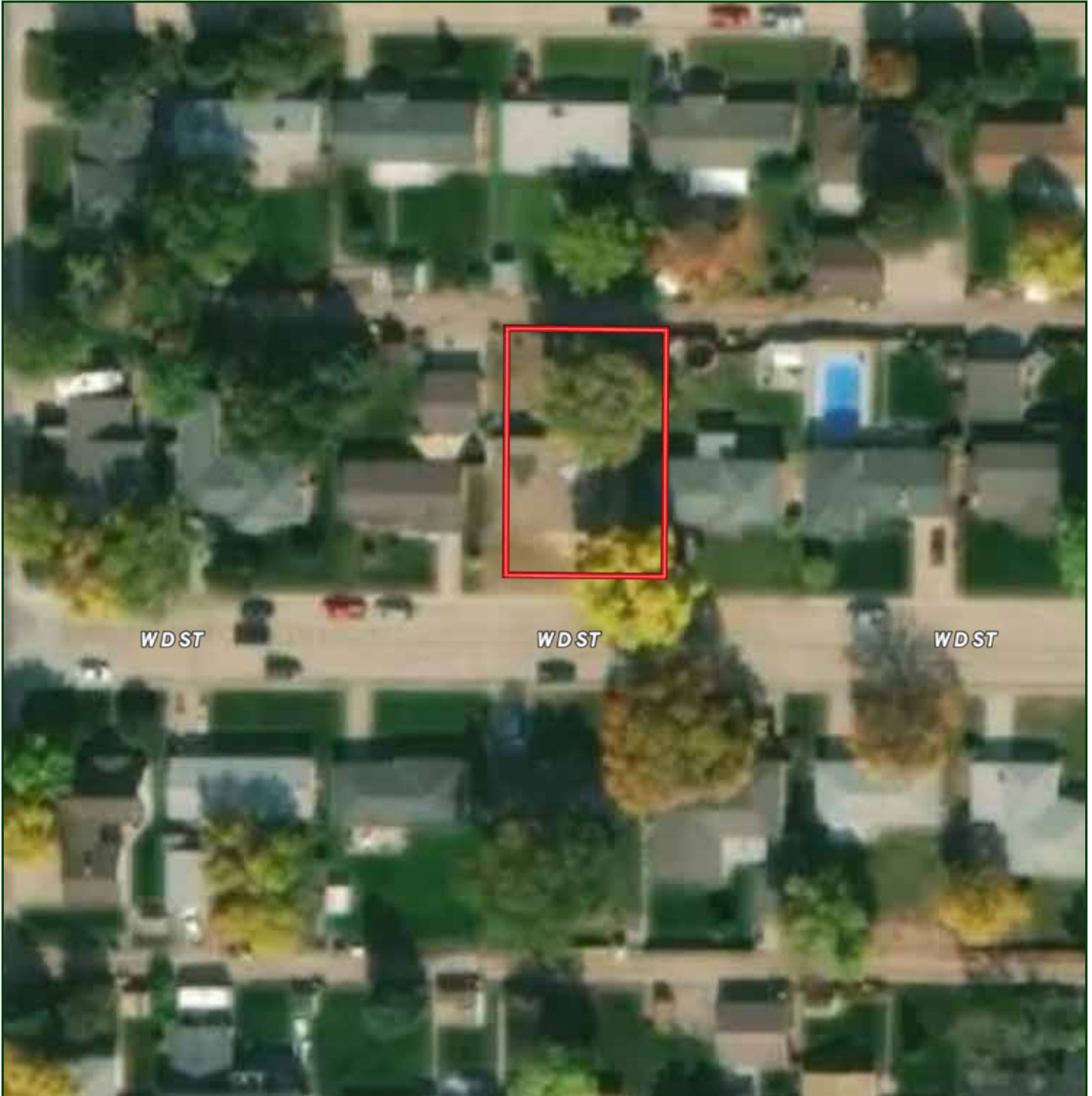
Email: brandi@lashleyland.com

LOCATION MAP



Boundary lines are estimates - Map for illustration only

AERIAL MAP



Boundary lines are estimates - Map for illustration only

BRANDI HOUSMAN

Sales Associate

Brandi's Cell: 308-568-9435

Email: brandi@lashleyland.com

PROPERTY IMAGES



PROPERTY IMAGES



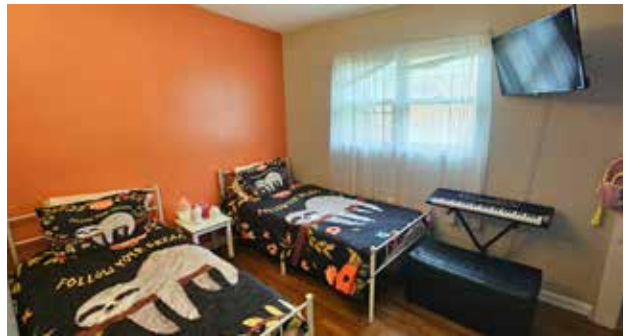
BRANDI HOUSMAN

Sales Associate

Brandi's Cell: 308-568-9435

Email: brandi@lashleyland.com

PROPERTY IMAGES





NEBRASKA EXPERTS, NATIONAL EXPOSURE.

Contact Information

Office: 308-532-9300

Fax: 308-532-1854

Email: info@lashleyland.com

Website: LashleyLand.com

Mike Lashley, Owner|Broker

Amy Lashley-Johnston, Scott Saults, Skip Marland, Jordan Maassen, April Good, Jon Farley, Tami Timmerman-Lashley, Randy Helms, Bill Grant, Shane Mauch, Jake McQuillen, Brandi Housman, Leala Jimerson, Stephanie Miller, DeAnn Vaughn, Ann Gray, Jake Hopwood, Bryan Cabrera, Lindsey Feuerborn, Robby Uehran, and Tom Moss

Like us on Facebook
[Facebook.com/LashleyLand](https://www.facebook.com/LashleyLand)

2218 E. Walker Road • North Platte, NE 69101



BRANDI HOUSMAN

Sales Associate

Brandi's Cell: 308-568-9435

Email: brandi@lashleyland.com