



**1801 W. 13TH ST.
NORTH PLATTE, NE**



An open-concept home with 3 bedrooms and 2 baths.

TAMI TIMMERMAN-LASHLEY

Residential Specialist

Tami's Cell: 308-660-9468

Email: tami@lashleyland.com

PROPERTY HIGHLIGHTS

List Price

~~\$245,000~~

\$240,000

Location

1801 W. 13th St., North Platte, NE 69101

Legal Description

LOT 2, HOUSMAN 1ST REPLAT, NORTH PLATTE, LINCOLN COUNTY, NEBRASKA.

Taxes - Estimated

\$2,511.56

Property Summary

Welcome to this charming 1,430 sq. ft. home, a perfect blend of comfort and modern style, built in 2017. Offering three spacious bedrooms and two well-appointed bathrooms, the home includes a primary bedroom with a private en suite for added convenience. The open floor plan allows seamless flow between the living, dining, and kitchen areas, ideal for entertaining or enjoying family time.

The property features nicely landscaped front and back yards, creating an inviting outdoor experience. Enjoy the patio just steps from the kitchen great for outdoor entertaining and grilling. Additional parking, fully rocked and spacious enough for large trucks or trailers, accommodates vehicle enthusiasts or those needing extra space.

For those who value detail, the one-car garage boasts a specially treated epoxy-polished floor, providing both practicality and a sleek, stylish finish for your storage or work area.

Please note: All information is taken from the Lincoln County assessor's card and is not a guarantee or warranty. This home combines functionality with sophistication, making it a must-see for anyone seeking a well-designed living environment. Don't miss the opportunity to make this delightful house your home!

Call for your private tour today!

All information herein is from sources deemed reliable, however the accuracy is not guaranteed by Lashley Land and Recreational Brokers, Inc., seller or agent. Offering is subject to error, omissions, prior sale, price change or withdrawal without notice.

TAMI TIMMERMAN-LASHLEY

Residential Specialist

Tami's Cell: 308-660-9468

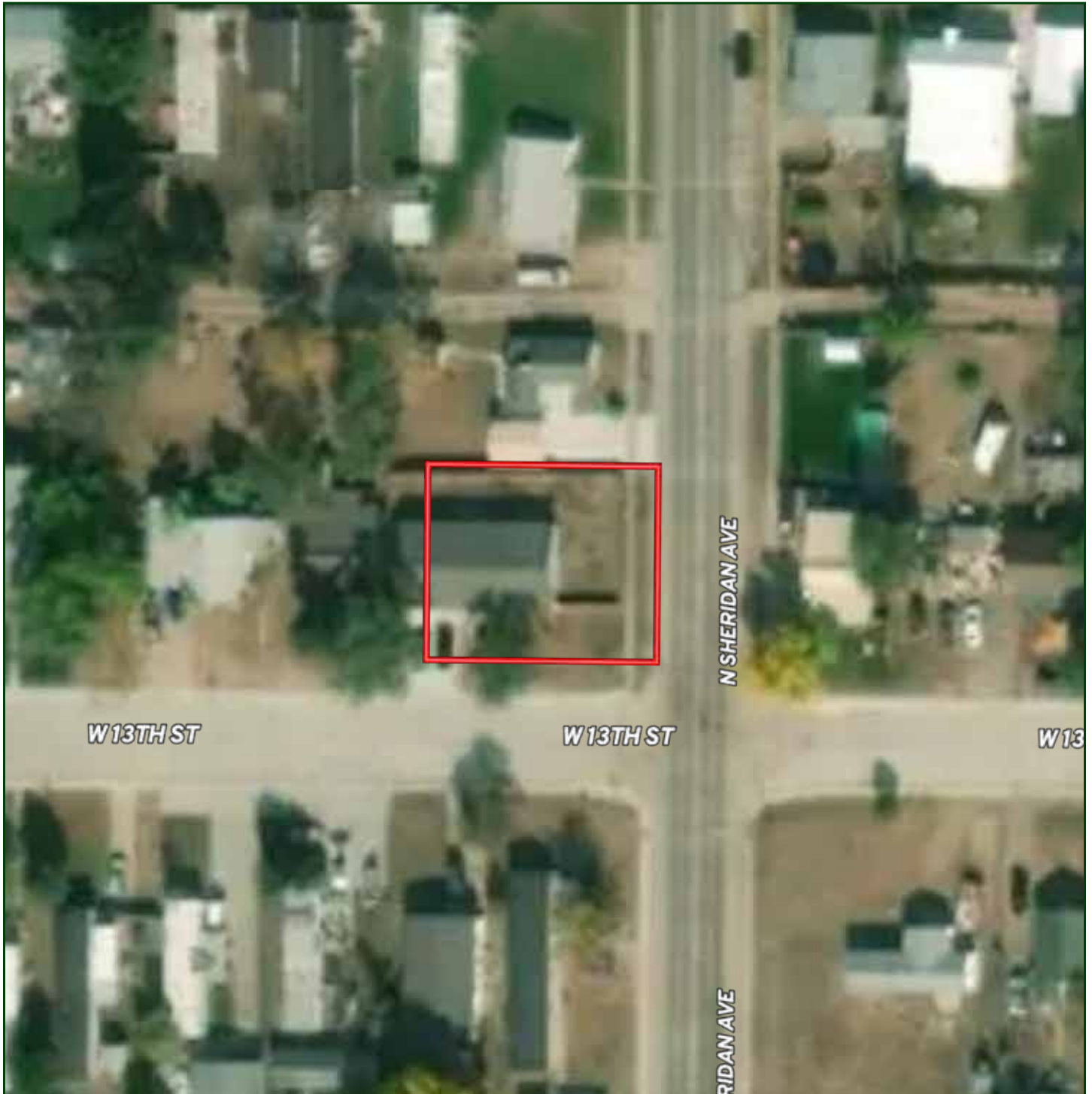
Email: tami@lashleyland.com

LOCATION MAP



Boundary lines are estimates - Map for illustration only

AERIAL MAP



Boundary lines are estimates - Map for illustration only

TAMI TIMMERMAN-LASHLEY

Residential Specialist

Tami's Cell: 308-660-9468

Email: tami@lashleyland.com

PROPERTY IMAGES



PROPERTY IMAGES



TAMI TIMMERMAN-LASHLEY

Residential Specialist

Tami's Cell: 308-660-9468

Email: tami@lashleyland.com

PROPERTY IMAGES





NEBRASKA EXPERTS, NATIONAL EXPOSURE.

Contact Information

Office: 308-532-9300

Fax: 308-532-1854

Email: info@lashleyland.com

Website: LashleyLand.com

Mike Lashley, Owner|Broker

Amy Lashley-Johnston, Scott Saults, Skip Marland, Jordan Maassen, April Good, Jon Farley, Tami Timmerman-Lashley, Randy Helms, Bill Grant, Shane Mauch, Jake McQuillen, Brandi Housman, Leala Jimerson, Stephanie Miller, DeAnn Vaughn, Ann Gray, Jake Hopwood, Bryan Cabrera, Lindsey Feuerborn, Robby Uehran, and Tom Moss

Like us on Facebook
[Facebook.com/LashleyLand](https://www.facebook.com/LashleyLand)

2218 E. Walker Road • North Platte, NE 69101



TAMI TIMMERMAN-LASHLEY

Residential Specialist

Tami's Cell: 308-660-9468

Email: tami@lashleyland.com