



105 EAST RODNEY WALLACE, NE



A beautifully updated home on 1.36± acres

SHANE MAUCH

Sales Associate

Shane's Cell: 308-660-5672

Email: shane@lashleyland.com

PROPERTY HIGHLIGHTS

List Price

\$450,000

Location

105 East Rodney, Wallace, NE 69169

Legal Description

O.T. 7-15 7 | O.T. 6 7 | O.T. 5 7 | O.T. 4 7 | O.T. 3 7 | O.T. 2 7 | O.T. 1 7

Acres

1.36±

Buyers and Sellers acknowledge all represented acres are based on the County Assessor's records. Buyers acknowledge that they are purchasing a legal description, and acknowledge that fences may or may not be on the property lines.

Taxes - Estimated

\$2,380.32

Property Summary

4 Bed | 4 Bath | 3,984 Sq Ft | 6 Vacant Lots Included

Discover small-town charm and spacious living in this beautifully renovated home located in the heart of Wallace, NE. Boasting nearly 4,000 sq ft of living space, this 4-bedroom, 4-bathroom home is thoughtfully updated with modern finishes and quality craftsmanship throughout.

Interior Highlights:

- Expansive Master Suite featuring a huge walk-in closet, a luxurious remodeled bathroom with a fireplace, and high-end finishes
- Gorgeous kitchen with adjoining dining area and living room - ideal for hosting or everyday living
- Large mudroom/utility room
- Fully finished basement includes a second living area, a workout room, and a full bathroom
- Updated electrical, 2 water heaters, and ample storage throughout the home

Recent Updates:

- All-new Pella windows, siding, and roof on both the house and garage
- Renovated interior with modern lighting, flooring, and fixtures

Garage & Extras:

- Detached 2-car garage - once the village's Catholic Church, now a unique and spacious garage
- Underground sprinklers and a beautifully maintained corner lot
- 6 vacant lots to the east of the property are included in the sale - perfect for future development, gardening, or expansion
- A large metal building to the north is negotiable

This is a rare opportunity to own a one-of-a-kind property with small-town appeal, luxurious upgrades, and room to grow. If you're looking for your forever home, this home is a must-see! Schedule your private tour today!

All information herein is from sources deemed reliable, however the accuracy is not guaranteed by Lashley Land and Recreational Brokers, Inc., seller or agent. Offering is subject to error, omissions, prior sale, price change or withdrawal without notice.

SHANE MAUCH

Sales Associate

Shane's Cell: 308-660-5672

Email: shane@lashleyland.com

LOCATION MAP



Boundary lines are estimates - Map for illustration only

AERIAL MAP



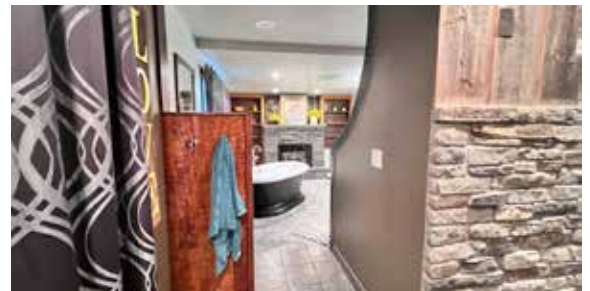
Boundary lines are estimates - Map for illustration only

SHANE MAUCH
Sales Associate
Shane's Cell: 308-660-5672
Email: shane@lashleyland.com

PROPERTY IMAGES

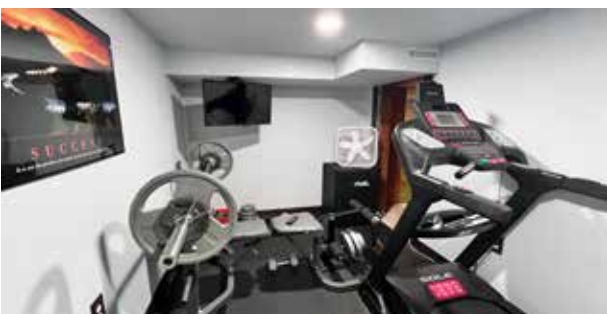


PROPERTY IMAGES



SHANE MAUCH
Sales Associate
Shane's Cell: 308-660-5672
Email: shane@lashleyland.com

PROPERTY IMAGES





NEBRASKA EXPERTS, NATIONAL EXPOSURE.

Contact Information

Office: 308-532-9300

Fax: 308-532-1854

Email: info@lashleyland.com

Website: LashleyLand.com

Mike Lashley, Owner|Broker

Amy Lashley-Johnston, Scott Saults, Skip Marland, Jordan Maassen, April Good, Jon Farley, Tami Timmerman-Lashley, Randy Helms, Bill Grant, Shane Mauch, Jake McQuillen, Brandi Housman, Leala Jimerson, Stephanie Miller, DeAnn Vaughn, Ann Gray, Jake Hopwood, Bryan Cabrera, Lindsey Feuerborn, Robby Uehran, and Tom Moss

Like us on Facebook
[Facebook.com/LashleyLand](https://www.facebook.com/LashleyLand)

2218 E. Walker Road • North Platte, NE 69101



SHANE MAUCH

Sales Associate

Shane's Cell: 308-660-5672

Email: shane@lashleyland.com