



**613 SHERIDAN AVE.
NORTH PLATTE, NE**



A 2 bedroom home with over 700 sqft.

TAMI TIMMERMAN-LASHLEY

Residential Specialist

Tami's Cell: 308-660-9468

Email: tami@lashleyland.com

PROPERTY HIGHLIGHTS

List Price

~~\$140,000~~

\$130,000

Location

613 Sheridan Ave., North Platte, NE 69101

Legal Description

Lot 6, Block 1, Cody Addition, North Platte, Lincoln County, Nebraska.

Taxes - Estimated

\$856.54

Property Summary

This nice 2-bedroom, 1-bath home has over 700 square feet of open living space, featuring new flooring and fresh paint both inside and out. Lots of Natural light pours in through newer windows, creating an inviting atmosphere. Enjoy the privacy of a newly fenced backyard and the convenience of a new gravel driveway. Located close to the Westfield shopping center, this property offers excellent investment potential. Please note, all information is sourced from the Lincoln County assessor card and is not guaranteed or warranted; the property is sold "as is, where is."

All information herein is from sources deemed reliable, however the accuracy is not guaranteed by Lashley Land and Recreational Brokers, Inc., seller or agent. Offering is subject to error, omissions, prior sale, price change or withdrawal without notice.

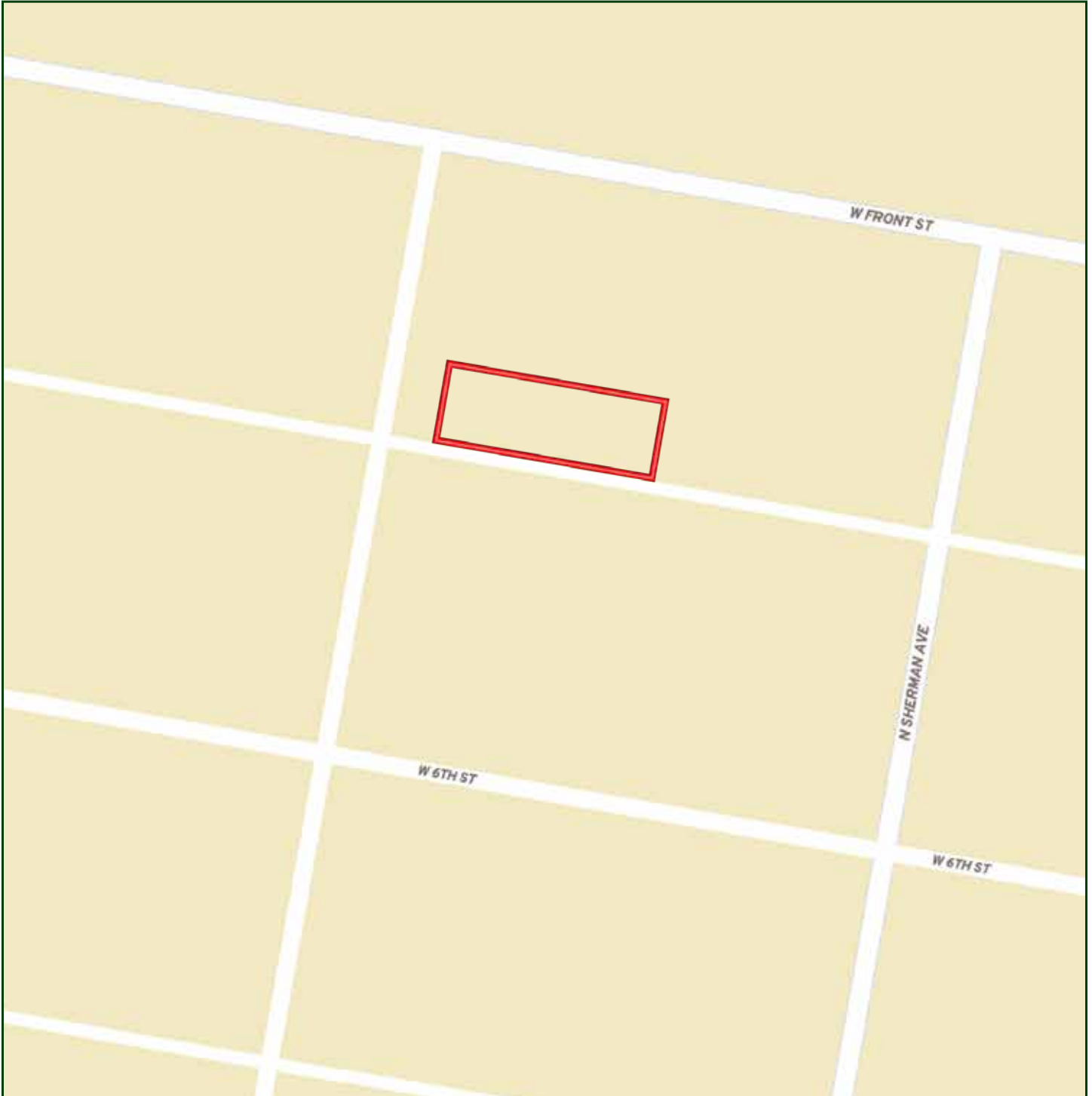
TAMI TIMMERMAN-LASHLEY

Residential Specialist

Tami's Cell: 308-660-9468

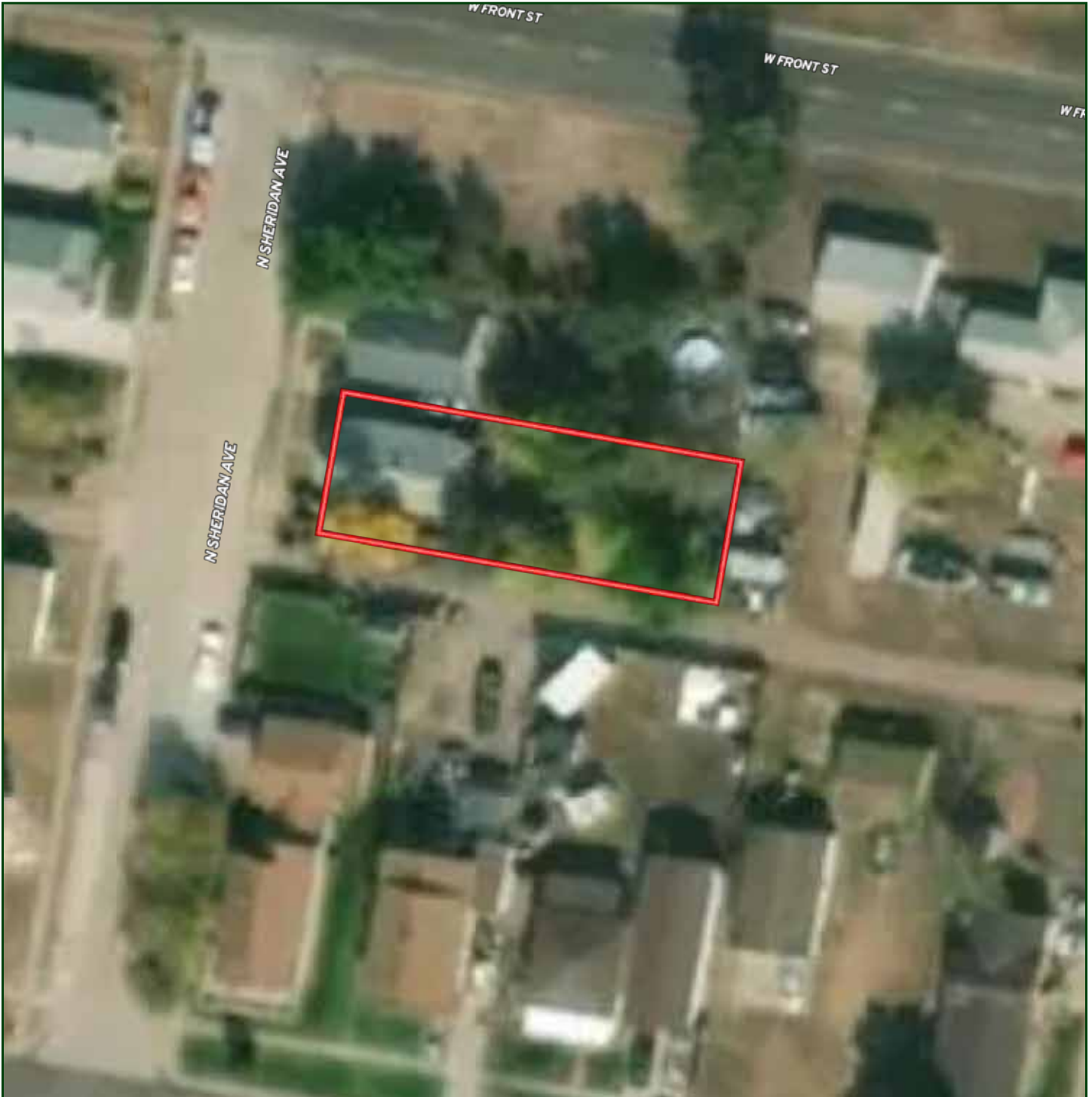
Email: tami@lashleyland.com

LOCATION MAP



Boundary lines are estimates - Map for illustration only

AERIAL MAP



Boundary lines are estimates - Map for illustration only

TAMI TIMMERMAN-LASHLEY

Residential Specialist

Tami's Cell: 308-660-9468

Email: tami@lashleyland.com

PROPERTY IMAGES



PROPERTY IMAGES



TAMI TIMMERMAN-LASHLEY

Residential Specialist

Tami's Cell: 308-660-9468

Email: tami@lashleyland.com

PROPERTY IMAGES





NEBRASKA EXPERTS, NATIONAL EXPOSURE.

Contact Information

Office: 308-532-9300

Fax: 308-532-1854

Email: info@lashleyland.com

Website: LashleyLand.com

Mike Lashley, Owner|Broker

Amy Lashley-Johnston, Scott Saults, Skip Marland, Jordan Maassen, April Good, Jon Farley, Tami Timmerman-Lashley, Randy Helms, Bill Grant, Shane Mauch, Jake McQuillen, Brandi Housman, Leala Jimerson, Stephanie Miller, DeAnn Vaughn, Ann Gray, Jake Hopwood, Bryan Cabrera, Lindsey Feuerborn, Robby Uehran, and Tom Moss

Like us on Facebook
[Facebook.com/LashleyLand](https://www.facebook.com/LashleyLand)

2218 E. Walker Road • North Platte, NE 69101



TAMI TIMMERMAN-LASHLEY

Residential Specialist

Tami's Cell: 308-660-9468

Email: tami@lashleyland.com