



6 REIMERS RD. OGALLALA, NE



10± acres located just minutes from Ogallala, NE.

SHANE MAUCH

Sales Associate

Shane's Cell: 308-660-5672

Email: shane@lashleyland.com

PROPERTY HIGHLIGHTS

List Price	\$125,000
Location	6 Reimers Rd., Ogallala, NE 69153
Legal Description	LOT 6 REIMERS SUB 10.01A. 1A-O---16 STR(27 14 38)

Acres 10.01±

Buyers and Sellers acknowledge all represented acres are based on the County Assessor's records. Buyers acknowledge that they are purchasing a legal description, and acknowledge that fences may or may not be on the property lines.

Taxes - Estimated **\$329.30**

Property Summary

Build Your Dream Home on 10+ Acres Near Lake McConaughy!

Looking for the perfect place to build your next home? Look no further! This 10.01± acre parcel offers plenty of space, and electricity is readily available. Making it easy to get started on your dream build.

Conveniently located just minutes from Ogallala and close to the beautiful Lake McConaughy, you'll enjoy both the peace of country living and the benefits of nearby town amenities.

Ogallala is growing - don't miss your chance to invest in this incredible opportunity!

All information herein is from sources deemed reliable, however the accuracy is not guaranteed by Lashley Land and Recreational Brokers, Inc., seller or agent. Offering is subject to error, omissions, prior sale, price change or withdrawal without notice.

SHANE MAUCH
Sales Associate
Shane's Cell: 308-660-5672
Email: shane@lashleyland.com

LOCATION MAP



Boundary lines are estimates - Map for illustration only

AERIAL MAP



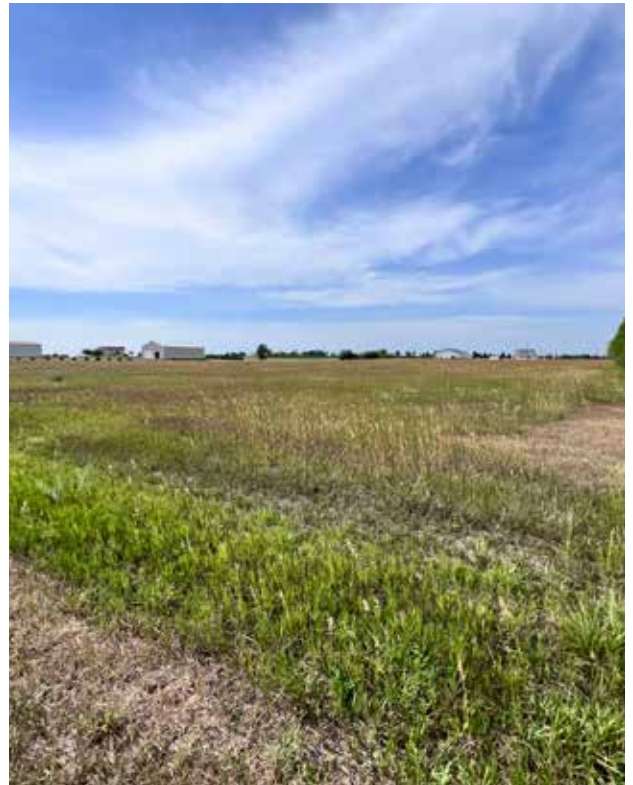
Boundary lines are estimates - Map for illustration only

SHANE MAUCH
Sales Associate
Shane's Cell: 308-660-5672
Email: shane@lashleyland.com

PROPERTY IMAGES



PROPERTY IMAGES



SHANE MAUCH
Sales Associate
Shane's Cell: 308-660-5672
Email: shane@lashleyland.com

PROPERTY IMAGES





NEBRASKA EXPERTS, NATIONAL EXPOSURE.

Contact Information

Office: 308-532-9300

Fax: 308-532-1854

Email: info@lashleyland.com

Website: LashleyLand.com

Mike Lashley, Owner|Broker

Amy Lashley-Johnston, Scott Saults, Skip Marland, Jordan Maassen, April Good, Jon Farley, Tami Timmerman-Lashley, Randy Helms, Bill Grant, Shane Mauch, Jake McQuillen, Brandi Housman, Leala Jimerson, Stephanie Miller, DeAnn Vaughn, Ann Gray, Jake Hopwood, Bryan Cabrera, Lindsey Feuerborn, Robby Uehran, and Tom Moss

Like us on Facebook
[Facebook.com/LashleyLand](https://www.facebook.com/LashleyLand)

2218 E. Walker Road • North Platte, NE 69101



SHANE MAUCH

Sales Associate

Shane's Cell: 308-660-5672

Email: shane@lashleyland.com