



## 110 N. MAPLE NORTH PLATTE, NE



A move-in ready brick home with updates.

SHANE MAUCH

Sales Associate

Shane's Cell: 308-660-5672

Email: [shane@lashleyland.com](mailto:shane@lashleyland.com)

# PROPERTY HIGHLIGHTS

<b>List Price</b>	<b>\$225,000</b>
<b>Location</b>	110 N Maple St., North Platte, NE 69101
<b>Legal Description</b>	O.T. N 1/2 7 & 8 181
<b>Taxes - Estimated</b>	<b>\$2,002.58</b>

## Property Summary

110 N Maple St. - Move-In Ready Brick Home with Modern Updates!

Don't miss this high-efficiency, all-brick home featuring 3 bedrooms (including 1 non-conforming), 2 full bathrooms, and a 2-car detached garage. Inside, you'll find fresh paint throughout, new carpet in the bedrooms, and new flooring in the kitchen and basement, giving the entire home a clean, updated feel. A brand new roof (2024) and new sewer line (2025) add to the peace of mind.

Enjoy ample storage space, a fully fenced backyard perfect for pets or entertaining, and a location just minutes from Washington School and North Platte High School- ideal for families or those seeking convenience.

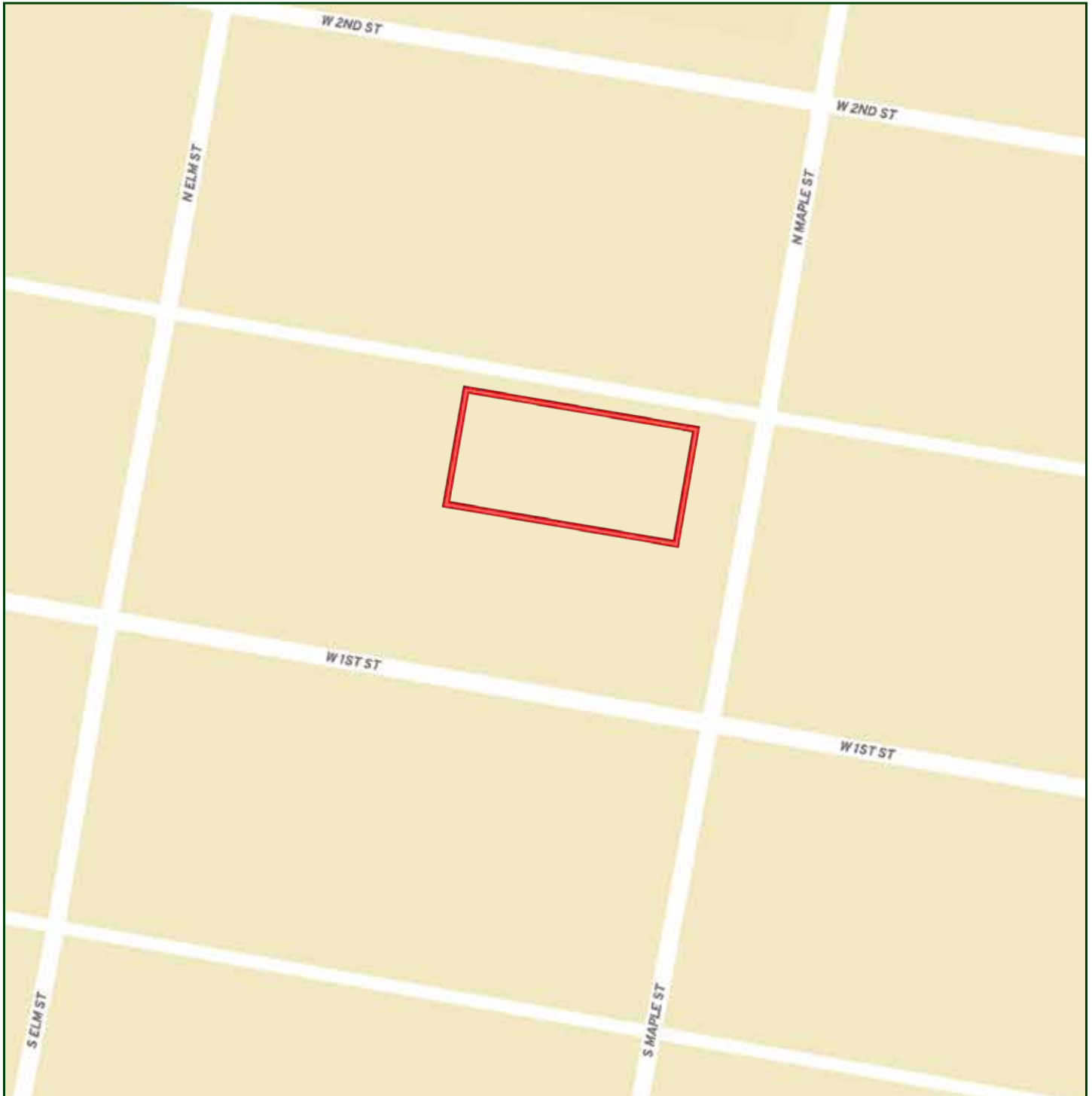
This is an incredible opportunity to own a move-in-ready home with major updates already completed.

Call today to schedule your private showing!

All information herein is from sources deemed reliable, however the accuracy is not guaranteed by Lashley Land and Recreational Brokers, Inc., seller or agent. Offering is subject to error, omissions, prior sale, price change or withdrawal without notice.

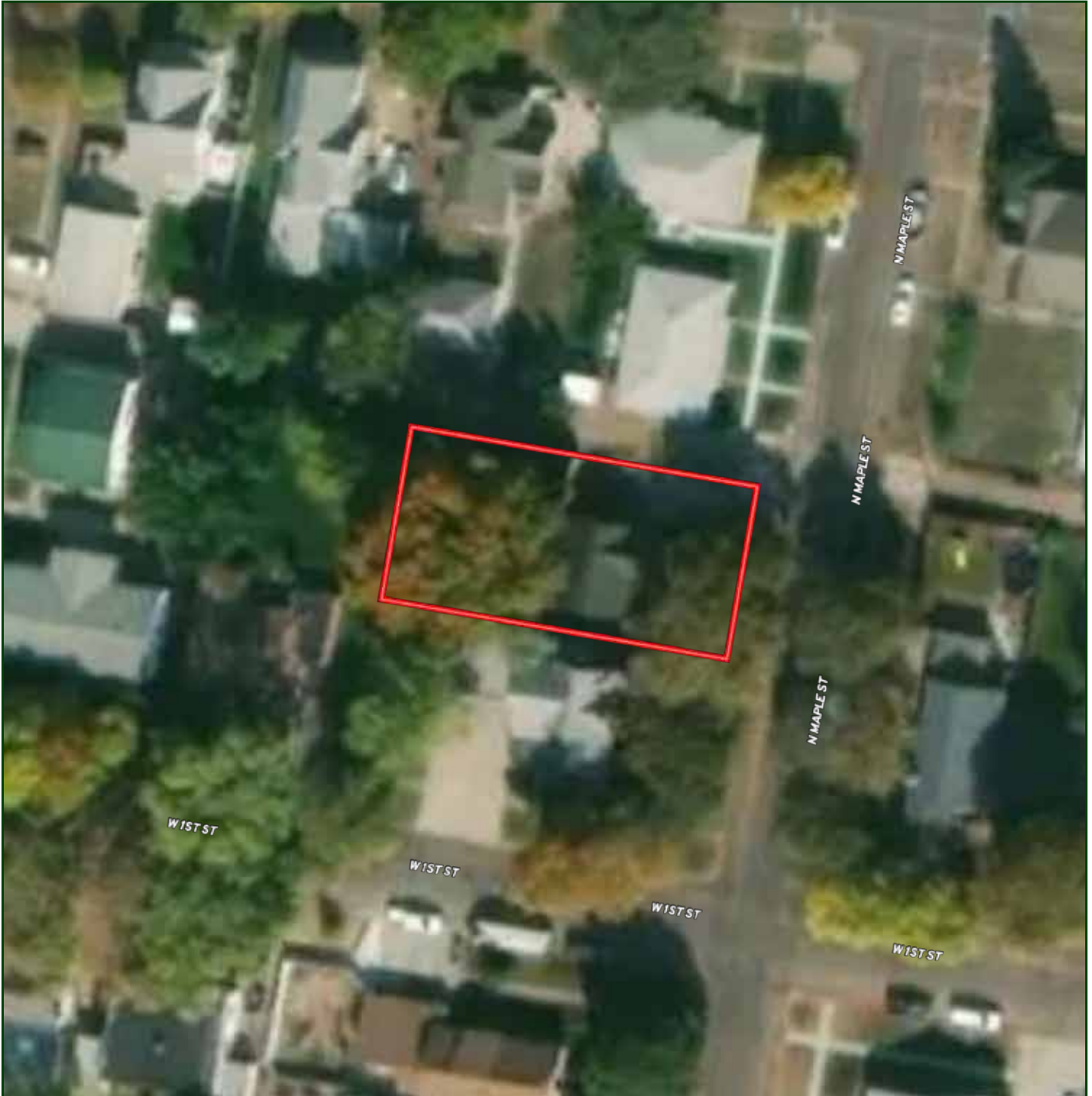
**SHANE MAUCH**  
Sales Associate  
Shane's Cell: 308-660-5672  
Email: [shane@lashleyland.com](mailto:shane@lashleyland.com)

# LOCATION MAP



Boundary lines are estimates - Map for illustration only

# AERIAL MAP



Boundary lines are estimates - Map for illustration only

SHANE MAUCH  
Sales Associate  
Shane's Cell: 308-660-5672  
Email: [shane@lashleyland.com](mailto:shane@lashleyland.com)

# PROPERTY IMAGES



# PROPERTY IMAGES



SHANE MAUCH  
Sales Associate  
Shane's Cell: 308-660-5672  
Email: [shane@lashleyland.com](mailto:shane@lashleyland.com)

# PROPERTY IMAGES





## NEBRASKA EXPERTS, NATIONAL EXPOSURE.

### Contact Information

Office: 308-532-9300

Fax: 308-532-1854

Email: [info@lashleyland.com](mailto:info@lashleyland.com)

Website: [LashleyLand.com](http://LashleyLand.com)

### Mike Lashley, Owner|Broker

Amy Lashley-Johnston, Scott Saults, Skip Marland, Jordan Maassen, April Good, Jon Farley, Tami Timmerman-Lashley, Randy Helms, Bill Grant, Shane Mauch, Jake McQuillen, Brandi Housman, Leala Jimerson, Stephanie Miller, DeAnn Vaughn, Ann Gray, Jake Hopwood, Bryan Cabrera, Lindsey Feuerborn, Robby Uehran, and Tom Moss

Like us on Facebook  
[Facebook.com/LashleyLand](https://www.facebook.com/LashleyLand)

2218 E. Walker Road • North Platte, NE 69101



## SHANE MAUCH

Sales Associate

Shane's Cell: 308-660-5672

Email: [shane@lashleyland.com](mailto:shane@lashleyland.com)